

Emergency Escape Plan

Emergency Phone Numbers

Emergency: 911

Poison Control: 1-800-222-1222

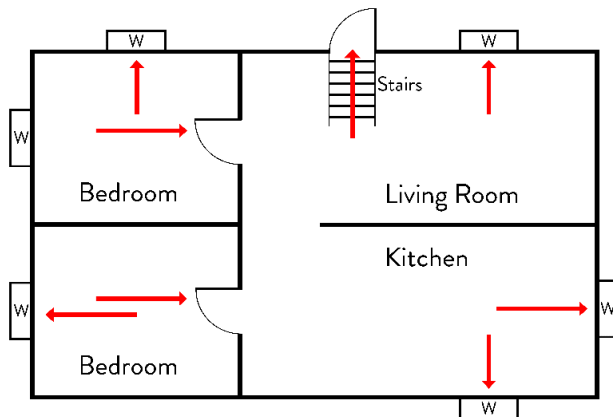
Non-emergency: _____

Police Department: _____

Fire Department: _____

Instructions

- Use the grid, blank paper, or other resources to draw a floor plan of each floor of your home on the next page.
- Each room will need two exits identified. Use arrows to show both of the emergency evacuation routes.
- In a building with three or more dwelling units, indicate enclosed exit stairs.
- Make sure the plan is clear and easy to follow.



Emergency Escape Plan

Site Information

Name: _____

Designated place to meet outside to determine if anyone is missing:

Designated place to meet during a storm or tornado:

Designated temporary shelter if needed:

Fire extinguisher locations: _____

Smoke detector locations

- Basement/Lower Level: _____
- Main/Upper Level: _____
- Second Floor: _____

CFC ONLY: If a child placed in my home is at risk of starting fires I/we will comply with the following:

- Lock/remove all fire starting objects
- Discuss with the case manager a supervision plan
- Other: _____

Initials

By initialing here I/we agree to the above plan: _____

EMERGENCY ESCAPE PLAN

