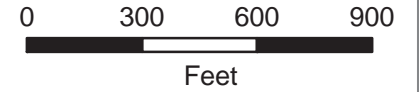


Robert Ney Memorial Park Reserve (East Unit)



Parking Lot



Bridge



Water



Hardwood Seeding



Prairie Restoration



Wetland



Park Boundary



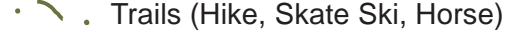
Private Property



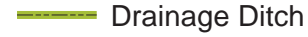
State Land



Roads



Trails (Hike, Skate Ski, Horse)

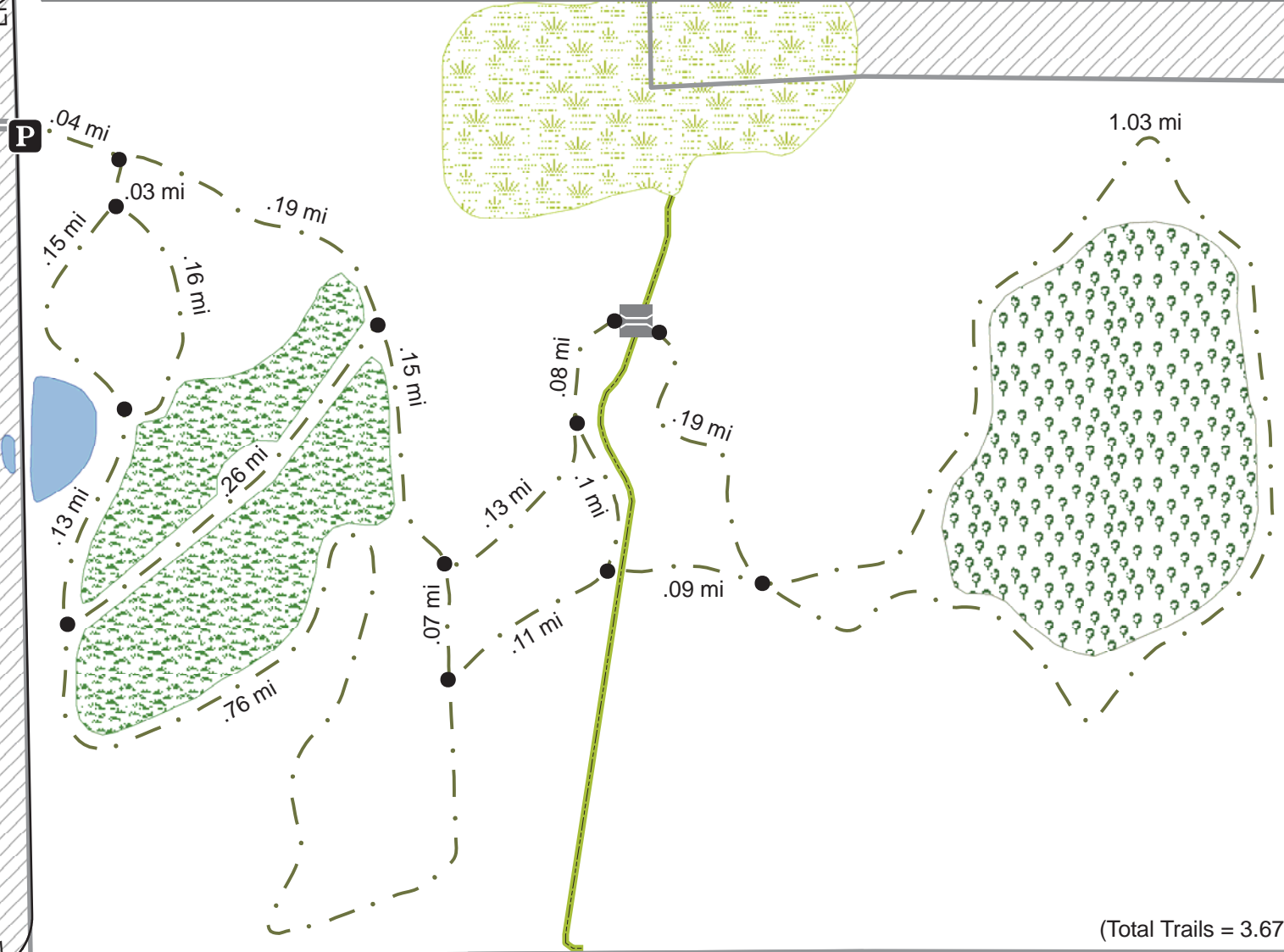


Drainage Ditch



Wright County GIS
Office of the County Surveyor
June 15, 2009

ENDICOTT AVE NW



(Total Trails = 3.67)

To Robert Ney Memorial Park Reserve (West Unit) .25 mi

73RD ST NW
To CSAH 8