

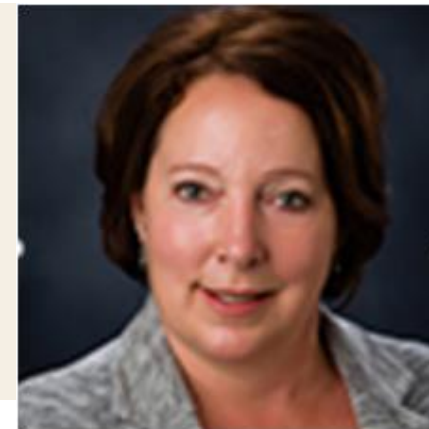
# Health and Human Services

Our Mission is to  
strengthen,  
support and  
serve our community

## **Financial Services**

Financial Assistance

Child Support

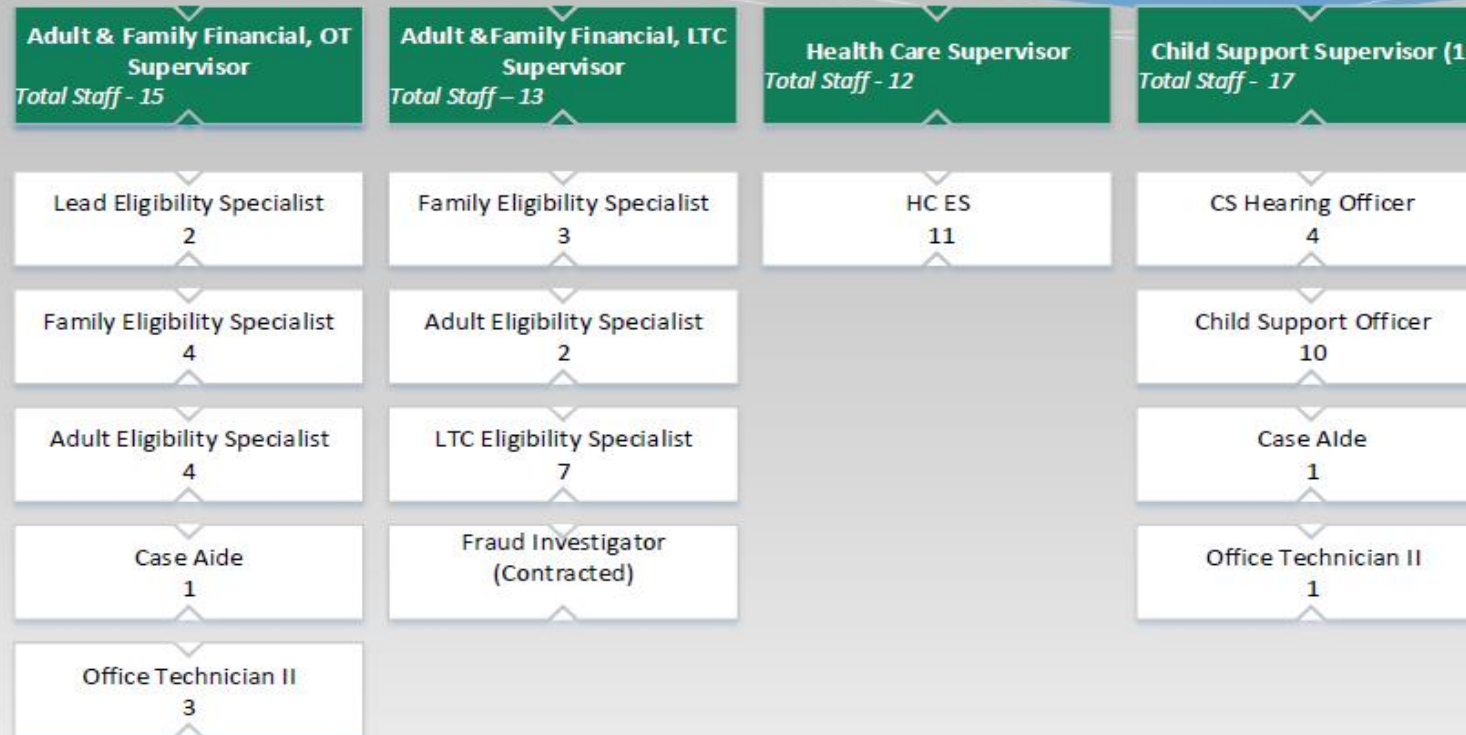


**Financial Services**

**Financial Services Manager**  
Total Staff – 58F



Total Employees – 58(Full Time)



- Lead Eligibility Specialist- 2
- Eligibility Specialist – 31
- Child Support Officer – 10
- Child Support Hearing Officer - 4
- Case aide – 2
- Office Tech II – 4
- Supervisor – 4
- Manager - 1



# Budget

- Income Maintenance Random Moment Study (IMRMS)
- Pass through dollars from the federal and state government
- Reimbursement in financial assistance is approximately 50% and child support reimbursement is approximately 66%.

***Thank you***

---