

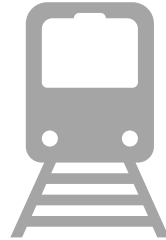


A Transportation Solution

What have we done!



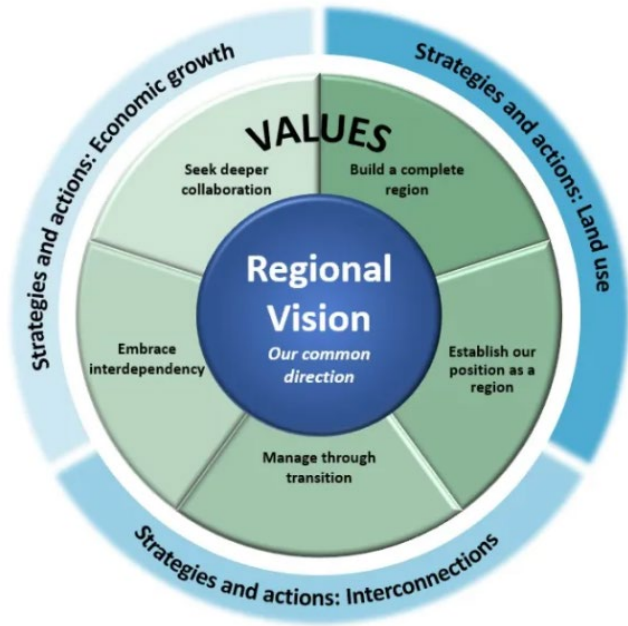
Created a planning document that recognizes data from the surround region. This planning document is known as Framework 2030.



Mapped out a plan to move forward with finding a transportation solution for the Hwy 25 corridor.

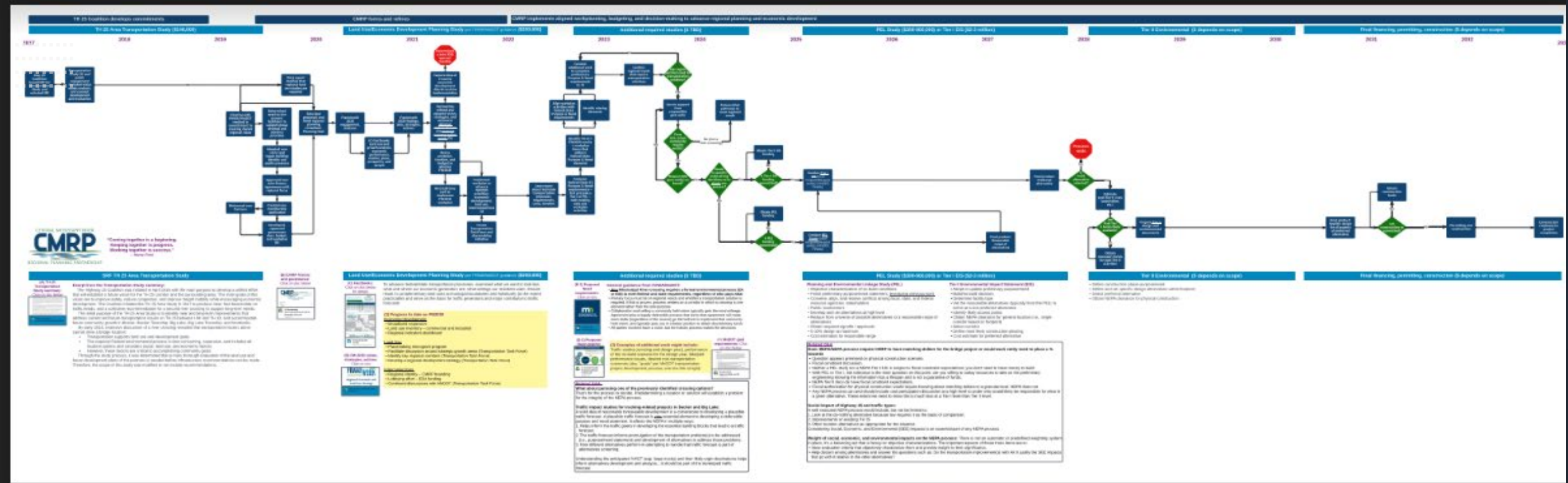


Recognized and research other areas of possible collaboration for future benefit.



FRAMEWORK ²⁰³⁰

partnering for the future



The Route Ahead

PEL Study (\$300-900,000) or Tier I EIS (\$2-3 million)

Planning and Environmental Linkage Study (PEL)

- Objective characterization of no-build conditions
- Finish preliminary purpose/need statement, leveraging previous work
- Convene, align, and resolve conflicts among local, state, and federal resource agencies, stakeholders
- Public involvement
- Develop and vet alternatives at high level
- Reduce from universe of possible alternatives to a reasonable range of alternatives
- Obtain required signoffs / approvals
- 5-10% design at maximum
- Cost estimates for reasonable range

Tier I Environmental Impact Statement (EIS)

- Adopt or update preliminary purpose/need
- Build/no build decision
- Determine facility type
- Vet the reasonable alternatives (typically from the PEL) to arrive at a one preferred alternative
- Identify likely access points
- Obtain NEPA clearance for general location (i.e., single corridor based on footprint)
- Select corridor
- Define most likely construction phasing
- Cost estimate for preferred alternative

Current Status

RFP is being solicited at this time for the Purpose and Needs Documents.

JPA is being formed at this time between Sherburne and Wright County as they are the LGU (Local Government Units)

The LGU will enter into the PEL (Planning and Environmental Linkage Study) process.