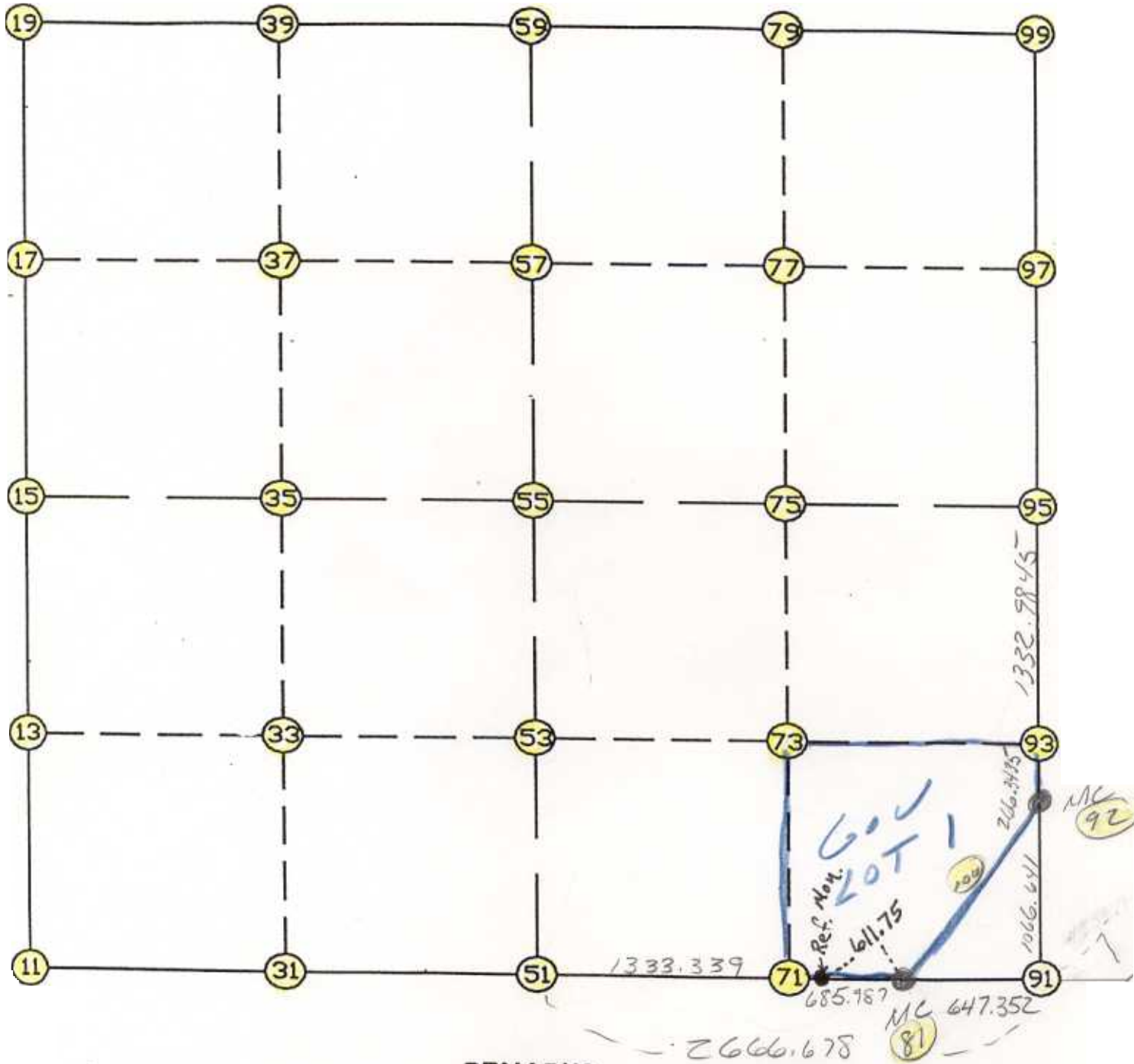


WRIGHT COUNTY SURVEYORS OFFICE

Public Works Building

Buffalo, Minn. 55313

SECTION 35 TOWNSHIP 122 RANGE 27



REMARKS

SE COR POSITIONED E-W - SINGLE PROPORTION -
SR COR SEC 36 TO S1/4 SEC 35

THE INFORMATION SHOWN HEREON IS A COMPILATION OF WRIGHT COUNTY RECORDS AND IS INTENDED TO BE USED FOR COMPARISON PURPOSES ONLY. THE COUNTY IS NOT RESPONSIBLE FOR ANY INACCURACIES HEREIN CONTAINED.

FROM TYPE	BEARING	DISTANCE	TO	NORTHING	EASTING
-----------	---------	----------	----	----------	---------

LIST POINTS

POINT	NORTHING	EASTING	ELEVATION	DESCR
5	9.000000	0.000000		
11	226981.966083	455734.487404		
13	228304.787316	455701.460814		
15	229627.608549	455668.434224		
17	230950.429687	455635.403810		
19	232273.250825	455602.373395		
31	227017.347142	457057.525633		
33	228332.491019	457038.068958		
35	229647.634896	457018.612283		
37	230954.164975	456999.192478		
39	232260.695053	456979.772673		
51	227052.728201	458380.563862		
53	228360.194722	458374.677102		
55	229667.661244	458368.790342		
57	230957.900263	458362.981147		
59	232248.139282	458357.171952		
71	227050.053018	459713.900555		
73	228367.196608	459706.256206		
75	229687.385393	459698.594185		
77	230989.957666	459703.699674		
79	232292.529939	459708.805163		
81	227048.676669	460399.886174		
90	226989.743070	465640.222403		
91	227041.396913	461047.197241		
92	228107.787425	461024.073264		
93	228374.129915	461024.793487		
95	229707.109542	461028.398028		
97	231022.015069	461044.418201		
99	232336.920596	461060.438375		
100	227693.013432	460735.265394		

START				11	226981.966	455734.487
11	INV N	1-25-48.7 W	2646.467	15	229627.609	455668.434
15	INV N	1-25-49.3 W	2646.467	19	232273.251	455602.373
19	INV S	89-28-39.8 E	2754.913	59	232248.139	458357.172
59	INV N	88-07-08.2 E	2704.724	99	232336.921	461060.438
99	INV S	0-41-52.9 W	2630.006	95	229707.110	461028.398
95	INV S	0-09-17.8 W	1599.328	92	228107.787	461024.073
92	INV S	1-14-32.0 E	1066.641	91	227041.397	461047.197
91	INV N	89-21-20.4 W	647.352	81	227048.677	460399.886
81	INV N	89-53-06.2 W	2019.326	51	227052.728	458380.564
51	INV S	88-28-05.3 W	2647.022	11	226981.966	455734.487
START				51	227052.728	458380.564
51	INV N	0-15-28.7 W	2614.960	55	229667.661	458368.790
55	INV N	0-15-28.7 W	2580.504	59	232248.139	458357.172
START				15	229627.609	455668.434
15	INV N	89-09-00.8 E	2700.653	55	229667.661	458368.790
55	INV N	89-09-00.8 E	2659.900	95	229707.110	461028.398

POINT-POINT ANGLES

ANGLE	51 -	11 -	15:	C.W.	270-06-06.0	C.C.W.	89-53-54.0	2646.467
ANGLE	11 -	15 -	19:	C.W.	179-59-59.4	C.C.W.	180-00-00.6	2646.467
ANGLE	15 -	19 -	59:	C.W.	271-57-09.5	C.C.W.	88-02-50.5	2754.913
ANGLE	19 -	59 -	99:	C.W.	177-35-48.1	C.C.W.	182-24-11.9	2704.724
ANGLE	59 -	99 -	95:	C.W.	272-34-44.7	C.C.W.	87-25-15.3	2630.006
ANGLE	99 -	95 -	92:	C.W.	179-27-24.9	C.C.W.	180-32-35.1	1599.328
ANGLE	95 -	92 -	91:	C.W.	178-36-10.2	C.C.W.	181-23-49.8	1066.641
ANGLE	92 -	91 -	81:	C.W.	271-53-11.6	C.C.W.	88-06-48.4	647.352
ANGLE	91 -	81 -	51:	C.W.	179-28-14.3	C.C.W.	180-31-45.7	2019.326
ANGLE	81 -	51 -	11:	C.W.	178-21-11.5	C.C.W.	181-38-48.5	2647.022