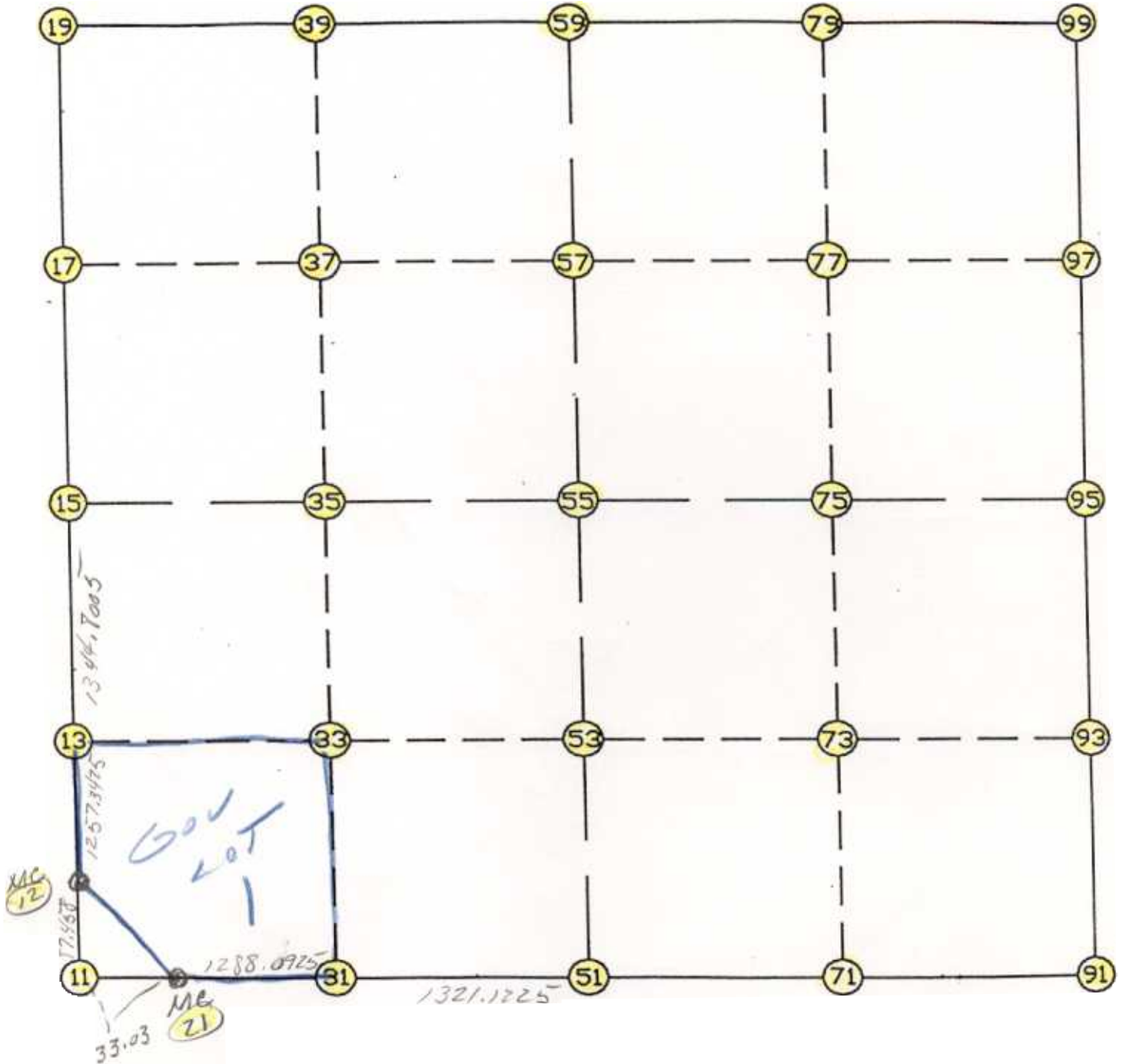


WRIGHT COUNTY SURVEYORS OFFICE

Public Works Building
Buffalo, Minn. 55313

SECTION 33 TOWNSHIP T122 RANGE 227



REMARKS

THE INFORMATION SHOWN HEREON IS A COMPILATION OF WRIGHT COUNTY RECORDS AND IS INTENDED TO BE USED FOR COMPARISON PURPOSES ONLY. THE COUNTY IS NOT RESPONSIBLE FOR ANY INACCURACIES HEREIN CONTAINED.

FROM	TYPE	BEARING	DISTANCE	TO	NORTHING	EASTING
------	------	---------	----------	----	----------	---------

LIST POINTS

POINT	NORTHING	EASTING	ELEVATION	DESCR
10	227002.536136	442816.244118		
11	226997.562811	445176.619522		
12	227085.020369	445176.365561		
13	228341.877508	445141.432833		
15	229686.159270	445104.070249		
17	231016.301165	445063.966175		
19	232346.443059	445023.862101		
21	226997.493217	445209.649449		
31	226994.718876	446497.738878		
33	228336.856070	446463.304674		
35	229678.973436	446428.870978		
37	231013.683464	446392.530547		
39	232348.393492	446356.190116		
51	226991.873394	447818.858313		
53	228331.830498	447786.265010		
55	229671.787602	447753.671708		
57	231011.065764	447721.094919		
59	232350.343925	447688.518131		
71	226991.283240	449140.588129		
73	228327.938352	449110.295818		
75	229664.593464	449080.003507		
77	231001.273833	449050.499256		
79	232337.954203	449020.995004		
91	226990.693085	450462.317944		
93	228324.046205	450434.326625		
95	229657.399325	450406.335306		
97	230991.481903	450379.903592		
99	232325.564481	450353.471878		

START				11	226997.563	445176.620
11	INV N	0-09-59.0 W	87.458	12	227085.020	445176.366
12	INV N	1-35-31.4 W	2602.143	15	229686.159	445104.070
15	INV N	1-43-37.0 W	2661.493	19	232346.443	445023.862
19	INV N	89-54-58.0 E	2664.659	59	232350.344	447688.518
59	INV S	89-28-02.2 E	2665.069	99	232325.564	450353.472
99	INV S	1-08-06.1 E	2668.689	95	229657.399	450406.335
95	INV S	1-12-09.5 E	2667.294	91	226990.693	450462.318
91	INV N	89-58-27.9 W	2643.460	51	226991.873	447818.858
51	INV N	89-52-35.7 W	2609.215	21	226997.493	445209.649
21	INV N	89-52-45.4 W	33.030	11	226997.563	445176.620

START				51	226991.873	447818.858
51	INV N	1-23-36.2 W	2680.707	55	229671.788	447753.672
55	INV N	1-23-36.2 W	2679.349	59	232350.344	447688.518

START				15	229686.159	445104.070
15	INV S	89-41-21.2 E	2649.640	55	229671.788	447753.672
55	INV S	89-41-21.2 E	2652.703	95	229657.399	450406.335

POINT-POINT ANGLES

ANGLE	21 -	11 -	12:	C.W.	269-42-46.4	C.C.W.	90-17-13.6	87.458
ANGLE	11 -	12 -	15:	C.W.	178-34-27.6	C.C.W.	181-25-32.4	2602.143
ANGLE	12 -	15 -	19:	C.W.	179-51-54.3	C.C.W.	180-08-05.7	2661.493
ANGLE	15 -	19 -	59:	C.W.	271-38-35.1	C.C.W.	88-21-24.9	2664.659
ANGLE	19 -	59 -	99:	C.W.	180-36-59.8	C.C.W.	179-23-00.2	2665.069
ANGLE	59 -	99 -	95:	C.W.	268-19-56.0	C.C.W.	91-40-04.0	2668.689
ANGLE	99 -	95 -	91:	C.W.	179-55-56.6	C.C.W.	180-04-03.4	2667.294
ANGLE	95 -	91 -	51:	C.W.	271-13-41.6	C.C.W.	88-46-18.4	2643.460
ANGLE	91 -	51 -	21:	C.W.	180-05-52.2	C.C.W.	179-54-07.8	2609.215
ANGLE	51 -	21 -	11:	C.W.	179-59-50.3	C.C.W.	180-00-09.7	33.030