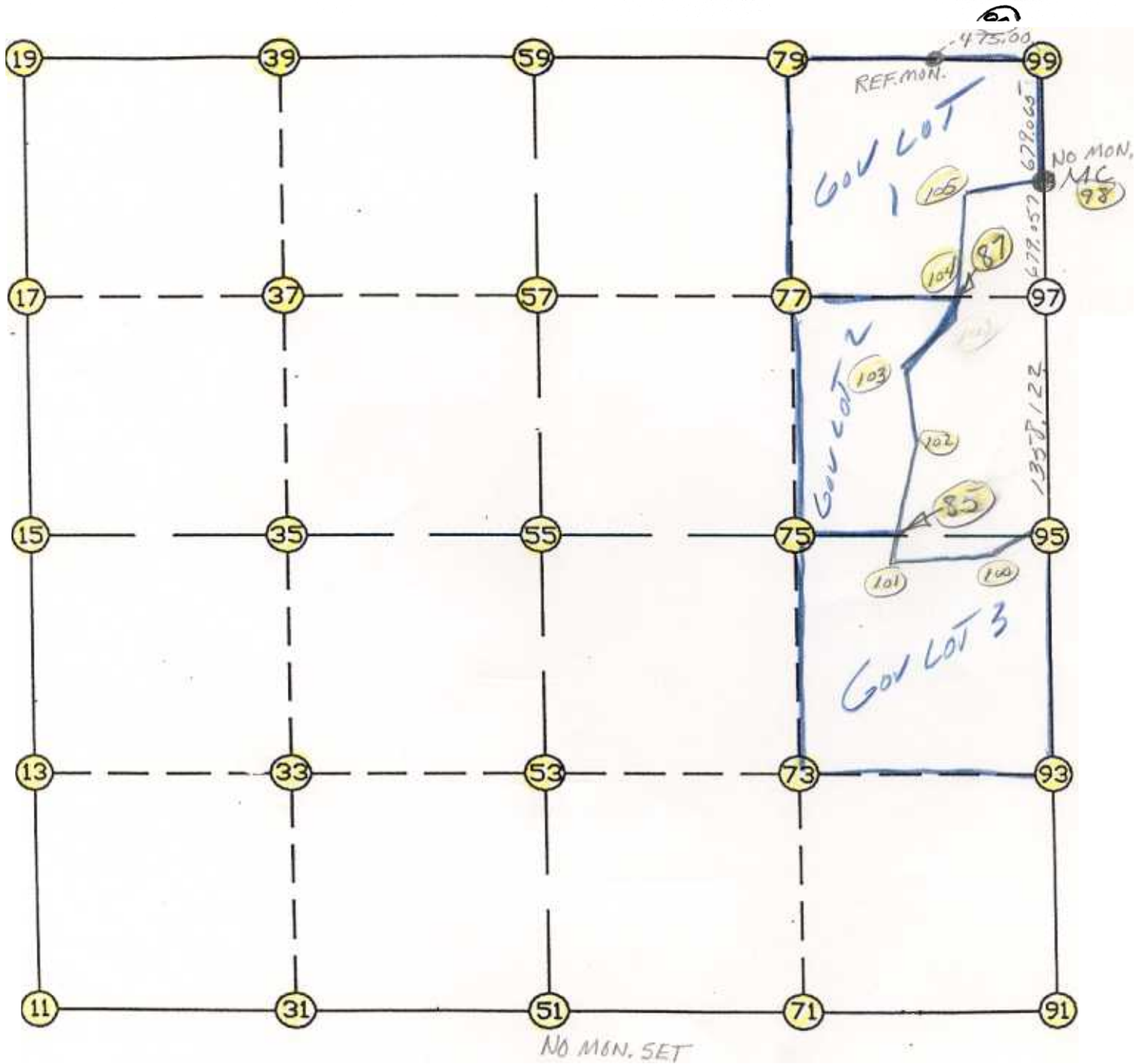


WRIGHT COUNTY SURVEYORS OFFICE

Public Works Building  
Buffalo, Minn. 58313

SECTION 27 TOWNSHIP 122 RANGE 27



REMARKS

---

---

---

THE INFORMATION SHOWN HEREON IS A COMPILATION OF WRIGHT COUNTY RECORDS AND IS INTENDED TO BE USED FOR COMPARISON PURPOSES ONLY. THE COUNTY IS NOT RESPONSIBLE FOR ANY INACCURACIES HEREIN CONTAINED.

===== COGO =====

Tuesday December 12, 1995

3:05 PM

Coordinate File Name: SEC-27.CRD    Lowest pt #:    1    Highest pt #:    105  
Job #                : 95-112  
Description: COUNTY COORDINATES SECTION 27 T122 R27  
# of chars. in point descr.: 10

FROM TYPE	BEARING	DISTANCE	TO	NORTHING	EASTING
-----					
LIST POINTS					
POINT	NORTHING	EASTING	ELEVATION	DESCR	
-----					
11	232325.564481	450353.471878			
13	233673.035053	450341.869396			
15	235020.505625	450330.266914			
17	236345.647648	450300.978177			
19	237670.789670	450271.689440			
31	232312.589549	451655.447775			
33	233662.665057	451647.361401			
35	235012.740564	451639.275026			
37	236355.536928	451622.332398			
39	237698.333292	451605.389769			
51	232299.614617	452957.423673			
53	233652.295060	452952.853406			
55	235004.975503	452948.283139			
57	236365.426209	452943.686618			
59	237725.876914	452939.090097			
71	232286.432721	454279.898534			
73	233641.762798	454278.504422			
75	234997.092875	454277.110309			
77	236356.378904	454275.625405			
79	237715.664902	454274.140502			
85	234992.081573	455121.898913			
87	236348.855433	455383.226164			
91	232273.250825	455602.373395			
93	233631.230536	455604.155437			
95	234989.210247	455605.937480			
97	236347.331577	455607.567322			
98	237026.388088	455608.382238			
99	237705.452890	455609.190906			
100	234928.702939	455555.223935			
101	234928.792351	455110.267642			
102	235679.674687	455248.264532			
103	236074.103684	455218.744926			
104	236364.809548	455392.777159			
105	236893.709783	455395.488894			

11	INV	N	0-29-36.0	W	2695.041	15	235020.506	450330.267
15	INV	N	1-15-58.2	W	2650.931	19	237670.790	450271.689
19	INV	N	88-49-00.8	E	2667.969	59	237725.877	452939.090
59	INV	S	89-33-42.3	E	2670.179	99	237705.453	455609.191
99	INV	S	0-04-05.6	W	679.065	98	237026.388	455608.382
98	INV	S	0-04-07.5	W	2037.179	95	234989.210	455605.937
95	INV	S	0-04-30.7	W	2715.962	91	232273.251	455602.373
91	INV	N	89-25-44.1	W	2645.081	51	232299.615	452957.424
51	INV	N	89-25-44.5	W	2604.081	11	232325.564	450353.472
START						51	232299.615	452957.424
51	INV	N	0-11-36.9	W	2705.376	55	235004.976	452948.283
55	INV	N	0-11-36.9	W	2720.917	59	237725.877	452939.090
START						15	235020.506	450330.267
15	INV	S	89-39-36.4	E	2618.062	55	235004.976	452948.283
55	INV	S	89-39-36.4	E	2657.701	95	234989.210	455605.937

POINT-POINT ANGLES

ANGLE	51	-	11	-	15:	C.W.	268-56-08.5	C.C.W.	91-03-51.5	2695.041
ANGLE	11	-	15	-	19:	C.W.	179-13-37.8	C.C.W.	180-46-22.2	2650.931
ANGLE	15	-	19	-	59:	C.W.	270-04-59.0	C.C.W.	89-55-01.0	2667.969
ANGLE	19	-	59	-	99:	C.W.	181-37-16.9	C.C.W.	178-22-43.1	2670.179
ANGLE	59	-	99	-	98:	C.W.	269-37-47.9	C.C.W.	90-22-12.1	679.065
ANGLE	99	-	98	-	95:	C.W.	180-00-01.9	C.C.W.	179-59-58.1	2037.179
ANGLE	98	-	95	-	91:	C.W.	180-00-23.1	C.C.W.	179-59-36.9	2715.962
ANGLE	95	-	91	-	51:	C.W.	270-29-45.2	C.C.W.	89-30-14.8	2645.081
ANGLE	91	-	51	-	11:	C.W.	179-59-59.6	C.C.W.	180-00-00.4	2604.081

-----  
Coordinates stored                      Tuesday December 12, 1995                      3:06 PM