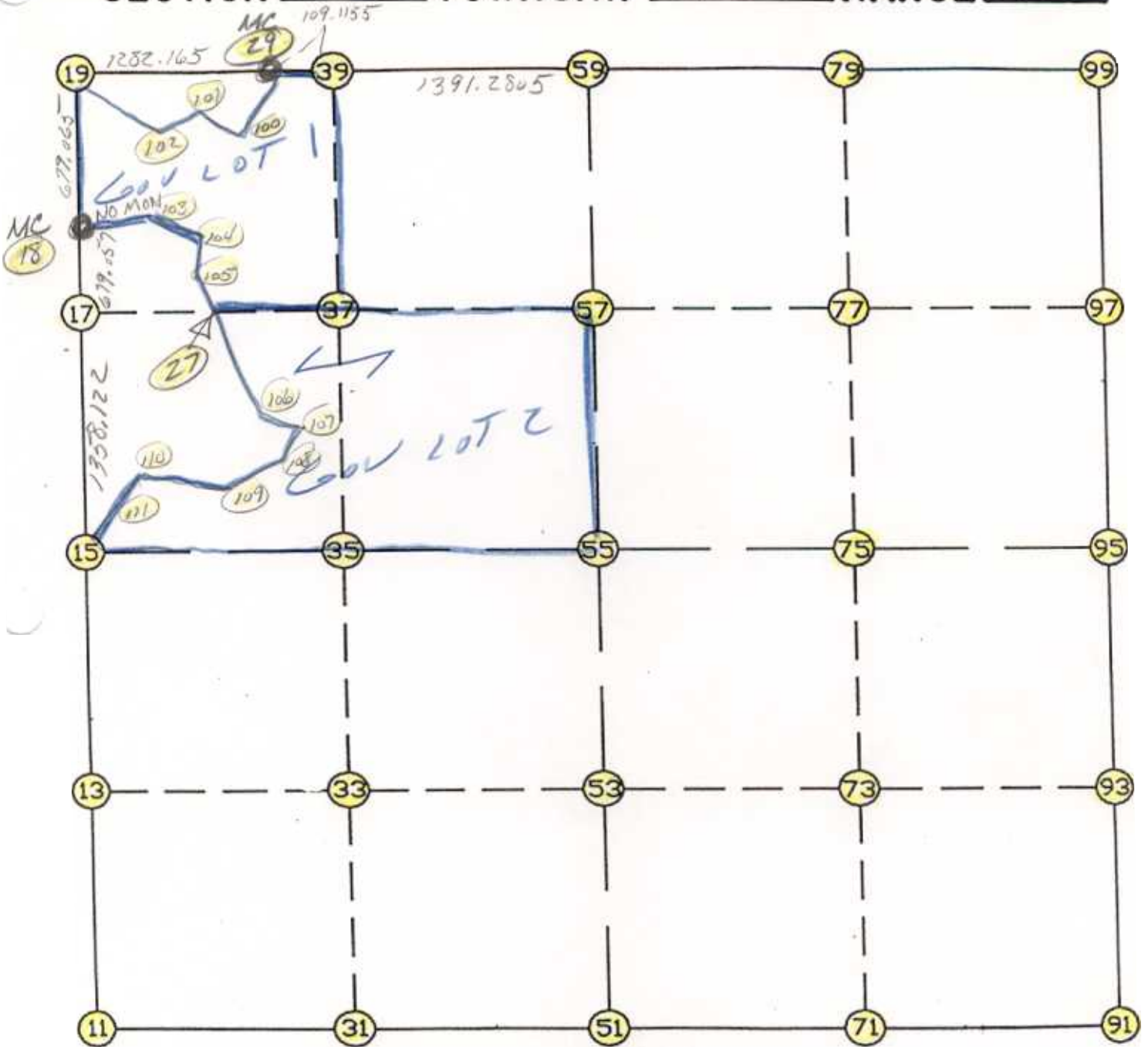


WRIGHT COUNTY SURVEYORS OFFICE

Public Works Building
Buffalo, Minn. 55313

SECTION 26 TOWNSHIP 122 RANGE 27



REMARKS

THE INFORMATION SHOWN HEREON IS A COMPILATION OF WRIGHT COUNTY RECORDS AND IS INTENDED TO BE USED FOR COMPARISON PURPOSES ONLY. THE COUNTY IS NOT RESPONSIBLE FOR ANY INACCURACIES HEREIN CONTAINED.

===== COGO =====

Tuesday December 12, 1995

2:50 PM

Coordinate File Name: SEC-26.CRD Lowest pt #: 1 Highest pt #: 111

Job # : 95-112

Description: COUNTY COORDINATES SECTION 26 T122 R27

of chars. in point descr.: 10

FROM TYPE BEARING DISTANCE TO NORTHING EASTING

LIST POINTS

POINT NORTHING EASTING ELEVATION DESCR

11	232273.250825	455602.373395		
13	233631.230536	455604.155437		
15	234989.210247	455605.937480		
17	236347.331269	455607.567322		
18	237026.388088	455608.382238		
19	237705.452890	455609.190906		
27	236332.696169	456323.411365		
29	237632.416777	456889.273883		
31	232260.695053	456979.772673		
33	233623.413020	456984.766942		
35	234986.130987	456989.761211		
37	236318.984317	456994.096734		
39	237629.927656	456998.360989		
51	232248.139282	458357.171952		
53	233615.595504	458365.378447		
55	234983.051726	458373.584942		
57	236290.620889	458381.432038		
59	237598.190052	458389.279134		
71	232292.529939	459708.805163		
73	233636.297517	459712.293177		
75	234980.065095	459715.781191		
77	236274.723970	459717.091261		
79	237569.382846	459718.401332		
91	232336.920596	461060.438375		
93	233656.999530	461059.207907		
95	234977.078463	461057.977439		
97	236258.827051	461052.750485		
99	237540.575640	461047.523530		
100	237462.521613	456793.087250		
101	237521.583191	456400.259691		
102	237377.478056	456068.096172		
103	237042.923321	455908.221346		
104	236830.433685	456127.965394		
105	236562.927019	456182.483631		
106	236018.803069	456515.550008		
107	235832.789649	456757.540542		
108	235558.084342	456565.868736		
109	235168.140322	456157.480929		
110	235207.240723	455834.701205		
111	235076.059346	455678.725297		



START					11	232273.251	455602.373	
11	INV	N	0-04-30.7	E	2715.962	15	234989.210	455605.937
15	INV	N	0-04-07.5	E	2037.179	18	237026.388	455608.382
18	INV	N	0-04-05.6	E	679.065	19	237705.453	455609.191
19	INV	S	86-44-04.1	E	1282.165	29	237632.417	456889.274
29	INV	S	88-41-34.3	E	1500.396	59	237598.190	458389.279
59	INV	S	88-45-30.1	E	2658.869	99	237540.576	461047.524
99	INV	S	0-14-01.1	E	2563.518	95	234977.078	461057.977
95	INV	S	0-03-12.3	E	2640.159	91	232336.921	461060.438
91	INV	S	88-07-08.2	W	2704.724	51	232248.139	458357.172
51	INV	N	89-28-39.8	W	2754.913	11	232273.251	455602.373

START						51	232248.139	458357.172
51	INV	N	0-20-37.8	E	2734.962	55	234983.052	458373.585
55	INV	N	0-20-37.8	E	2615.185	59	237598.190	458389.279

START						15	234989.210	455605.937
15	INV	S	89-52-21.0	E	2767.654	55	234983.052	458373.585
55	INV	S	89-52-21.0	E	2684.399	95	234977.078	461057.977

POINT-POINT ANGLES

ANGLE	51 -	11 -	15:	C.W.	269-33-10.5	C.C.W.	90-26-49.5	2715.962
ANGLE	11 -	15 -	18:	C.W.	179-59-36.9	C.C.W.	180-00-23.1	2037.179
ANGLE	15 -	18 -	19:	C.W.	179-59-58.1	C.C.W.	180-00-01.9	679.065
ANGLE	18 -	19 -	29:	C.W.	273-11-50.2	C.C.W.	86-48-09.8	1282.165
ANGLE	19 -	29 -	59:	C.W.	178-02-29.8	C.C.W.	181-57-30.2	1500.396
ANGLE	29 -	59 -	99:	C.W.	179-56-04.2	C.C.W.	180-03-55.8	2658.869
ANGLE	59 -	99 -	95:	C.W.	268-31-29.0	C.C.W.	91-28-31.0	2563.518
ANGLE	99 -	95 -	91:	C.W.	180-10-48.9	C.C.W.	179-49-11.1	2640.159
ANGLE	95 -	91 -	51:	C.W.	268-10-20.5	C.C.W.	91-49-39.5	2704.724
ANGLE	91 -	51 -	11:	C.W.	182-24-11.9	C.C.W.	177-35-48.1	2754.913

Coordinates stored

Tuesday December 12, 1995

2:51 PM