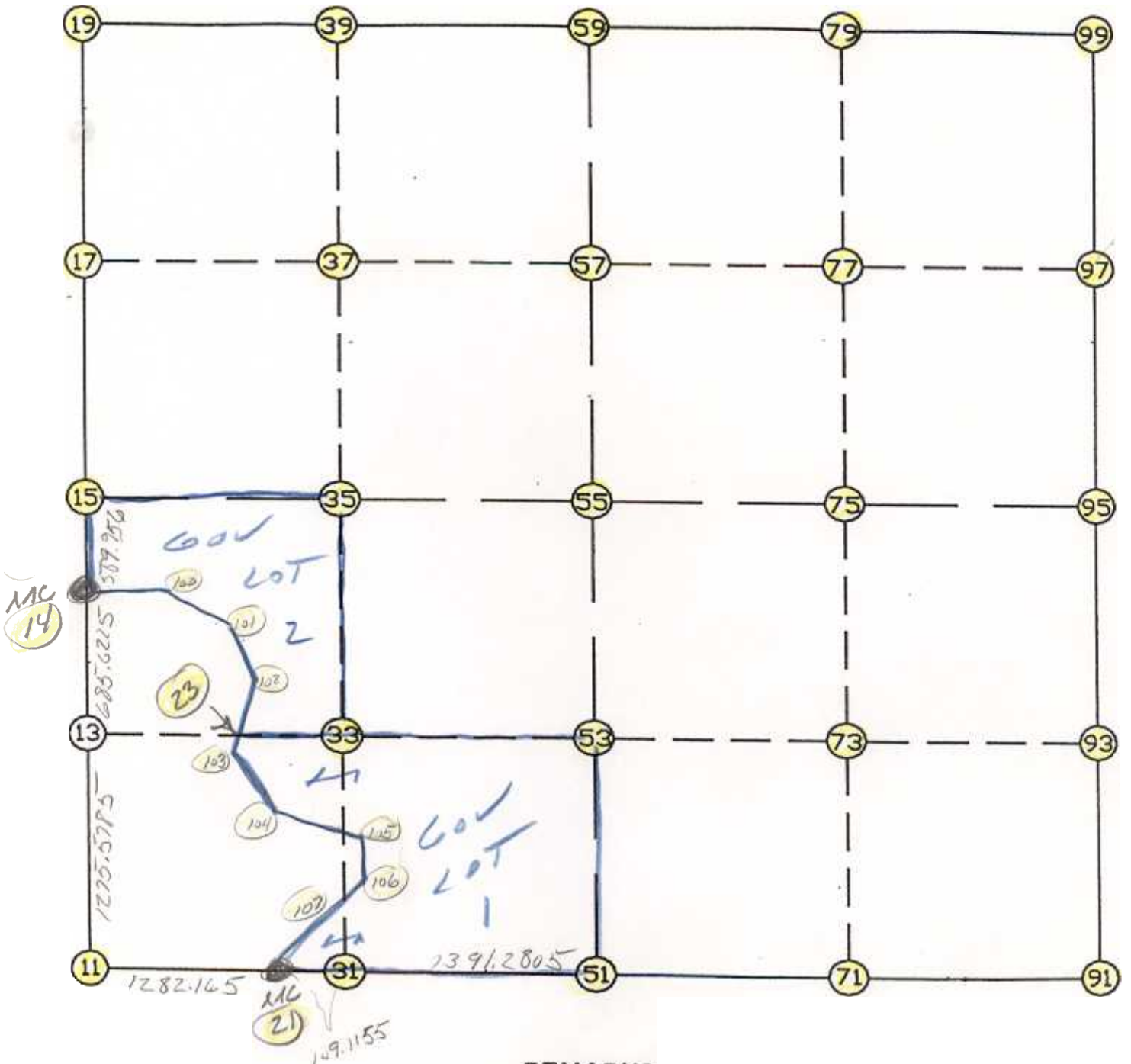


WRIGHT COUNTY SURVEYORS OFFICE

Public Works Building

Buffalo, Minn. 55313

SECTION 23 TOWNSHIP 122 RANGE 27



REMARKS

THE INFORMATION SHOWN HEREON IS A COMPILATION OF WRIGHT COUNTY RECORDS AND IS INTENDED TO BE USED FOR COMPARISON PURPOSES ONLY. THE COUNTY IS NOT RESPONSIBLE FOR ANY INACCURACIES HEREIN CONTAINED.

COGO =====

Tuesday December 12, 1995

2:13 PM

Coordinate File Name: SEC-23.CRD Lowest pt #: 1 Highest pt #: 107
 Job # : 95-112
 Description: COUNTY COORDINATES SECTION 23 T122 R27
 # of chars. in point descr.: 10

FROM	TYPE	BEARING	DISTANCE	TO	NORTHING	EASTING

LIST POINTS						
POINT		NORTHING	EASTING		ELEVATION	DESCR

11		237705.452890	455609.190906			
13		238979.604252	455669.513512			
14		239664.459298	455701.936850			
15		240253.755111	455729.837758			
17		241588.183863	455760.745702			
19		242922.612615	455791.653647			
21		237632.416777	456889.273883			
23		238964.274941	456312.704659			
31		237629.927663	456998.360677			
33		238947.104968	457033.126767			
35		240242.381173	457067.314790			
37		241577.759685	457086.705618			
39		242913.138196	457106.096447			
51		237598.190052	458389.279134			
53		238914.598643	458397.035478			
55		240231.007234	458404.791822			
57		241567.335506	458412.665534			
59		242903.663778	458420.539246			
71		237569.382846	459718.401332			
73		238894.560583	459724.160023			
75		240219.738321	459729.918715			
77		241553.333234	459735.064410			
79		242886.928147	459740.210106			
91		237540.575640	461047.523530			
93		238874.522524	461051.284569			
95		240208.469408	461055.045607			
97		241539.330962	461057.463286			
99		242870.192515	461059.880965			
100		239663.924060	455956.822565			
101		239506.215830	456207.547933			
102		239239.795888	456354.273613			
103		238931.756711	456307.798502			
104		238583.721451	456567.808061			
105		238275.834025	457036.124023			
106		237965.458728	457022.052873			
107		237808.767087	456933.365264			

START					11	237705.453	455609.191	
11	INV	N	2-42-38.0	E	1961.201	14	239664.459	455701.937
14	INV	N	2-42-38.6	E	589.956	15	240253.755	455729.838
15	INV	N	1-19-36.6	E	2669.573	19	242922.613	455791.654
19	INV	S	89-35-13.3	E	2628.954	59	242903.664	458420.539
59	INV	S	89-16-24.4	E	2639.554	99	242870.193	461059.881
99	INV	S	0-06-14.7	W	2661.727	95	240208.469	461055.046
95	INV	S	0-09-41.6	W	2667.904	91	237540.576	461047.524
91	INV	N	88-45-30.1	W	2658.869	51	237598.190	458389.279
51	INV	N	88-41-34.3	W	1500.396	21	237632.417	456889.274
21	INV	N	86-44-04.1	W	1282.165	11	237705.453	455609.191
START						51	237598.190	458389.279
51	INV	N	0-20-15.3	E	2632.863	55	240231.007	458404.792
55	INV	N	0-20-15.3	E	2672.703	59	242903.664	458420.539
START						15	240253.755	455729.838
15	INV	S	89-30-46.0	E	2675.051	55	240231.007	458404.792
55	INV	S	89-30-46.0	E	2650.350	95	240208.469	461055.046

POINT-POINT ANGLES

ANGLE	21	-	11	-	14:	C.W.	269-26-42.1	C.C.W.	90-33-17.9	1961.201
ANGLE	11	-	14	-	15:	C.W.	180-00-00.6	C.C.W.	179-59-59.4	589.956
ANGLE	14	-	15	-	19:	C.W.	178-36-58.1	C.C.W.	181-23-01.9	2669.573
ANGLE	15	-	19	-	59:	C.W.	269-05-10.1	C.C.W.	90-54-49.9	2628.954
ANGLE	19	-	59	-	99:	C.W.	180-18-48.9	C.C.W.	179-41-11.1	2639.554
ANGLE	59	-	99	-	95:	C.W.	269-22-39.1	C.C.W.	90-37-20.9	2661.727
ANGLE	99	-	95	-	91:	C.W.	180-03-26.9	C.C.W.	179-56-33.1	2667.904
ANGLE	95	-	91	-	51:	C.W.	271-04-48.3	C.C.W.	88-55-11.7	2658.869
ANGLE	91	-	51	-	21:	C.W.	180-03-55.8	C.C.W.	179-56-04.2	1500.396
ANGLE	51	-	21	-	11:	C.W.	181-57-30.2	C.C.W.	178-02-29.8	1282.165

Coordinates stored

Tuesday December 12, 1995

2:15 PM