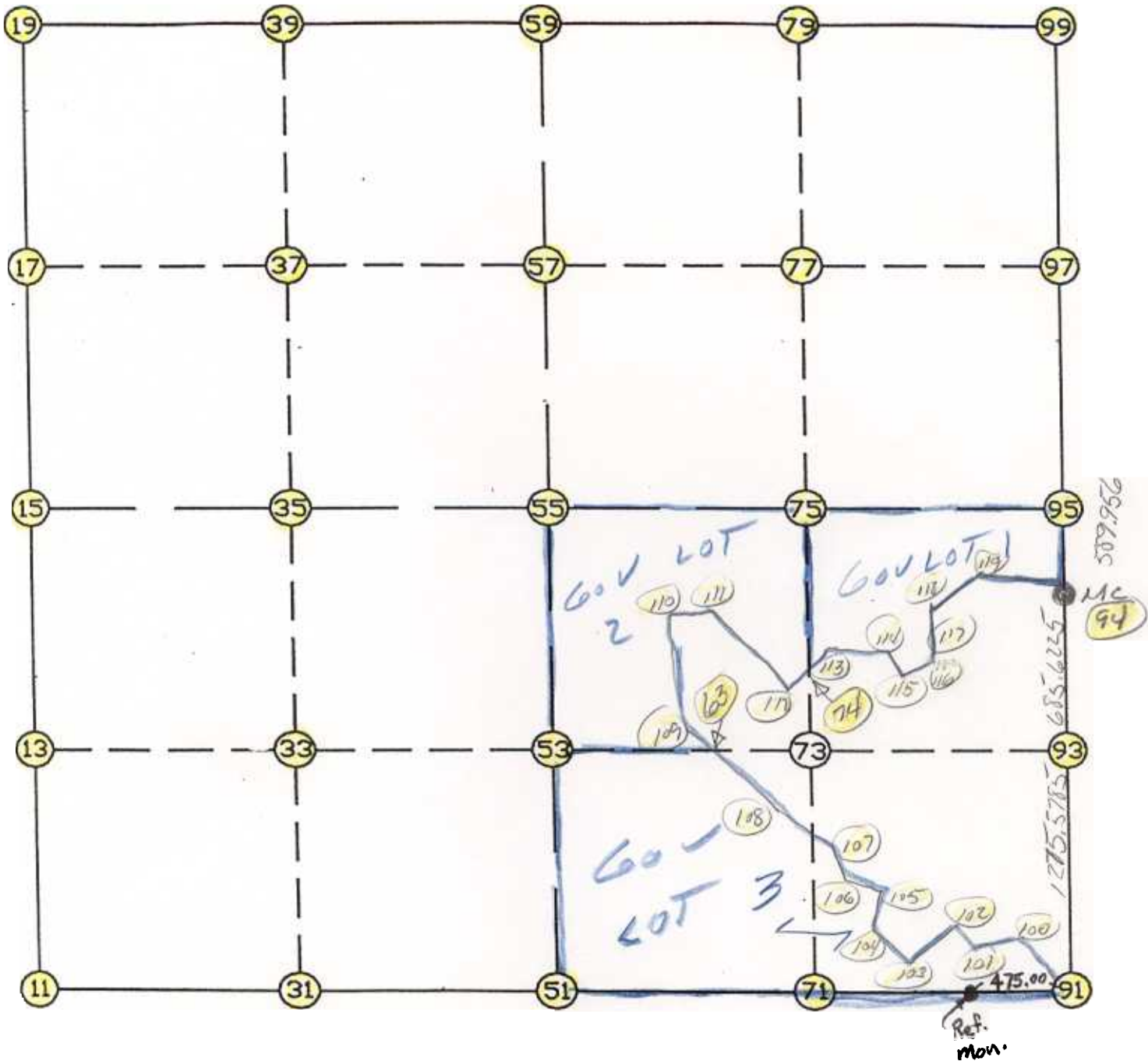


WRIGHT COUNTY SURVEYORS OFFICE

Public Works Building

Buffalo, Minn. 55313

SECTION 22 TOWNSHIP 122 RANGE 27



REMARKS

THE INFORMATION SHOWN HEREON IS A COMPILATION OF WRIGHT COUNTY RECORDS AND IS INTENDED TO BE USED FOR COMPARISON PURPOSES ONLY. THE COUNTY IS NOT RESPONSIBLE FOR ANY INACCURACIES HEREIN CONTAINED.

FROM TYPE	BEARING	DISTANCE	TO	NORTHING	EASTING
LIST POINTS					
POINT	NORTHING	EASTING	ELEVATION	DESCR	
11	237670.789670	450271.689440			
13	238999.834688	450316.589810			
15	240328.879706	450361.490180			
17	241660.421325	450405.788267			
19	242991.962944	450450.086355			
31	237698.333292	451605.389769			
33	239004.283361	451649.664467			
35	240310.233430	451693.939165			
37	241645.534460	451738.868912			
39	242980.835490	451783.798660			
51	237725.876914	452939.090097			
53	239008.732034	452982.739124			
55	240291.587154	453026.388150			
57	241630.647595	453071.949557			
59	242969.708036	453117.510964			
63	238996.571708	454104.405050			
71	237715.664902	454274.140502			
74	239191.948278	454334.168827			
75	240272.671133	454378.112954			
77	241609.415729	454416.347630			
79	242946.160326	454454.582306			
91	237705.452890	455609.190906			
93	238979.603884	455669.513494			
94	239664.459298	455701.936850			
95	240253.755111	455729.837758			
97	241588.183863	455760.745702			
99	242922.612615	455791.653647			
100	238039.025145	455389.178328			
101	238138.135108	455110.480183			
102	238201.164910	454994.560187			
103	238144.783486	454881.383861			
104	238295.973696	454625.507508			
105	238458.358824	454575.960220			
106	238558.337534	454443.490729			
107	238728.236090	454335.446005			
108	238866.394114	454149.145149			
109	239026.786541	454094.020661			
110	239415.037147	453901.234398			
111	239383.267191	454065.311712			
112	239185.681867	454328.328810			
113	239383.953323	454513.109046			
114	239238.993931	454864.785562			
115	239121.941763	454951.509221			
116	239220.756690	455023.292191			
117	239318.643397	455062.847648			
118	239454.720011	455088.096109			
119	239640.728717	455368.692321			

START						11	237670.790	450271.689
	11	INV N	1-56-05.8 E	2659.607		15	240328.880	450361.490
	15	INV N	1-54-19.5 E	2664.557		19	242991.963	450450.086
	19	INV S	89-31-19.1 E	2667.517		59	242969.708	453117.511
	59	INV S	88-59-27.8 E	2674.557		99	242922.613	455791.654
	99	INV S	1-19-36.6 W	2669.573		95	240253.755	455729.838
	95	INV S	2-42-38.6 W	589.956		94	239664.459	455701.937
	94	INV S	2-42-38.0 W	1961.201		91	237705.453	455609.191
	91	INV N	89-33-42.3 W	2670.179		51	237725.877	452939.090
	51	INV S	88-49-00.8 W	2667.969		11	237670.790	450271.689
START						51	237725.877	452939.090
	51	INV N	1-56-55.4 E	2567.195		55	240291.587	453026.388
	55	INV N	1-56-55.4 E	2679.671		59	242969.708	453117.511
START						15	240328.880	450361.490
	15	INV S	89-11-53.7 E	2665.159		55	240291.587	453026.388
	55	INV S	89-11-53.7 E	2703.714		95	240253.755	455729.838

POINT-POINT ANGLES

ANGLE	51 -	11 -	15:	C.W.	273-07-05.0	C.C.W.	86-52-55.0	2659.607
ANGLE	11 -	15 -	19:	C.W.	179-58-13.8	C.C.W.	180-01-46.2	2664.557
ANGLE	15 -	19 -	59:	C.W.	268-34-21.3	C.C.W.	91-25-38.7	2667.517
ANGLE	19 -	59 -	99:	C.W.	180-31-51.4	C.C.W.	179-28-08.6	2674.557
ANGLE	59 -	99 -	95:	C.W.	270-19-04.4	C.C.W.	89-40-55.6	2669.573
ANGLE	99 -	95 -	94:	C.W.	181-23-01.9	C.C.W.	178-36-58.1	589.956
ANGLE	95 -	94 -	91:	C.W.	179-59-59.4	C.C.W.	180-00-00.6	1961.201
ANGLE	94 -	91 -	51:	C.W.	267-43-39.7	C.C.W.	92-16-20.3	2670.179
ANGLE	91 -	51 -	11:	C.W.	178-22-43.1	C.C.W.	181-37-16.9	2667.969

Coordinates stored

Tuesday December 12, 1995

1:56 PM