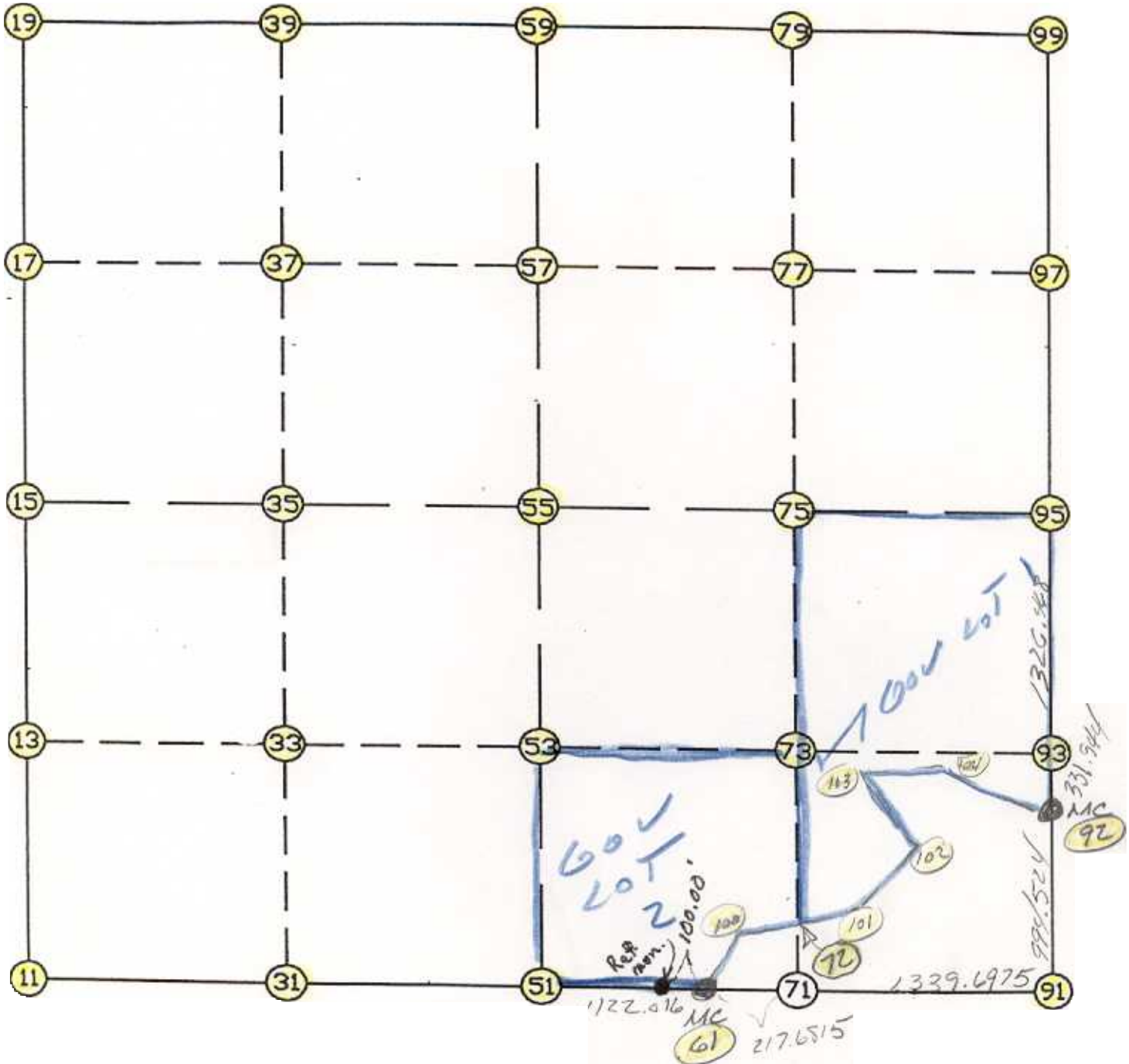


WRIGHT COUNTY SURVEYORS OFFICE

Public Works Building
Buffalo, Minn. 55313

SECTION 12 TOWNSHIP 122 RANGE 27



REMARKS

THE INFORMATION SHOWN HEREON IS A COMPILATION OF WRIGHT COUNTY RECORDS AND IS INTENDED TO BE USED FOR COMPARISON PURPOSES ONLY. THE COUNTY IS NOT RESPONSIBLE FOR ANY INACCURACIES HEREIN CONTAINED.

 FROM TYPE BEARING DISTANCE TO NORTHING EASTING

LIST POINTS

POINT	NORTHING	EASTING	ELEVATION	DESCR
11	248286.785637	461038.951412		
13	249604.791925	461044.353462		
15	250922.798214	461049.755511		
17	252237.779081	461051.735909		
19	253552.759947	461053.716306		
31	248275.930063	462365.901230		
33	249592.492847	462372.726015		
35	250909.055632	462379.550800		
37	252228.861616	462384.694585		
39	253548.667601	462389.838370		
51	248265.074490	463692.851047		
53	249580.193770	463701.098568		
55	250895.313049	463709.346089		
57	252219.944151	463717.653262		
59	253544.575254	463725.960434		
61	248255.400275	464814.825297		
71	248249.741714	465032.433212		
72	248410.963407	465033.221011		
73	249560.793520	465038.839575		
75	250881.506892	465045.293149		
77	252209.290816	465050.990377		
79	253537.074739	465056.687606		
91	248214.916699	466371.678003		
92	249209.303129	466388.236654		
93	249541.244539	466386.836260		
95	250867.700735	466381.240209		
97	252198.637480	466384.327493		
99	253529.574225	466387.414777		
100	248345.857931	464847.804137		
101	248522.660982	465351.329660		
102	248961.216121	465576.355058		
103	249355.204072	465353.963961		
104	249421.934132	465717.328937		

START				11	248286.786	461038.951
11	INV N	0-14-05.4 E	2636.035	15	250922.798	461049.756
15	INV N	0-05-10.6 E	2629.965	19	253552.760	461053.716
19	INV S	89-49-28.2 E	2672.257	59	253544.575	463725.960
59	INV S	89-40-37.4 E	2661.497	99	253529.574	466387.415
99	INV S	0-07-58.5 W	2661.881	95	250867.701	466381.240
95	INV S	0-14-30.2 E	1658.412	92	249209.303	466388.237
92	INV S	0-57-14.4 W	994.524	91	248214.917	466371.678
91	INV N	88-30-37.6 W	1557.379	61	248255.400	464814.825
61	INV N	89-30-21.5 W	1122.016	51	248265.074	463692.851
51	INV N	89-31-52.6 W	2653.988	11	248286.786	461038.951
START				51	248265.074	463692.851
51	INV N	0-21-33.5 E	2630.290	55	250895.313	463709.346
55	INV N	0-21-33.5 E	2649.314	59	253544.575	463725.960
START				15	250922.798	461049.756
15	INV S	89-24-28.5 E	2659.733	55	250895.313	463709.346
55	INV S	89-24-28.5 E	2672.037	95	250867.701	466381.240

POINT-POINT ANGLES

ANGLE	51 -	11 -	15:	C.W.	269-45-58.0	C.C.W.	90-14-02.0	2636.035
ANGLE	11 -	15 -	19:	C.W.	179-51-05.2	C.C.W.	180-08-54.8	2629.965
ANGLE	15 -	19 -	59:	C.W.	270-05-21.1	C.C.W.	89-54-38.9	2672.257
ANGLE	19 -	59 -	99:	C.W.	180-08-50.8	C.C.W.	179-51-09.2	2661.497
ANGLE	59 -	99 -	95:	C.W.	269-48-35.9	C.C.W.	90-11-24.1	2661.881
ANGLE	99 -	95 -	92:	C.W.	179-37-31.4	C.C.W.	180-22-28.6	1658.412
ANGLE	95 -	92 -	91:	C.W.	181-11-44.6	C.C.W.	178-48-15.4	994.524
ANGLE	92 -	91 -	61:	C.W.	270-32-08.0	C.C.W.	89-27-52.0	1557.379
ANGLE	91 -	61 -	51:	C.W.	179-00-16.1	C.C.W.	180-59-43.9	1122.016
ANGLE	61 -	51 -	11:	C.W.	179-58-28.9	C.C.W.	180-01-31.1	2653.988