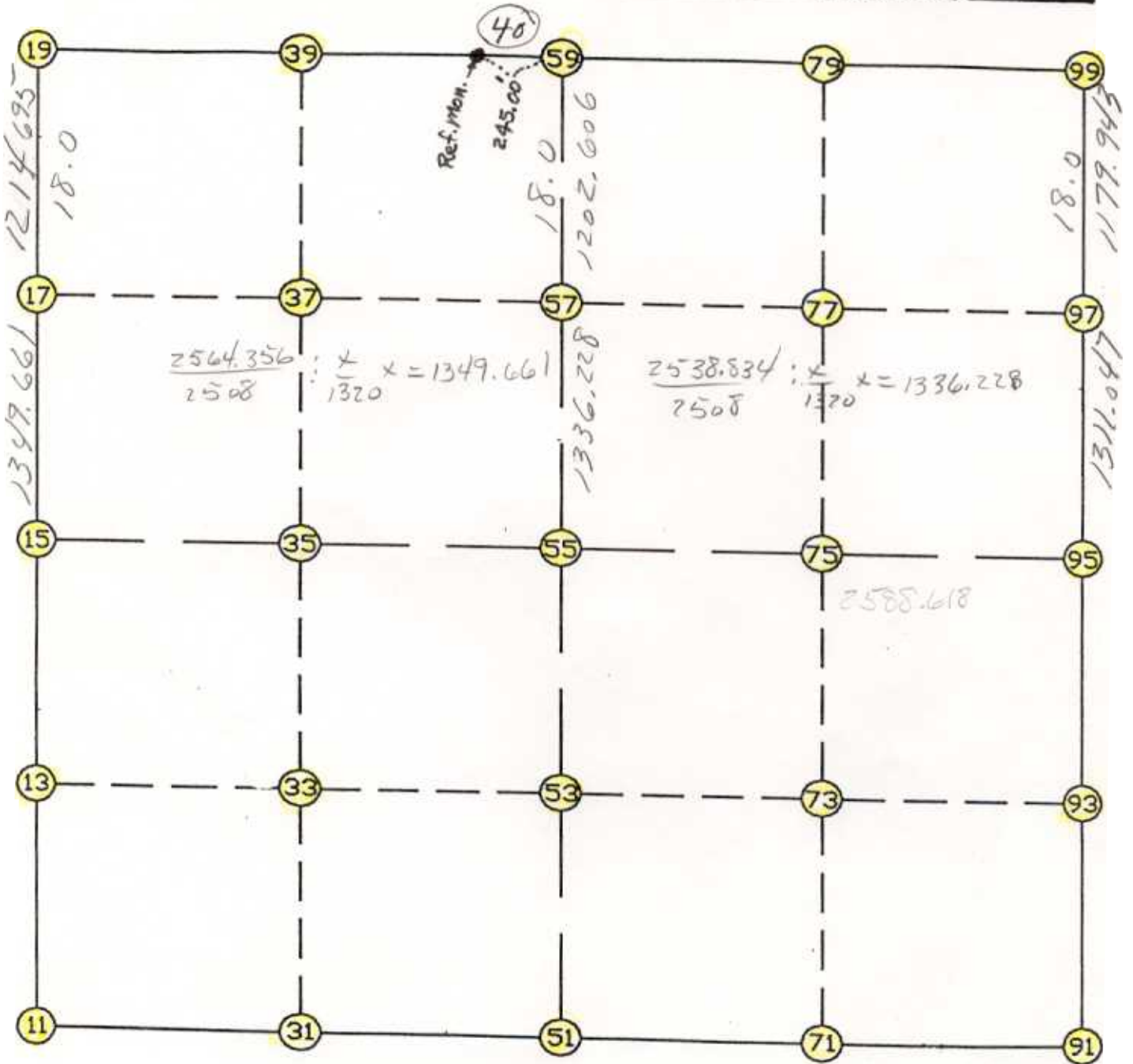


WRIGHT COUNTY SURVEYORS OFFICE

Public Works Building
Buffalo, Minn. 55313

SECTION 2 TOWNSHIP 122 RANGE 27



REMARKS

THE INFORMATION SHOWN HEREON IS A COMPILATION OF WRIGHT COUNTY RECORDS AND IS INTENDED TO BE USED FOR COMPARISON PURPOSES ONLY. THE COUNTY IS NOT RESPONSIBLE FOR ANY INACCURACIES HEREIN CONTAINED.

Coordinate File Name: SEC-02.CRD Lowest pt #: 1 Highest pt #: 99
 Job # : 95-112
 Description: COUNTY COORDINATES SECTION 2 T122 R27
 # of chars. in point descr.: 10

FROM	TYPE	BEARING	DISTANCE	TO	NORTHING	EASTING
------	------	---------	----------	----	----------	---------

LIST POINTS

POINT	NORTHING	EASTING	ELEVATION	DESCR
11	253535.044985	455759.721679		
13	254853.383607	455737.158400		
15	256171.722229	455714.595120		
17	257521.176012	455690.945586		
19	258735.684432	455669.661006		
31	253548.055309	457090.256824		
33	254863.175788	457066.200912		
35	256178.296267	457042.145001		
37	257521.010503	457017.311565		
39	258729.453518	456994.961468		
51	253561.065634	458420.791968		
53	254872.967970	458395.243425		
55	256184.870305	458369.694882		
57	257520.844993	458343.677543		
59	258723.222604	458320.261931		
71	253556.912791	459737.254137		
73	254874.096223	459700.620951		
75	256191.279655	459663.987765		
77	257514.786155	459653.380659		
79	258705.942501	459643.834259		
91	253552.759947	461053.716306		
93	254875.224476	461005.998478		
95	256197.689005	460958.280649		
97	257508.727317	460963.083773		
99	258688.662398	460967.406586		

START				11	253535.045	455759.722
11	INV N	0-58-49.9 W	2637.063	15	256171.722	455714.595
15	INV N	1-00-14.5 W	2564.356	19	258735.684	455669.661
19	INV S	89-43-50.3 E	2650.630	59	258723.223	458320.262
59	INV S	89-15-07.2 E	2647.370	99	258688.662	460967.407
99	INV S	0-12-35.7 W	2490.990	95	256197.689	460958.281
95	INV S	2-03-59.3 E	2646.650	91	253552.760	461053.716
91	INV N	89-49-09.3 W	2632.937	51	253561.066	458420.792
51	INV S	89-26-23.2 W	2661.198	11	253535.045	455759.722
START				51	253561.066	458420.792
51	INV N	1-06-56.4 W	2624.302	55	256184.870	458369.695
55	INV N	1-06-56.4 W	2538.834	59	258723.223	458320.262
START				15	256171.722	455714.595
15	INV N	89-42-58.6 E	2655.132	55	256184.870	458369.695
55	INV N	89-42-58.6 E	2588.618	95	256197.689	460958.281

POINT-POINT ANGLES

ANGLE	51 -	11 -	15:	C.W.	269-34-47.0	C.C.W.	90-25-13.0	2637.063
ANGLE	11 -	15 -	19:	C.W.	179-58-35.4	C.C.W.	180-01-24.6	2564.356
ANGLE	15 -	19 -	59:	C.W.	271-16-24.2	C.C.W.	88-43-35.8	2650.630
ANGLE	19 -	59 -	99:	C.W.	180-28-43.0	C.C.W.	179-31-17.0	2647.370
ANGLE	59 -	99 -	95:	C.W.	269-27-42.9	C.C.W.	90-32-17.1	2490.990
ANGLE	99 -	95 -	91:	C.W.	177-43-25.0	C.C.W.	182-16-35.0	2646.650
ANGLE	95 -	91 -	51:	C.W.	272-14-50.0	C.C.W.	87-45-10.0	2632.937
ANGLE	91 -	51 -	11:	C.W.	179-15-32.5	C.C.W.	180-44-27.5	2661.198
