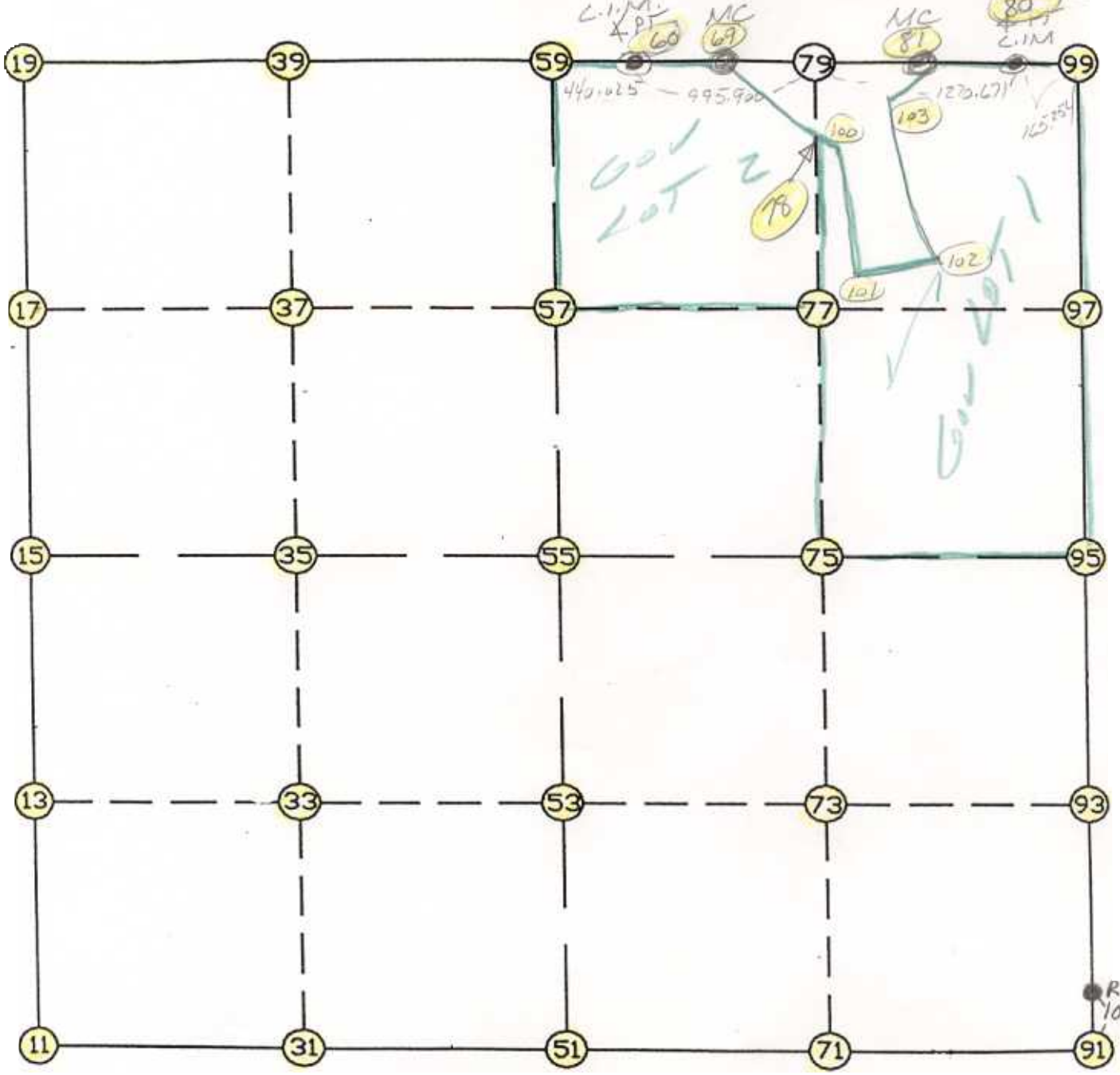


WRIGHT COUNTY SURVEYORS OFFICE

Public Works Building
Buffalo, Minn. 55313

SECTION 34 TOWNSHIP 121 RANGE 27



REMARKS

THE INFORMATION SHOWN HEREON IS A COMPILATION OF WRIGHT COUNTY RECORDS AND IS INTENDED TO BE USED FOR COMPARISON PURPOSES ONLY. THE COUNTY IS NOT RESPONSIBLE FOR ANY INACCURACIES HEREIN CONTAINED.

FROM TYPE	BEARING	DISTANCE	TO	NORTHING	EASTING
-----------	---------	----------	----	----------	---------

LIST POINTS					
POINT	NORTHING	EASTING	ELEVATION	DESCR	
11	195464.174950	450311.153480			
13	196782.035446	450196.562276			
15	198099.895941	450081.971071			
17	199411.406989	449970.225217			
19	200722.918038	449858.479363			
31	195446.332798	451617.372188			
33	196762.108476	451536.674983			
35	198077.884154	451455.977778			
37	199392.508552	451376.631158			
39	200707.132950	451297.284539			
51	195428.490645	452923.590895			
53	196742.181506	452876.787690			
55	198055.872368	452829.984484			
57	199373.610115	452783.037099			
59	200691.347863	452736.089714			
60	200683.694655	453176.048316			
69	200670.265415	453956.443778			
71	195405.482655	454234.573674			
73	196719.570081	454225.620506			
75	198033.657507	454216.667338			
77	199350.106352	454194.234152			
78	200220.550744	454179.401187			
79	200666.559496	454171.800894			
80	200644.696706	455442.283896			
81	200647.226979	455295.245567			
91	195382.474664	455545.556453			
93	196696.958655	455574.453322			
95	198011.442647	455603.350191			
97	199326.602588	455605.431254			
99	200641.762529	455607.512317			
100	200184.528109	454197.260318			
101	199474.700243	454394.874710			
102	199516.061693	455214.834354			
103	200545.929022	455029.866150			

START				11	195464.175	450311.153
11	INV N	4-58-10.2 W	2645.666	15	198099.896	450081.971
15	INV N	4-52-12.2 W	2632.526	19	200722.918	449858.479
19	INV S	89-22-17.2 E	2877.784	59	200691.348	452736.090
59	INV S	89-00-12.3 E	440.025	60	200683.695	453176.048
60	INV S	89-00-50.9 E	2266.571	80	200644.697	455442.284
80	INV S	88-58-57.5 E	165.254	99	200641.763	455607.512
99	INV S	0-05-26.4 W	2630.323	95	198011.443	455603.350
95	INV S	1-15-33.7 W	2629.603	91	195382.475	455545.556
91	INV N	88-59-40.4 W	2622.369	51	195428.491	452923.591
51	INV N	89-13-02.7 W	2612.681	11	195464.175	450311.153

START				51	195428.491	452923.591
51	INV N	2-02-25.5 W	2629.049	55	198055.872	452829.984
55	INV N	2-02-25.5 W	2637.148	59	200691.348	452736.090

START				15	198099.896	450081.971
15	INV S	89-04-55.9 E	2748.366	55	198055.872	452829.984
55	INV S	89-04-55.9 E	2773.722	95	198011.443	455603.350

POINT-POINT ANGLES								
ANGLE	51 -	11 -	15:	C.W.	264-14-52.5	C.C.W.	95-45-07.5	2645.666
ANGLE	11 -	15 -	19:	C.W.	180-05-58.0	C.C.W.	179-54-02.0	2632.526
ANGLE	15 -	19 -	59:	C.W.	275-29-55.1	C.C.W.	84-30-04.9	2877.784
ANGLE	19 -	59 -	60:	C.W.	180-22-04.8	C.C.W.	179-37-55.2	440.025
ANGLE	59 -	60 -	80:	C.W.	179-59-21.4	C.C.W.	180-00-38.6	2266.571
ANGLE	60 -	80 -	99:	C.W.	180-01-53.4	C.C.W.	179-58-06.6	165.254
ANGLE	80 -	99 -	95:	C.W.	269-04-23.9	C.C.W.	90-55-36.1	2630.323
ANGLE	99 -	95 -	91:	C.W.	181-10-07.3	C.C.W.	178-49-52.7	2629.603
ANGLE	95 -	91 -	51:	C.W.	269-44-45.9	C.C.W.	90-15-14.1	2622.369
ANGLE	91 -	51 -	11:	C.W.	179-46-37.7	C.C.W.	180-13-22.3	2612.681