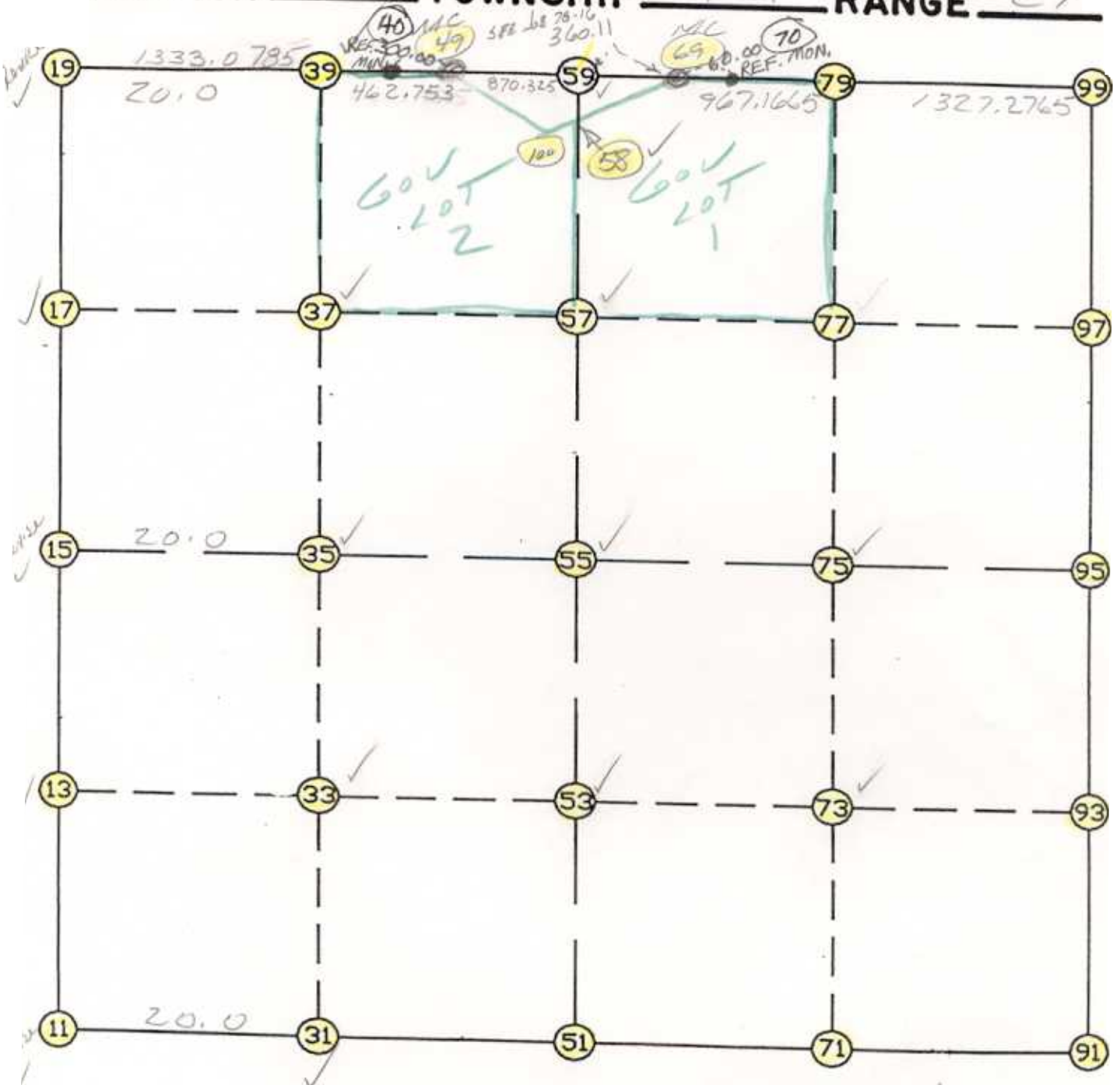


WRIGHT COUNTY SURVEYORS OFFICE

Public Works Building  
Buffalo, Minn. 55313

SECTION 30 TOWNSHIP 121 RANGE 27



REMARKS

LINE SET FROM EXHIBIT OF PLAT  
180NS SFB 78-16

THE INFORMATION SHOWN HEREON IS A COMPILATION OF WRIGHT COUNTY RECORDS AND IS INTENDED TO BE USED FOR COMPARISON PURPOSES ONLY. THE COUNTY IS NOT RESPONSIBLE FOR ANY INACCURACIES HEREIN CONTAINED.

## Description: COUNTY COORDINATES SECTION 30 T121 R27

# of chars. in point descr.: 10

FROM TYPE	BEARING	DISTANCE	TO	NORTHING	EASTING
-----------	---------	----------	----	----------	---------

## LIST POINTS

POINT	NORTHING	EASTING	ELEVATION	DESCR
11	200848.890000	434521.030000		
13	202168.675000	434517.310000		
15	203488.460000	434513.590000		
17	204814.590000	434515.605000		
19	206140.720000	434517.620000		
31	200848.108797	435838.445646		
33	202168.291387	435839.988247		
35	203488.473976	435841.530847		
37	204822.840238	435846.135033		
39	206144.136509	435850.694122		
49	206145.322487	436313.446069		
51	200847.327594	437155.861292		
53	202167.907773	437162.666493		
55	203488.487952	437169.471694		
57	204831.088772	437176.390371		
58	206051.324354	437182.678477		
59	206173.689591	437183.309048		
69	206185.426900	437543.227716		
71	200840.655802	438467.837186		
73	202164.578836	438479.910609		
75	203488.501871	438491.984032		
77	204819.074749	438500.988984		
79	206160.209906	438510.065418		
91	200833.984009	439779.813080		
93	202161.249900	439797.154725		
95	203488.515790	439814.496370		
97	204807.059766	439825.693500		
99	206125.603743	439836.890631		
100	205923.238579	436838.305981		

## START

11	INV N	0-09-41.4	W	2639.580	11	200848.890	434521.030
15	INV N	0-05-13.4	E	2652.263	15	203488.460	434513.590
19	INV N	89-51-11.4	E	1795.832	19	206140.720	434517.620
49	INV N	88-07-55.9	E	870.325	49	206145.322	436313.446
59	INV N	88-07-55.9	E	360.110	59	206173.690	437183.309
69	INV S	88-30-21.4	E	2294.443	69	206185.427	437543.228
99	INV S	0-29-11.6	W	2637.183	99	206125.604	439836.891
95	INV S	0-44-54.8	W	2654.758	95	203488.516	439814.496
91	INV N	89-42-31.1	W	2623.986	91	200833.984	439779.813
51	INV N	89-57-57.7	W	2634.832	51	200847.328	437155.861

## START

51	INV N	0-17-42.9	E	2641.195	51	200847.328	437155.861
55	INV N	0-17-42.9	E	2685.237	55	203488.488	437169.472

## START

15	INV N	89-59-57.8	E	2655.882	15	203488.460	434513.590
55	INV N	89-59-57.8	E	2645.025	55	203488.488	437169.472
					95	203488.516	439814.496

## POINT-POINT ANGLES

ANGLE	51 -	11 -	15:	C.W.	269-48-16.3	C.C.W.	90-11-43.7	2639.580
ANGLE	11 -	15 -	19:	C.W.	180-14-54.8	C.C.W.	179-45-05.2	2652.263
ANGLE	15 -	19 -	49:	C.W.	269-45-58.0	C.C.W.	90-14-02.0	1795.832
ANGLE	19 -	49 -	59:	C.W.	178-16-44.5	C.C.W.	181-43-15.5	870.325
ANGLE	49 -	59 -	69:	C.W.	180-00-00.0	C.C.W.	180-00-00.0	360.110
ANGLE	59 -	69 -	99:	C.W.	183-21-42.7	C.C.W.	176-38-17.3	2294.443
ANGLE	69 -	99 -	95:	C.W.	268-59-33.0	C.C.W.	91-00-27.0	2637.183
ANGLE	99 -	95 -	91:	C.W.	180-15-43.3	C.C.W.	179-44-16.7	2654.758
ANGLE	95 -	91 -	51:	C.W.	269-32-34.1	C.C.W.	90-27-25.9	2623.986
ANGLE	91 -	51 -	11:	C.W.	179-44-33.4	C.C.W.	180-15-26.6	2634.832