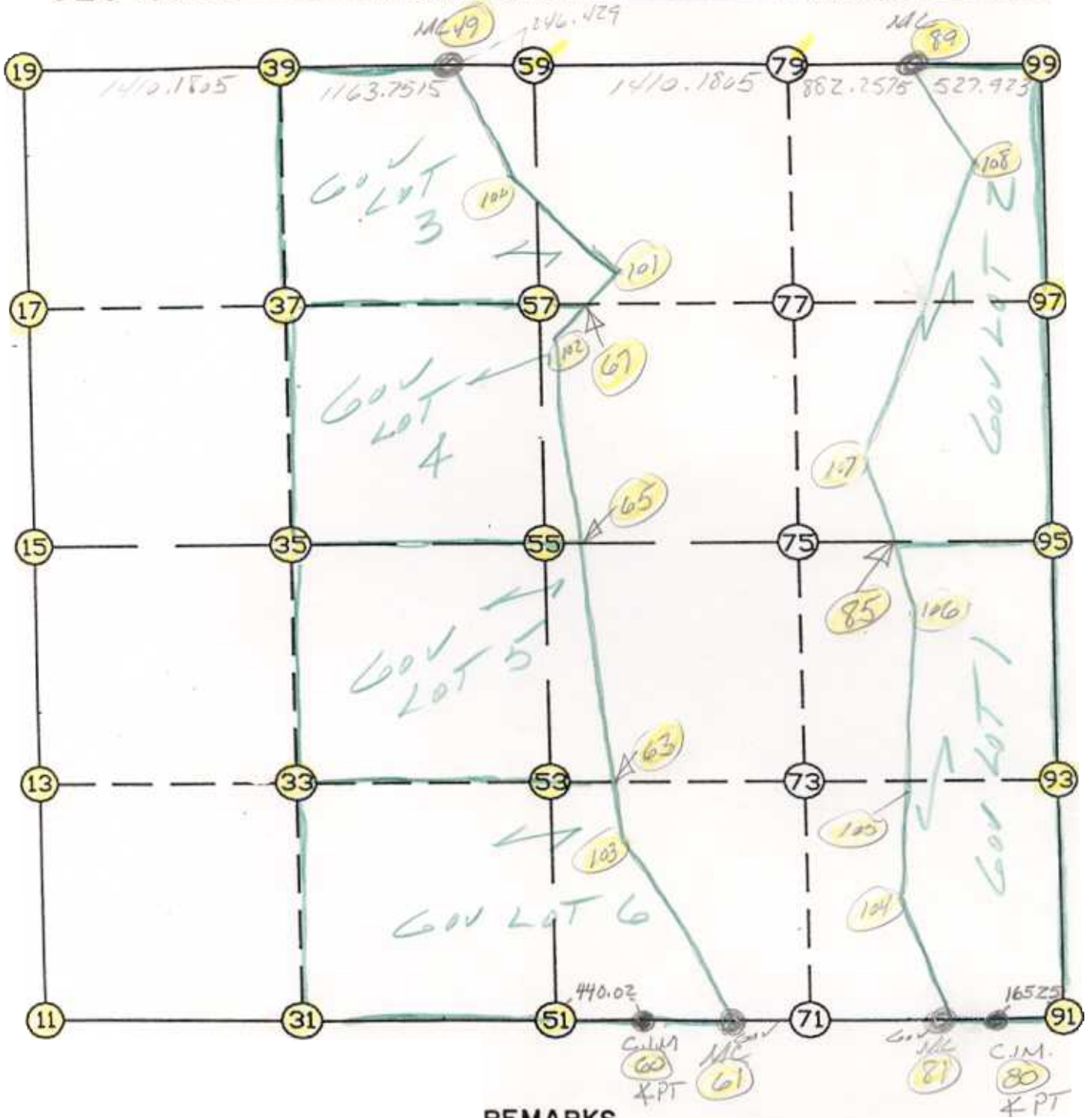


WRIGHT COUNTY SURVEYORS OFFICE

Public Works Building
Buffalo, Minn. 55313

SECTION 27 TOWNSHIP 121 RANGE 27



POSITION FOR MID MIDWAY BETWEEN SECTION CORNERS

THE INFORMATION SHOWN HEREON IS A COMPILATION OF WRIGHT COUNTY RECORDS AND IS INTENDED TO BE USED FOR COMPARISON PURPOSES ONLY. THE COUNTY IS NOT RESPONSIBLE FOR ANY INACCURACIES HEREIN CONTAINED.

COGO =====

Tuesday October 17, 1995

3:41 PM

Coordinate File Name: SEC-27.CRD Lowest pt #: 1 Highest pt #: 108

Job # : 95-93

Description: COUNTY COORDINATES SECTION 27 T121 R27

of chars. in point descr.: 10

FROM TYPE	BEARING	DISTANCE	TO	NORTHING	EASTING
-----------	---------	----------	----	----------	---------

LIST POINTS	NORTHING	EASTING	ELEVATION	DESCR
-------------	----------	---------	-----------	-------

11	200722.918038	449858.479363		
13	202031.638735	449893.625377		
15	203340.359431	449928.771391		
17	204669.325676	449983.917455		
19	205998.291920	450039.063520		
31	200707.132950	451297.284539		
33	202015.661160	451330.128638		
35	203324.189370	451362.972737		
37	204653.524719	451406.066165		
39	205982.859485	451449.159574		
49	205970.123862	452612.841872		
51	200691.347863	452736.089714		
53	201999.683585	452766.631899		
55	203308.019308	452797.174083		
57	204637.723759	452828.215106		
59	205967.428211	452859.256128		
60	200683.694655	453176.048316		
61	200670.265415	453956.443778		
63	201990.376278	453418.054961		
65	203304.187955	453136.995405		
67	204632.854031	453266.798128		
79	205952.002452	454269.352256		
80	200644.696706	455442.283896		
81	200647.226979	455295.245567		
85	203282.183587	455088.669660		
89	205942.351562	455151.557369		
91	200641.762529	455607.512317		
93	201958.876480	455622.741522		
95	203275.990432	455637.970728		
97	204606.295861	455658.710027		
99	205936.601291	455679.449326		
100	205147.773620	452890.232494		
101	204788.678623	453471.020327		
102	204361.266374	452910.857979		
103	201701.814362	453479.786094		
104	201246.812045	455024.102540		
105	201785.412950	455010.140773		
106	203050.720286	455168.647350		
107	203925.337614	454866.440161		
108	205284.214497	455259.771924		

START					11	200722.918	449858.479	
11	INV	N	1-32-18.0	E	2618.385	15	203340.359	449928.771
15	INV	N	2-22-34.1	E	2660.220	19	205998.292	450039.064
19	INV	S	89-22-22.7	E	2573.932	49	205970.124	452612.842
49	INV	S	89-22-23.7	E	246.429	59	205967.428	452859.256
59	INV	S	89-22-23.7	E	2292.438	89	205942.352	455151.557
89	INV	S	89-22-33.3	E	527.923	99	205936.601	455679.449
99	INV	S	0-53-35.4	W	2660.934	95	203275.990	455637.971
95	INV	S	0-39-44.8	W	2634.404	91	200641.763	455607.512
91	INV	N	88-58-57.5	W	165.254	80	200644.697	455442.284
80	INV	N	89-00-50.9	W	147.060	81	200647.227	455295.246
81	INV	N	89-00-50.9	W	1339.000	61	200670.265	453956.444
61	INV	N	89-00-50.9	W	780.511	60	200683.695	453176.048
60	INV	N	89-00-12.3	W	440.025	51	200691.348	452736.090
51	INV	N	89-22-17.2	W	2877.784	11	200722.918	449858.479

START					51	200691.348	452736.090	
51	INV	N	1-20-14.2	E	2617.384	55	203308.019	452797.174
55	INV	N	1-20-14.2	E	2660.133	59	205967.428	452859.256

START					15	203340.359	449928.771	
15	INV	S	89-21-14.5	E	2868.585	55	203308.019	452797.174
55	INV	S	89-21-14.5	E	2840.977	95	203275.990	455637.971

POINT-POINT ANGLES

ANGLE	51	-	11	-	15:	C. W.	270-54-35.1	C. C. W.	89-05-24.9	2618.385
ANGLE	11	-	15	-	19:	C. W.	180-50-16.2	C. C. W.	179-09-43.8	2660.220
ANGLE	15	-	19	-	49:	C. W.	268-15-03.2	C. C. W.	91-44-56.8	2573.932
ANGLE	19	-	49	-	59:	C. W.	179-59-59.0	C. C. W.	180-00-01.0	246.429
ANGLE	49	-	59	-	89:	C. W.	180-00-00.0	C. C. W.	180-00-00.0	2292.438
ANGLE	59	-	89	-	99:	C. W.	179-59-50.4	C. C. W.	180-00-09.6	527.923
ANGLE	89	-	99	-	95:	C. W.	270-16-08.7	C. C. W.	89-43-51.3	2660.934
ANGLE	99	-	95	-	91:	C. W.	179-46-09.5	C. C. W.	180-13-50.5	2634.404
ANGLE	95	-	91	-	80:	C. W.	270-21-17.7	C. C. W.	89-38-42.3	165.254
ANGLE	91	-	80	-	81:	C. W.	179-58-06.6	C. C. W.	180-01-53.4	147.060
ANGLE	80	-	81	-	61:	C. W.	180-00-00.0	C. C. W.	180-00-00.0	1339.000
ANGLE	81	-	61	-	60:	C. W.	180-00-00.0	C. C. W.	180-00-00.0	780.511
ANGLE	61	-	60	-	51:	C. W.	180-00-38.6	C. C. W.	179-59-21.4	440.025
ANGLE	60	-	51	-	11:	C. W.	179-37-55.2	C. C. W.	180-22-04.8	2877.784

Coordinates stored

Tuesday October 17, 1995

3:42 PM