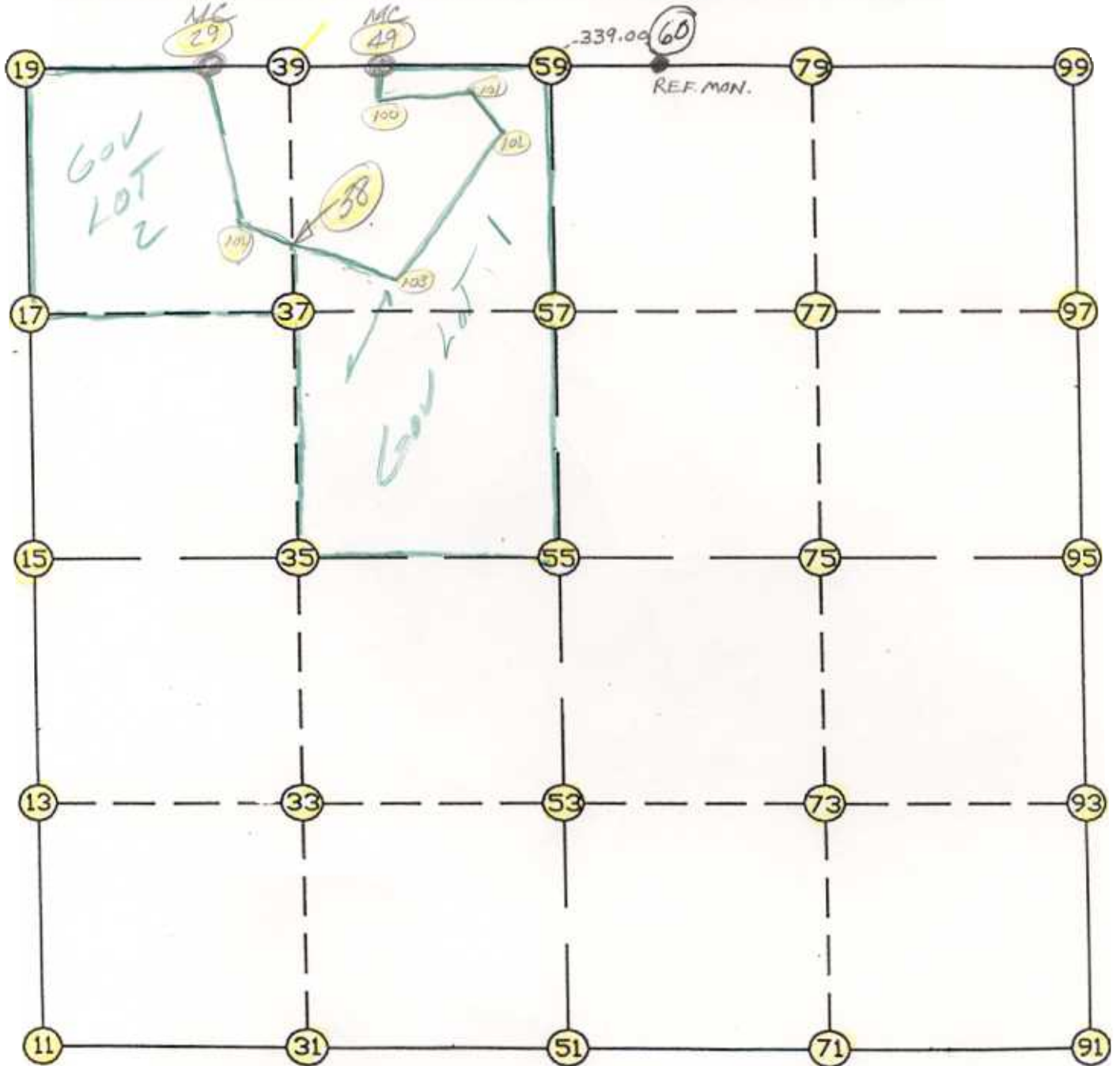


WRIGHT COUNTY SURVEYORS OFFICE

Public Works Building
Buffalo, Minn. 55313

SECTION 25 TOWNSHIP 121 RANGE



REMARKS

THE INFORMATION SHOWN HEREON IS A COMPILATION OF WRIGHT COUNTY RECORDS AND IS INTENDED TO BE USED FOR COMPARISON PURPOSES ONLY. THE COUNTY IS NOT RESPONSIBLE FOR ANY INACCURACIES HEREIN CONTAINED.

COGO =====

Tuesday October 17, 1995

12:55 PM

Coordinate File Name: SEC-25.CRD Lowest pt #: 1 Highest pt #: 104
Job # : 95-93
Description: COUNTY COORDINATES SECTION 25 T121 R27
of chars. in point descr.: 10

FROM TYPE	BEARING	DISTANCE	TO	NORTHING	EASTING

LIST POINTS					
POINT	NORTHING	EASTING	ELEVATION	DESCR	

11	200579.674273	460963.258503			
13	201905.865660	460962.979494			
15	203232.057047	460962.700486			
17	204599.477396	460989.842184			
19	205966.897745	461016.983881			
29	205927.530111	462058.457100			
31	200541.476376	462297.617094			
33	201872.291437	462290.877636			
35	203203.106498	462284.138178			
37	204560.791776	462291.047240			
38	204861.463132	462292.577313			
39	205918.477053	462297.956302			
49	205912.773343	462448.848297			
51	200503.278479	463631.975685			
53	201838.717214	463618.775778			
55	203174.155950	463605.575871			
57	204522.106155	463592.252296			
59	205870.056361	463578.928722			
71	200480.437549	464911.362132			
73	201813.070038	464907.842283			
75	203145.702528	464904.322433			
77	204483.762505	464899.135899			
79	205821.822483	464893.949366			
91	200457.596620	466190.748580			
93	201787.422863	466196.908788			
95	203117.249105	466203.068995			
97	204445.418856	466206.019502			
99	205773.588606	466208.970009			
100	205869.192968	462448.856686			
101	205956.038363	463126.803386			
102	205735.222216	463231.735822			
103	204974.130743	462685.383124			
104	204803.310655	462089.833771			

START					11	200579.674	460963.259
11	INV N	0-00-43.4 W	2652.383	15	203232.057	460962.700	
15	INV N	1-08-13.6 E	2735.379	19	205966.898	461016.984	
19	INV S	87-50-06.9 E	1042.217	29	205927.530	462058.457	
29	INV S	87-50-06.9 E	390.670	49	205912.773	462448.848	
49	INV S	87-50-06.9 E	1130.887	59	205870.056	463578.929	
59	INV S	87-53-57.8 E	2631.810	99	205773.589	466208.970	
99	INV S	0-07-38.2 W	2656.346	95	203117.249	466203.069	
95	INV S	0-15-55.5 W	2659.681	91	200457.597	466190.749	
91	INV N	88-58-37.9 W	2559.181	51	200503.278	463631.976	
51	INV N	88-21-37.0 W	2669.810	11	200579.674	460963.259	
START				51	200503.278	463631.976	
51	INV N	0-33-58.7 W	2671.008	55	203174.156	463605.576	
55	INV N	0-33-58.7 W	2696.032	59	205870.056	463578.929	
START				15	203232.057	460962.700	
15	INV S	88-44-41.8 E	2643.510	55	203174.156	463605.576	
55	INV S	88-44-41.8 E	2598.116	95	203117.249	466203.069	

POINT-POINT ANGLES

ANGLE	51 -	11 -	15:	C.W.	268-20-53.6	C.C.W.	91-39-06.4	2652.383
ANGLE	11 -	15 -	19:	C.W.	181-08-57.0	C.C.W.	178-51-03.0	2735.379
ANGLE	15 -	19 -	29:	C.W.	271-01-39.5	C.C.W.	88-58-20.5	1042.217
ANGLE	19 -	29 -	49:	C.W.	180-00-00.0	C.C.W.	180-00-00.0	390.670
ANGLE	29 -	49 -	59:	C.W.	180-00-00.0	C.C.W.	180-00-00.0	1130.887
ANGLE	49 -	59 -	99:	C.W.	179-56-09.1	C.C.W.	180-03-50.9	2631.810
ANGLE	59 -	99 -	95:	C.W.	268-01-36.0	C.C.W.	91-58-24.0	2656.346
ANGLE	99 -	95 -	91:	C.W.	180-08-17.3	C.C.W.	179-51-42.7	2659.681
ANGLE	95 -	91 -	51:	C.W.	270-45-26.6	C.C.W.	89-14-33.4	2559.181
ANGLE	91 -	51 -	11:	C.W.	180-37-00.9	C.C.W.	179-22-59.1	2669.810

Coordinates stored

Tuesday October 17. 1995

12:56 PM