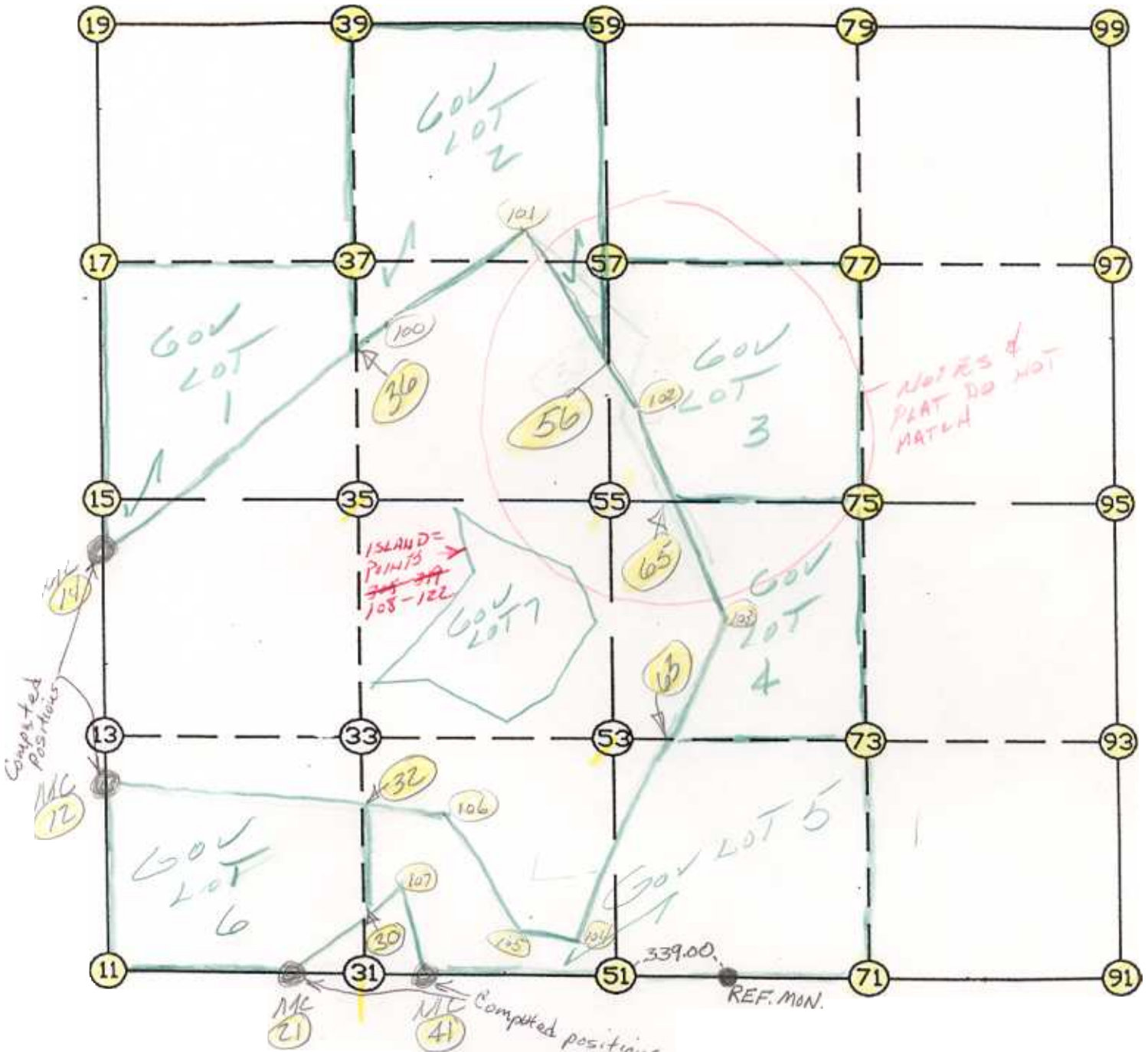


WRIGHT COUNTY SURVEYORS OFFICE

Public Works Building  
Buffalo, Minn. 55313

SECTION 24 TOWNSHIP 121 RANGE 27



REMARKS

THE INFORMATION SHOWN HEREON IS A COMPILATION OF WRIGHT COUNTY RECORDS AND IS INTENDED TO BE USED FOR COMPARISON PURPOSES ONLY. THE COUNTY IS NOT RESPONSIBLE FOR ANY INACCURACIES HEREIN CONTAINED.

Description: COUNTY COORDINATES SECTION 24 T121 R27  
 # of chars. in point descr.: 10

FROM TYPE	BEARING	DISTANCE	TO	NORTHING	EASTING
LIST POINTS					
POINT	NORTHING	EASTING	ELEVATION	DESCR	
11	205966.897745	461016.983881			
12	207132.554538	461039.642650			
14	208381.932516	461063.928843			
15	208542.934308	461067.058497			
17	209887.093722	461077.747848			
19	211231.253136	461088.437198			
21	205927.530111	462058.457100			
30	206122.518737	462302.728776			
31	205918.477053	462297.956302			
32	206953.170371	462322.157471			
35	208487.771276	462358.051330			
36	209374.828327	462373.794220			
37	209844.558061	462382.130666			
39	211201.344847	462406.210001			
41	205912.773343	462448.848297			
51	205870.056361	463578.928722			
53	207151.332302	463613.986443			
55	208432.608244	463649.044163			
56	209464.926606	463677.290014			
57	209802.022401	463686.513484			
59	211171.436559	463723.982805			
63	207138.093940	463947.743064			
65	208407.536559	464235.802429			
71	205821.822483	464893.949366			
73	207099.843847	464912.078506			
75	208377.865211	464930.207647			
77	209733.088475	464951.045890			
79	211088.311739	464971.884132			
91	205773.588606	466208.970009			
93	207048.355393	466210.170570			
95	208323.122179	466211.371131			
97	209664.154550	466215.578296			
99	211005.186920	466219.785460			
100	209542.154718	462594.537468			
101	209703.807462	463524.509233			
102	209101.137796	463909.958045			
103	208138.140554	464362.360991			
104	206170.984801	463546.780968			
105	206339.904273	462975.855806			
106	206910.196117	462629.403747			
107	206257.510502	462471.839485			
108	207813.545000	462746.053000			
109	207571.951704	462639.751583			
110	207280.630276	462484.856437			
111	207044.417291	462367.087085			
112	207062.830896	462577.547227			
113	206956.742503	462890.084267			
114	207095.097890	463091.393270			
115	207455.976990	463458.631762			
116	207753.210226	463315.268862			
117	207885.327550	463240.521657			
118	208067.238256	463067.898538			
119	208340.815271	462883.374320			
120	208410.856622	462741.346520			
121	208135.502409	462810.003654			
122	208003.595028	462805.974204			

11	INV N	1-06-49.0	E	1165.877	11	205966.898	461016.984
12	INV N	1-06-49.0	E	1249.614	12	207132.555	461039.643
14	INV N	1-06-49.0	E	161.032	14	208381.933	461063.929
15	INV N	0-27-20.3	E	2688.404	15	208542.934	461067.058
19	INV S	88-41-59.4	E	2636.224	19	211231.253	461088.437
59	INV S	86-11-20.6	E	2501.334	59	211171.437	463723.983
99	INV S	0-10-47.1	W	2682.078	99	211005.187	466219.785
95	INV S	0-03-14.3	W	2549.535	95	208323.122	466211.371
91	INV N	87-53-57.8	W	2631.810	91	205773.589	466208.970
51	INV N	87-50-06.9	W	1130.887	51	205870.056	463578.929
41	INV N	87-50-06.9	W	390.670	41	205912.773	462448.848
21	INV N	87-50-06.9	W	1042.217	21	205927.530	462058.457
START					11	205966.898	461016.984
51	INV N	1-34-02.3	E	2563.511	51	205870.056	463578.929
55	INV N	1-34-02.3	E	2739.853	55	208432.608	463649.044
START					59	211171.437	463723.983
15	INV S	87-33-11.8	E	2584.342	15	208542.934	461067.058
55	INV S	87-33-11.8	E	2564.665	55	208432.608	463649.044
					95	208323.122	466211.371

POINT-POINT ANGLES

ANGLE	21 -	11 -	12:	C.W.	268-56-55.9	C.C.W.	91-03-04.1	1165.877
ANGLE	11 -	12 -	14:	C.W.	180-00-00.0	C.C.W.	180-00-00.0	1249.614
ANGLE	12 -	14 -	15:	C.W.	180-00-00.0	C.C.W.	180-00-00.0	161.032
ANGLE	14 -	15 -	19:	C.W.	179-20-31.3	C.C.W.	180-39-28.7	2688.404
ANGLE	15 -	19 -	59:	C.W.	270-50-40.3	C.C.W.	89-09-19.7	2636.224
ANGLE	19 -	59 -	99:	C.W.	182-30-38.8	C.C.W.	177-29-21.2	2501.334
ANGLE	59 -	99 -	95:	C.W.	266-22-07.7	C.C.W.	93-37-52.3	2682.078
ANGLE	99 -	95 -	91:	C.W.	179-52-27.2	C.C.W.	180-07-32.8	2549.535
ANGLE	95 -	91 -	51:	C.W.	272-02-48.0	C.C.W.	87-57-12.0	2631.810
ANGLE	91 -	51 -	41:	C.W.	180-03-50.9	C.C.W.	179-56-09.1	1130.887
ANGLE	51 -	41 -	21:	C.W.	180-00-00.0	C.C.W.	180-00-00.0	390.670
ANGLE	41 -	21 -	11:	C.W.	180-00-00.0	C.C.W.	180-00-00.0	1042.217

Coordinates stored

Tuesday October 17, 1995

12:43 PM