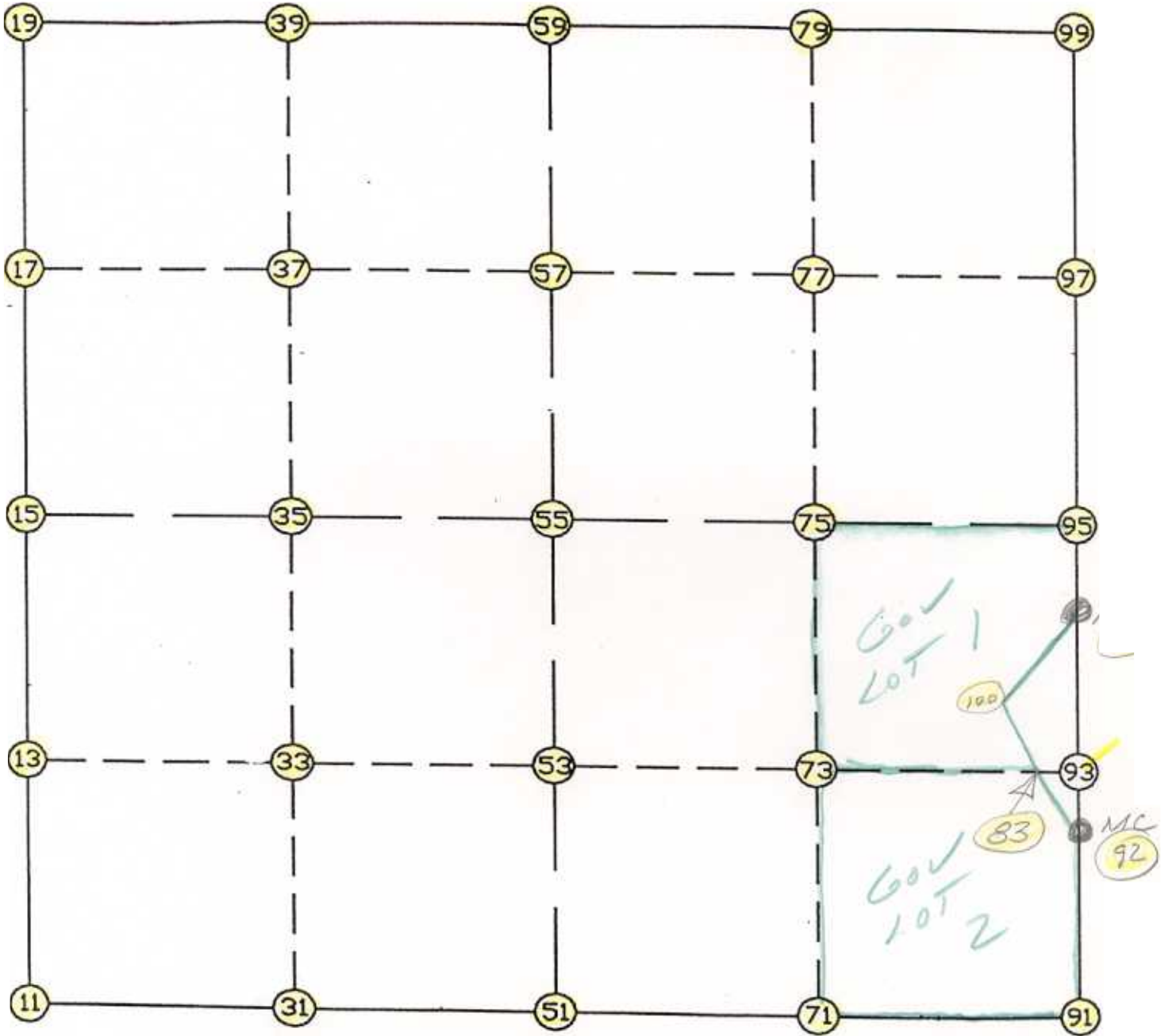


WRIGHT COUNTY SURVEYORS OFFICE

Public Works Building

Buffalo, Minn. 55313

SECTION 23 TOWNSHIP 121 RANGE 27



REMARKS

---

---

---

THE INFORMATION SHOWN HEREON IS A COMPILATION OF WRIGHT COUNTY RECORDS AND IS INTENDED TO BE USED FOR COMPARISON PURPOSES ONLY. THE COUNTY IS NOT RESPONSIBLE FOR ANY INACCURACIES HEREIN CONTAINED.

Coordinate File Name: SEC-23.CRD    Lowest pt #:    1    Highest pt #:    100  
 Job #                    : 95-93  
 Description: COUNTY COORDINATES SECTION 23 T121 R27  
 # of chars. in point descr.: 10

FROM	TYPE	BEARING	DISTANCE	TO	NORTHING	EASTING
LIST POINTS						
POINT					NORTHING	EASTING
11					205936.601291	455679.449326
13					207249.356123	455661.303770
15					208562.110954	455643.158214
17					209881.474686	455616.391089
19					211200.838417	455589.623965
31					205879.075678	457022.952686
33					207218.191676	457012.332543
35					208557.307674	457001.712400
37					209892.639857	456986.797537
39					211227.972040	456971.882675
51					205821.550065	458366.456046
53					207187.027229	458363.361316
55					208552.504394	458360.266586
57					209903.805028	458357.203985
59					211255.105662	458354.141384
71					205894.223905	459691.719964
73					207220.971628	459702.691253
75					208547.719351	459713.662541
77					209895.449375	459717.475916
79					211243.179399	459721.289291
83					207253.829700	460999.158442
91					205966.897745	461016.983881
92					207132.554746	461039.642654
93					207254.916027	461042.021189
94					208381.932723	461063.928847
95					208542.934308	461067.058497
97					209887.093722	461077.747848
99					211231.253136	461088.437198
100					207781.883522	460822.882613

START					11	205936.601	455679.449
11	INV N	0-47-30.9 W	2625.760	15	208562.111	455643.158	
15	INV N	1-09-44.1 W	2639.270	19	211200.838	455589.624	
19	INV N	88-52-31.6 E	2765.050	59	211255.106	458354.141	
59	INV S	89-30-00.7 E	2734.400	99	211231.253	461088.437	
99	INV S	0-27-20.3 W	2688.404	95	208542.934	461067.058	
95	INV S	1-06-49.0 W	161.032	94	208381.933	461063.929	
94	INV S	1-06-49.0 W	1249.614	92	207132.555	461039.643	
92	INV S	1-06-49.0 W	1165.877	91	205966.898	461016.984	
91	INV S	86-51-40.3 W	2654.510	51	205821.550	458366.456	
51	INV N	87-32-53.6 W	2689.469	11	205936.601	455679.449	
START					51	205821.550	458366.456
51	INV N	0-07-47.5 W	2730.961	55	208552.504	458360.267	
55	INV N	0-07-47.5 W	2702.608	59	211255.106	458354.141	
START					15	208562.111	455643.158
15	INV S	89-47-50.7 E	2717.125	55	208552.504	458360.267	
55	INV S	89-47-50.7 E	2706.809	95	208542.934	461067.058	

POINT-POINT ANGLES							
ANGLE	11	-	15	-	19:	C.W. 179-37-46.8	C.C.W. 180-22-13.2    2639.270
ANGLE	15	-	19	-	59:	C.W. 270-02-15.7	C.C.W. 89-57-44.3    2765.050
ANGLE	19	-	59	-	99:	C.W. 181-37-27.7	C.C.W. 178-22-32.3    2734.400
ANGLE	59	-	99	-	95:	C.W. 269-57-21.0	C.C.W. 90-02-39.0    2688.404
ANGLE	99	-	95	-	94:	C.W. 180-39-28.7	C.C.W. 179-20-31.3    161.032
ANGLE	95	-	94	-	92:	C.W. 180-00-00.0	C.C.W. 180-00-00.0    1249.614
ANGLE	94	-	92	-	91:	C.W. 180-00-00.0	C.C.W. 180-00-00.0    1165.877
ANGLE	92	-	91	-	51:	C.W. 265-44-51.3	C.C.W. 94-15-08.7    2654.510
ANGLE	91	-	51	-	11:	C.W. 185-35-26.1	C.C.W. 174-24-33.9    2689.469
ANGLE	51	-	11	-	15:	C.W. 266-45-22.7	C.C.W. 93-14-37.3    2625.760