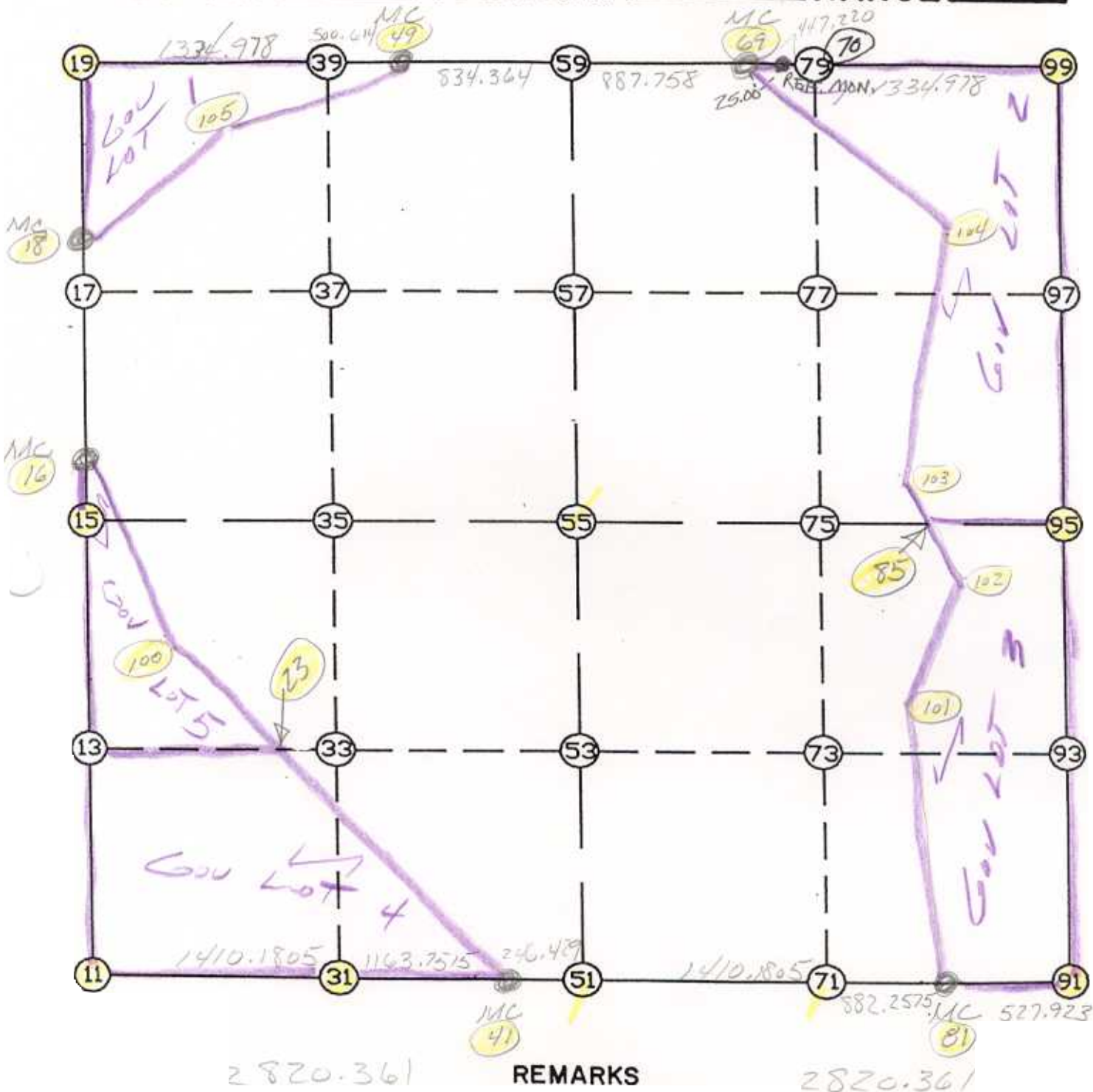


WRIGHT COUNTY SURVEYORS OFFICE

Public Works Building
Buffalo, Minn. 55313

SECTION 22 TOWNSHIP 121 RANGE 27



114 & 514 POSITIONED HAND WAY

THE INFORMATION SHOWN HEREON IS A COMPILATION OF WRIGHT COUNTY RECORDS AND IS INTENDED TO BE USED FOR COMPARISON PURPOSES ONLY. THE COUNTY IS NOT RESPONSIBLE FOR ANY INACCURACIES HEREIN CONTAINED.

COGO =====

Monday October 16, 1995

3:01 PM

Coordinate File Name: SEC-22.CRD Lowest pt #: 1 Highest pt #: 105

Job # : 95-93

Description: COUNTY COORDINATES SECTION 22 T121 R27

of chars. in point descr.: 10

FROM TYPE	BEARING	DISTANCE	TO	NORTHING	EASTING
-----------	---------	----------	----	----------	---------

LIST POINTS

POINT	NORTHING	EASTING	ELEVATION	DESCR
11	205998.291920	450039.063520		
13	207319.195231	450092.406541		
15	208640.098542	450145.749562		
16	208948.667843	450158.131355		
18	210071.315552	450203.181157		
19	211266.175785	450251.121588		
23	207304.526550	451261.887955		
31	205982.859485	451449.159574		
39	211231.453115	451585.647945		
41	205970.123862	452612.841872		
49	211218.432167	452086.093305		
51	205967.428211	452859.256128		
53	207284.298511	452874.597063		
55	208601.168812	452889.937999		
59	211196.735619	452920.175162		
69	211173.650619	453807.633361		
71	205952.002452	454269.352256		
81	205942.351562	455151.557369		
85	208572.461130	454913.565860		
91	205936.601291	455679.449326		
95	208562.110954	455643.158214		
99	211200.838417	455589.623965		
100	207985.788059	450572.176437		
101	207482.689028	454882.539532		
102	208368.790088	455008.225489		
103	209024.866847	454703.302503		
104	210166.038029	454880.279283		
105	210771.776538	451097.078771		

(6.7)

START					11	205998.292	450039.064	
11	INV	N	2-18-45.2	E	2643.960	15	208640.099	450145.750
15	INV	N	2-17-52.2	E	308.818	16	208948.668	450158.131
16	INV	N	2-17-52.6	E	1123.551	18	210071.316	450203.181
18	INV	N	2-17-51.4	E	1195.822	19	211266.176	450251.122
19	INV	S	88-30-34.5	E	1835.593	49	211218.432	452086.093
49	INV	S	88-30-35.7	E	834.364	59	211196.736	452920.175
59	INV	S	88-30-35.7	E	887.758	69	211173.651	453807.633
69	INV	N	89-07-33.3	E	1782.198	99	211200.838	455589.624
99	INV	S	1-09-44.1	E	2639.270	95	208562.111	455643.158
95	INV	S	0-47-30.9	E	2625.760	91	205936.601	455679.449
91	INV	N	89-22-33.3	W	527.923	81	205942.352	455151.557
81	INV	N	89-22-23.7	W	2292.438	51	205967.428	452859.256
51	INV	N	89-22-23.7	W	246.429	41	205970.124	452612.842
41	INV	N	89-22-22.7	W	2573.932	11	205998.292	450039.064

START					51	205967.428	452859.256	
51	INV	N	0-40-02.8	E	2633.919	55	208601.169	452889.938
55	INV	N	0-40-02.8	E	2595.743	59	211196.736	452920.175

START					15	208640.099	450145.750	
15	INV	S	89-11-14.1	E	2744.465	55	208601.169	452889.938
55	INV	S	89-11-14.1	E	2753.497	95	208562.111	455643.158

POINT-POINT ANGLES

ANGLE	41	-	11	-	15:	C.W.	271-41-07.9	C.C.W.	88-18-52.1	2643.960
ANGLE	11	-	15	-	16:	C.W.	179-59-07.0	C.C.W.	180-00-53.0	308.818
ANGLE	15	-	16	-	18:	C.W.	180-00-00.4	C.C.W.	179-59-59.6	1123.551
ANGLE	16	-	18	-	19:	C.W.	179-59-58.8	C.C.W.	180-00-01.2	1195.822
ANGLE	18	-	19	-	49:	C.W.	269-11-34.2	C.C.W.	90-48-25.8	1835.593
ANGLE	19	-	49	-	59:	C.W.	179-59-58.7	C.C.W.	180-00-01.3	834.364
ANGLE	49	-	59	-	69:	C.W.	180-00-00.0	C.C.W.	180-00-00.0	887.758
ANGLE	59	-	69	-	99:	C.W.	177-38-09.0	C.C.W.	182-21-51.0	1782.198
ANGLE	69	-	99	-	95:	C.W.	269-42-42.6	C.C.W.	90-17-17.4	2639.270
ANGLE	99	-	95	-	91:	C.W.	180-22-13.2	C.C.W.	179-37-46.8	2625.760
ANGLE	95	-	91	-	81:	C.W.	271-24-57.6	C.C.W.	88-35-02.4	527.923
ANGLE	91	-	81	-	51:	C.W.	180-00-09.6	C.C.W.	179-59-50.4	2292.438
ANGLE	81	-	51	-	41:	C.W.	180-00-00.0	C.C.W.	180-00-00.0	246.429
ANGLE	51	-	41	-	11:	C.W.	180-00-01.0	C.C.W.	179-59-59.0	2573.932

Coordinates stored

Monday October 16, 1995

3:03 PM

15