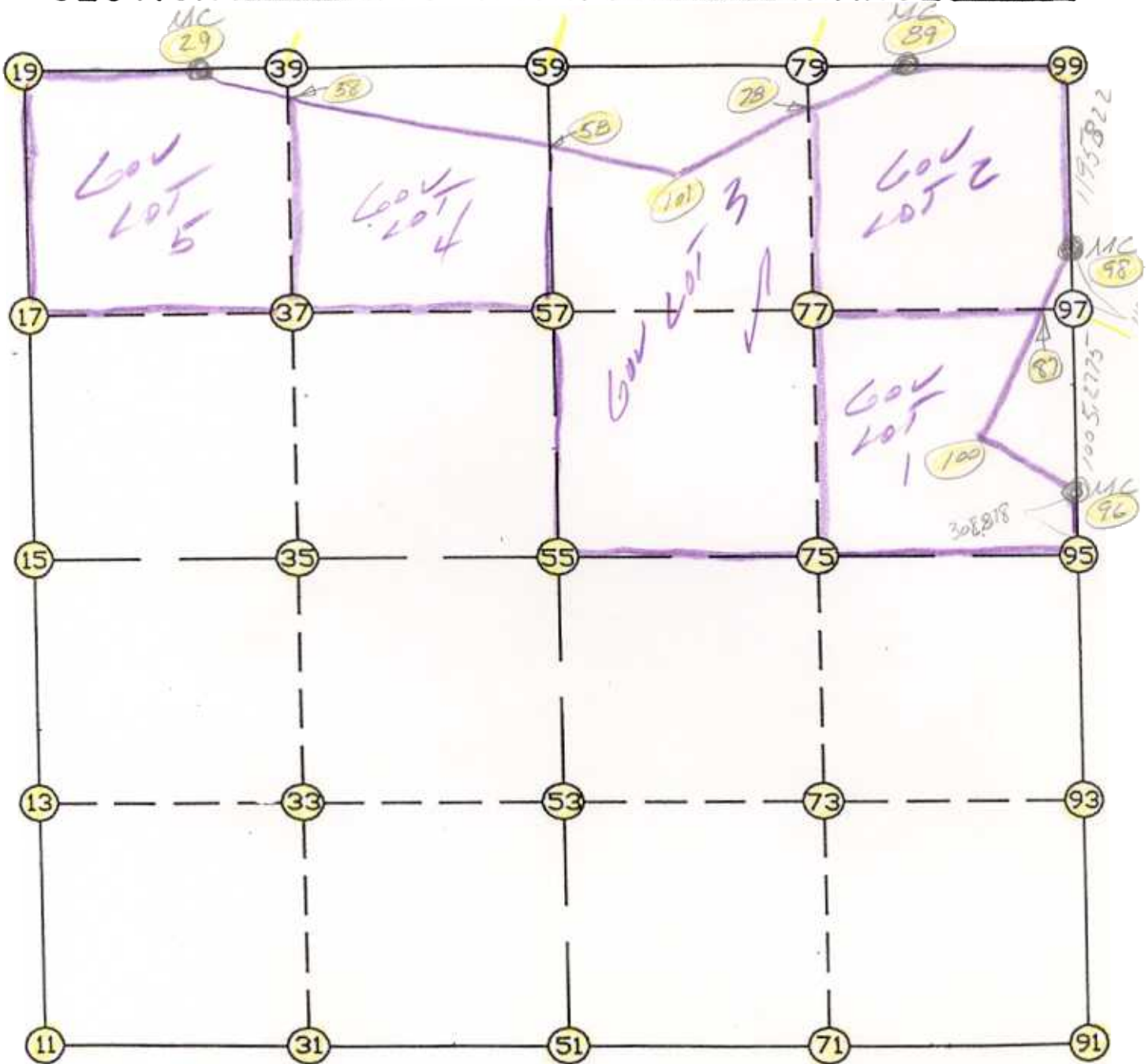


WRIGHT COUNTY SURVEYORS OFFICE

Public Works Building  
Buffalo, Minn. 55313

SECTION 21 TOWNSHIP 121 RANGE 27



REMARKS

MARK POSITIONED MIDWAY

THE INFORMATION SHOWN HEREON IS A COMPILATION OF WRIGHT COUNTY RECORDS AND IS INTENDED TO BE USED FOR COMPARISON PURPOSES ONLY. THE COUNTY IS NOT RESPONSIBLE FOR ANY INACCURACIES HEREIN CONTAINED.

COGO =====

Monday October 16, 1995

2:05 PM

Coordinate File Name: SEC-21.CRD    Lowest pt #:    1    Highest pt #:    101  
Job #                : 95-93  
Description: COUNTY COORDINATES SECTION 21 T121 R27  
# of chars. in point descr.: 10

FROM TYPE	BEARING	DISTANCE	TO	NORTHING	EASTING
LIST POINTS					
POINT	NORTHING	EASTING	ELEVATION	DESCR	
11	206050.315783	445137.020153			
13	207372.569665	445145.347565			
15	208694.823547	445153.674976			
17	210014.616651	445155.960825			
19	211334.409754	445158.246673			
29	211320.336494	446208.652401			
31	206029.351700	446398.982866			
33	207355.155988	446408.640250			
35	208680.960276	446418.297634			
37	209999.155769	446424.881518			
38	211241.440318	446431.086256			
39	211317.351262	446431.465402			
51	206008.387618	447660.945580			
53	207337.742312	447671.932936			
55	208667.097006	447682.920293			
57	209983.694888	447693.802212			
58	210791.193998	447700.476338			
59	211300.292770	447704.684131			
71	206003.339769	448850.004550			
73	207328.468771	448882.169739			
75	208653.597774	448914.334927			
77	209968.416046	448946.118894			
78	211011.013125	448971.322279			
79	211283.234277	448977.902860			
87	209953.818031	450142.632163			
89	211279.182866	449280.293727			
91	205998.291920	450039.063520			
93	207319.195231	450092.406541			
95	208640.098542	450145.749562			
96	208948.667843	450158.131355			
97	209953.137164	450198.438874			
98	210071.315552	450203.181157			
99	211266.175785	450251.121588			
100	209388.470769	449851.296583			
101	210534.971246	448422.851194			

START					11	206050.316	445137.020	
11	INV	N	0-21-39.0	E	2644.560	15	208694.824	445153.675
15	INV	N	0-05-57.2	E	2639.590	19	211334.410	445158.247
19	INV	S	89-13-56.6	E	1050.500	29	211320.336	446208.652
29	INV	S	89-13-56.6	E	1496.166	59	211300.293	447704.684
59	INV	S	89-13-56.6	E	1575.751	89	211279.183	449280.294
89	INV	S	89-13-56.6	E	970.915	99	211266.176	450251.122
99	INV	S	2-17-51.4	W	1195.822	98	210071.316	450203.181
98	INV	S	2-17-52.6	W	1123.551	96	208948.668	450158.131
96	INV	S	2-17-52.2	W	308.818	95	208640.099	450145.750
95	INV	S	2-18-45.2	W	2643.960	91	205998.292	450039.064
91	INV	N	89-45-24.4	W	2378.139	51	206008.388	447660.946
51	INV	N	89-02-53.8	W	2524.274	11	206050.316	445137.020

START					51	206008.388	447660.946	
51	INV	N	0-28-24.8	E	2658.800	55	208667.097	447682.920
55	INV	N	0-28-24.8	E	2633.286	59	211300.293	447704.684
START					15	208694.824	445153.675	
15	INV	S	89-22-18.9	E	2529.397	55	208667.097	447682.920
55	INV	S	89-22-18.9	E	2462.977	95	208640.099	450145.750

POINT-POINT ANGLES

ANGLE	51	-	11	-	15:	C.W.	269-24-32.8	C.C.W.	90-35-27.2	2644.560
ANGLE	11	-	15	-	19:	C.W.	179-44-18.2	C.C.W.	180-15-41.8	2639.590
ANGLE	15	-	19	-	29:	C.W.	270-40-06.1	C.C.W.	89-19-53.9	1050.500
ANGLE	19	-	29	-	59:	C.W.	180-00-00.0	C.C.W.	180-00-00.0	1496.166
ANGLE	29	-	59	-	89:	C.W.	180-00-00.0	C.C.W.	180-00-00.0	1575.751
ANGLE	59	-	89	-	99:	C.W.	180-00-00.0	C.C.W.	180-00-00.0	970.915
ANGLE	89	-	99	-	98:	C.W.	271-31-48.0	C.C.W.	88-28-12.0	1195.822
ANGLE	99	-	98	-	96:	C.W.	180-00-01.2	C.C.W.	179-59-58.8	1123.551
ANGLE	98	-	96	-	95:	C.W.	179-59-59.6	C.C.W.	180-00-00.4	308.818
ANGLE	96	-	95	-	91:	C.W.	180-00-53.0	C.C.W.	179-59-07.0	2643.960
ANGLE	95	-	91	-	51:	C.W.	267-55-50.4	C.C.W.	92-04-09.6	2378.139
ANGLE	91	-	51	-	11:	C.W.	180-42-30.6	C.C.W.	179-17-29.4	2524.274

Coordinates stored

Monday October 16, 1995

2:06 PM