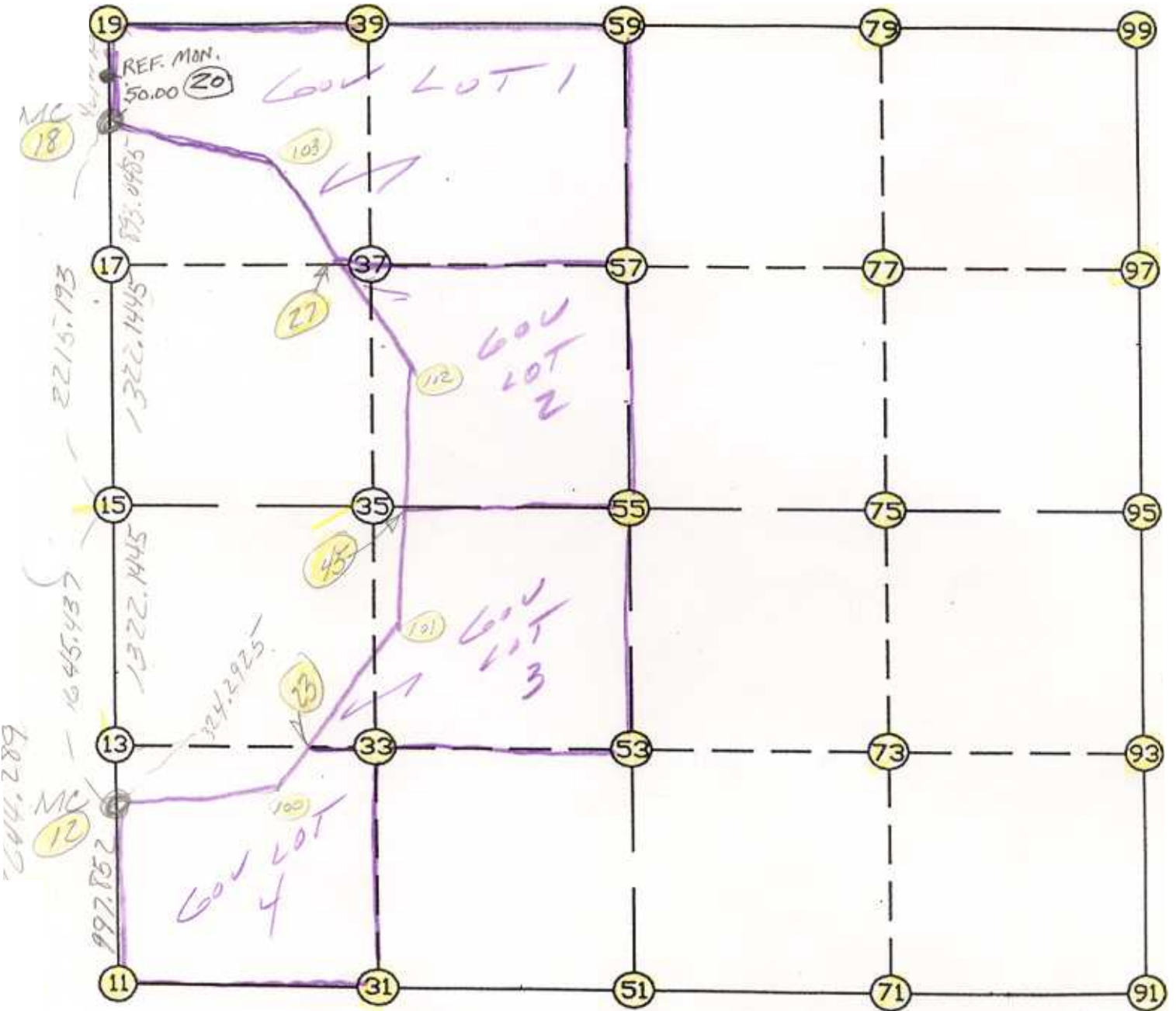


WRIGHT COUNTY SURVEYORS OFFICE

Public Works Building  
Buffalo, Minn. 55313

SECTION 20 TOWNSHIP 2 RANGE 27



REMARKS

---

---

---

THE INFORMATION SHOWN HEREON IS A COMPILATION OF WRIGHT COUNTY RECORDS AND IS INTENDED TO BE USED FOR COMPARISON PURPOSES ONLY. THE COUNTY IS NOT RESPONSIBLE FOR ANY INACCURACIES HEREIN CONTAINED.

=== COGO =====

Monday October 16, 1995

12:08 PM

Coordinate File Name: SEC-20.CRD Lowest pt #: 1 Highest pt #: 103

Job # : 95-93

Description: COUNTY COORDINATES SECTION 20 T121 R27

# of chars. in point descr.: 10

-----  
FROM TYPE            BEARING    DISTANCE    TO        NORTHING        EASTING  
-----

LIST POINTS  
POINT            NORTHING            EASTING            ELEVATION        DESCR  
-----

11	206125.603743	439836.890631		
12	207123.348066	439851.560139		
13	207447.550839	439859.188226		
15	208769.329520	439890.288031		
17	210091.108201	439921.387836		
18	210983.909125	439942.394329		
19	211412.886670	439952.455040		
23	207428.361575	440973.482389		
27	210057.503281	441125.075357		
31	206098.682314	441164.090768		
33	207424.603560	441191.705131		
35	208750.516392	441219.319319		
39	211357.589797	441277.974300		
45	208746.584089	441497.112283		
51	206071.760885	442491.290905		
53	207401.732075	442519.820756		
55	208731.703265	442548.350607		
57	210016.998094	442575.922084		
59	211302.292924	442603.493560		
71	206061.038334	443814.155529		
73	207387.150870	443832.584160		
75	208713.263406	443851.012791		
77	210015.807372	443865.941454		
79	211318.351339	443880.870117		
91	206050.315783	445137.020153		
93	207372.569665	445145.347565		
95	208694.823547	445153.674976		
97	210014.616651	445155.960825		
99	211334.409754	445158.246673		
100	207239.161386	440841.670432		
101	208071.530207	441421.565009		
102	209389.631357	441569.077602		
103	210684.934966	440707.957843		

2

START					11	206125.604	439836.891
11	INV N	0-50-32.4 E	997.852		12	207123.348	439851.560
12	INV N	1-20-52.3 E	1646.437		15	208769.330	439890.288
15	INV N	1-20-52.3 E	2215.193		18	210983.909	439942.394
18	INV N	1-20-36.6 E	429.096		19	211412.887	439952.455
19	INV S	87-36-40.2 E	2653.344		59	211302.293	442603.494
59	INV N	89-16-47.1 E	2554.955		99	211334.410	445158.247
99	INV S	0-05-57.2 W	2639.590		95	208694.824	445153.675
95	INV S	0-21-39.0 W	2644.560		91	206050.316	445137.020
91	INV N	89-32-08.1 W	2645.816		51	206071.761	442491.291
51	INV N	88-50-16.6 W	2654.946		11	206125.604	439836.891

START					51	206071.761	442491.291
51	INV N	1-13-44.0 E	2660.554		55	208731.703	442548.351
55	INV N	1-13-44.0 E	2571.181		59	211302.293	442603.494

START					15	208769.330	439890.288
15	INV S	89-11-20.4 E	2658.329		55	208731.703	442548.351
55	INV S	89-11-20.4 E	2605.585		95	208694.824	445153.675

POINT-POINT ANGLES

ANGLE	51 -	11 -	12:	C.W.	269-40-49.0	C.C.W.	90-19-11.0	997.852
ANGLE	11 -	12 -	15:	C.W.	180-30-19.8	C.C.W.	179-29-40.2	1646.437
ANGLE	12 -	15 -	18:	C.W.	180-00-00.0	C.C.W.	180-00-00.0	2215.193
ANGLE	15 -	18 -	19:	C.W.	179-59-44.3	C.C.W.	180-00-15.7	429.096
ANGLE	18 -	19 -	59:	C.W.	271-02-43.2	C.C.W.	88-57-16.8	2653.344
ANGLE	19 -	59 -	99:	C.W.	176-53-27.3	C.C.W.	183-06-32.7	2554.955
ANGLE	59 -	99 -	95:	C.W.	270-49-10.1	C.C.W.	89-10-49.9	2639.590
ANGLE	99 -	95 -	91:	C.W.	180-15-41.8	C.C.W.	179-44-18.2	2644.560
ANGLE	95 -	91 -	51:	C.W.	270-06-12.8	C.C.W.	89-53-47.2	2645.816
ANGLE	91 -	51 -	11:	C.W.	180-41-51.5	C.C.W.	179-18-08.5	2654.946