

WRIGHT COUNTY SURVEYORS OFFICE

Public Works Building  
Buffalo, Minn. 55313

MC E. LN  
5667

SECTION 17 TOWNSHIP 121 RANGE 27

20  
MC  
N. LN  
5667

MC  
E. LN  
5668

2635.798

2649.617

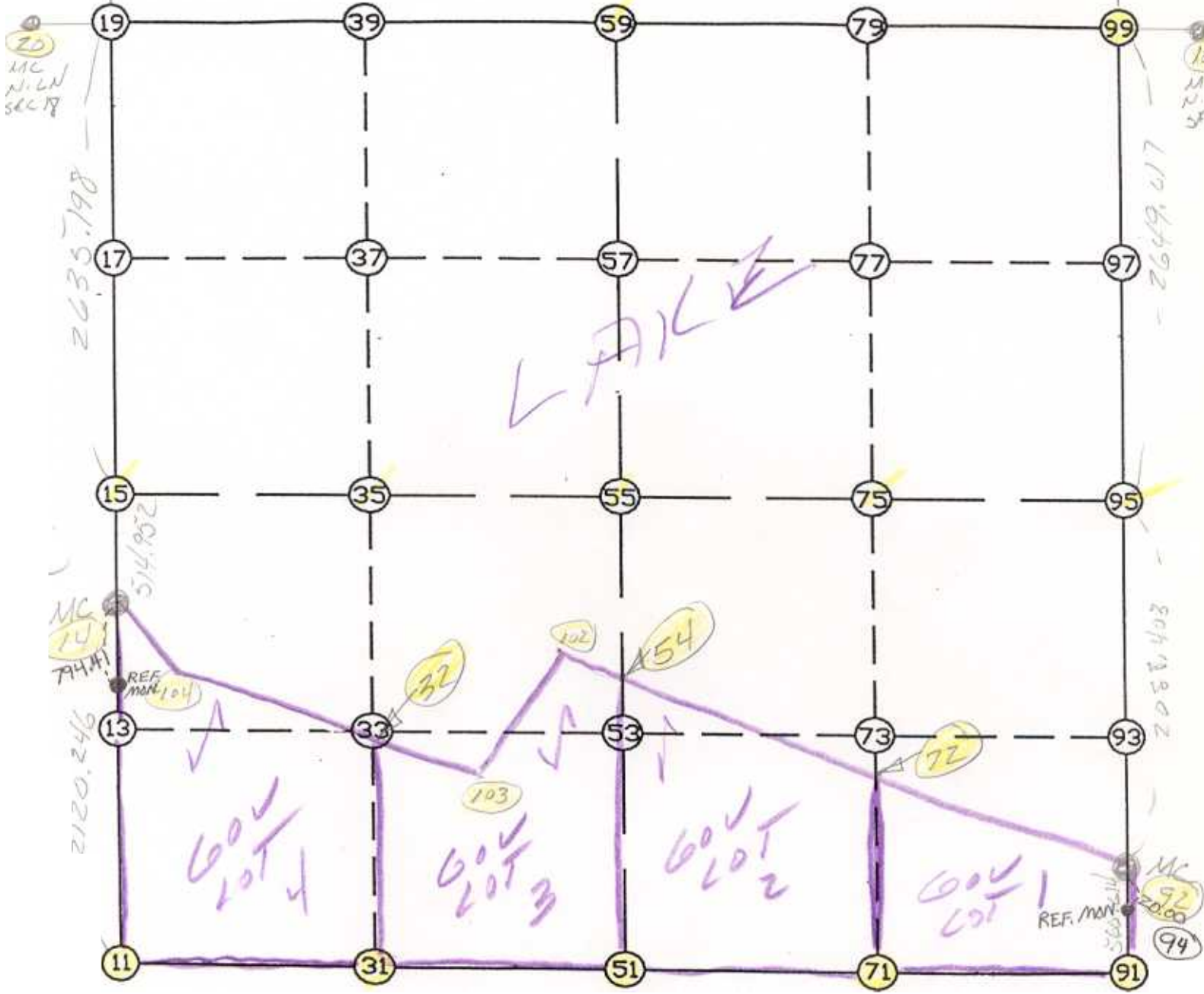
L FAIR

MC  
N. LN  
7944

2081.403

2120.246

MC  
N. LN  
5668  
REF. MON. 104



REMARKS

NE & NW CORNERS AT INTERSECTION STRAIGHT LINES  
BETWEEN M.C.S. - W/4 - N/4 - E/4 AT MID POINT

THE INFORMATION SHOWN HEREON IS A COMPILATION OF WRIGHT COUNTY RECORDS  
AND IS INTENDED TO BE USED FOR COMPARISON PURPOSES ONLY. THE  
COUNTY IS NOT RESPONSIBLE FOR ANY INACCURACIES HEREIN CONTAINED.

Coordinate File Name: SEC-17.CRD    Lowest pt #:    1    Highest pt #:    104  
 Job #                    : 95-93  
 Description: COUNTY COORDINATES SECTION 17 T121 R27  
 # of chars. in point descr.: 10

FROM	TYPE	BEARING	DISTANCE	TO	NORTHING	EASTING
LIST POINTS						
POINT					NORTHING	EASTING
11					211412.886670	439952.455040
14					213530.054753	440066.653605
15					214044.996470	440069.907924
19					216680.141804	440086.561468
20					216703.269790	437618.078309
21					221136.295714	440114.723388
31					211357.589797	441277.974300
32					212715.194525	441314.939366
35					214029.545824	441350.726721
51					211302.292924	442603.493560
54					212862.027939	442619.628078
55					214014.095177	442631.545518
59					216656.041001	442658.874853
71					211318.351339	443880.870117
72					212378.072458	443893.538204
75					213998.637939	443912.910721
91					211334.409754	445158.246673
92					211894.980460	445165.175395
95					213983.180701	445194.275924
99					216631.940197	445231.188239
100					216617.039544	446821.556397
101					218555.757624	445257.997978
102					212975.516460	442320.893625
103					212518.612598	441883.611910
104					213130.627320	440113.174646

START					11	211412.887	439952.455
11	INV N	3-05-15.0	E	2120.246	14	213530.055	440066.654
14	INV N	0-21-43.5	E	514.952	15	214044.996	440069.908
15	INV N	0-21-43.5	E	2635.198	19	216680.142	440086.561
19	INV S	89-27-47.5	E	2572.426	59	216656.041	442658.875
59	INV S	89-27-47.5	E	2572.426	99	216631.940	445231.188
99	INV S	0-47-54.3	W	2649.017	95	213983.181	445194.276
95	INV S	0-47-54.3	W	2088.403	92	211894.980	445165.175
92	INV S	0-42-29.3	W	560.614	91	211334.410	445158.247
91	INV S	89-16-47.1	W	2554.955	51	211302.293	442603.494
51	INV N	87-36-40.2	W	2653.344	11	211412.887	439952.455
START					51	211302.293	442603.494
51	INV N	0-35-33.6	E	2711.947	55	214014.095	442631.546
55	INV N	0-35-33.6	E	2642.087	59	216656.041	442658.875
START					15	214044.996	440069.908
15	INV S	89-18-31.9	E	2561.824	55	214014.095	442631.546
55	INV S	89-18-31.9	E	2562.917	95	213983.181	445194.276

POINT-POINT ANGLES

ANGLE	51	-	11	-	14:	C.W.	270-41-55.2	C.C.W.	89-18-04.8	2120.246
ANGLE	11	-	14	-	15:	C.W.	177-16-28.5	C.C.W.	182-43-31.5	514.952
ANGLE	14	-	15	-	19:	C.W.	180-00-00.0	C.C.W.	180-00-00.0	2635.198
ANGLE	15	-	19	-	59:	C.W.	270-10-29.0	C.C.W.	89-49-31.0	2572.426
ANGLE	19	-	59	-	99:	C.W.	180-00-00.0	C.C.W.	180-00-00.0	2572.426
ANGLE	59	-	99	-	95:	C.W.	270-15-41.8	C.C.W.	89-44-18.2	2649.017
ANGLE	99	-	95	-	92:	C.W.	180-00-00.0	C.C.W.	180-00-00.0	2088.403
ANGLE	95	-	92	-	91:	C.W.	179-54-35.1	C.C.W.	180-05-24.9	560.614
ANGLE	92	-	91	-	51:	C.W.	268-34-17.8	C.C.W.	91-25-42.2	2554.955
ANGLE	91	-	51	-	11:	C.W.	183-06-32.7	C.C.W.	176-53-27.3	2653.344