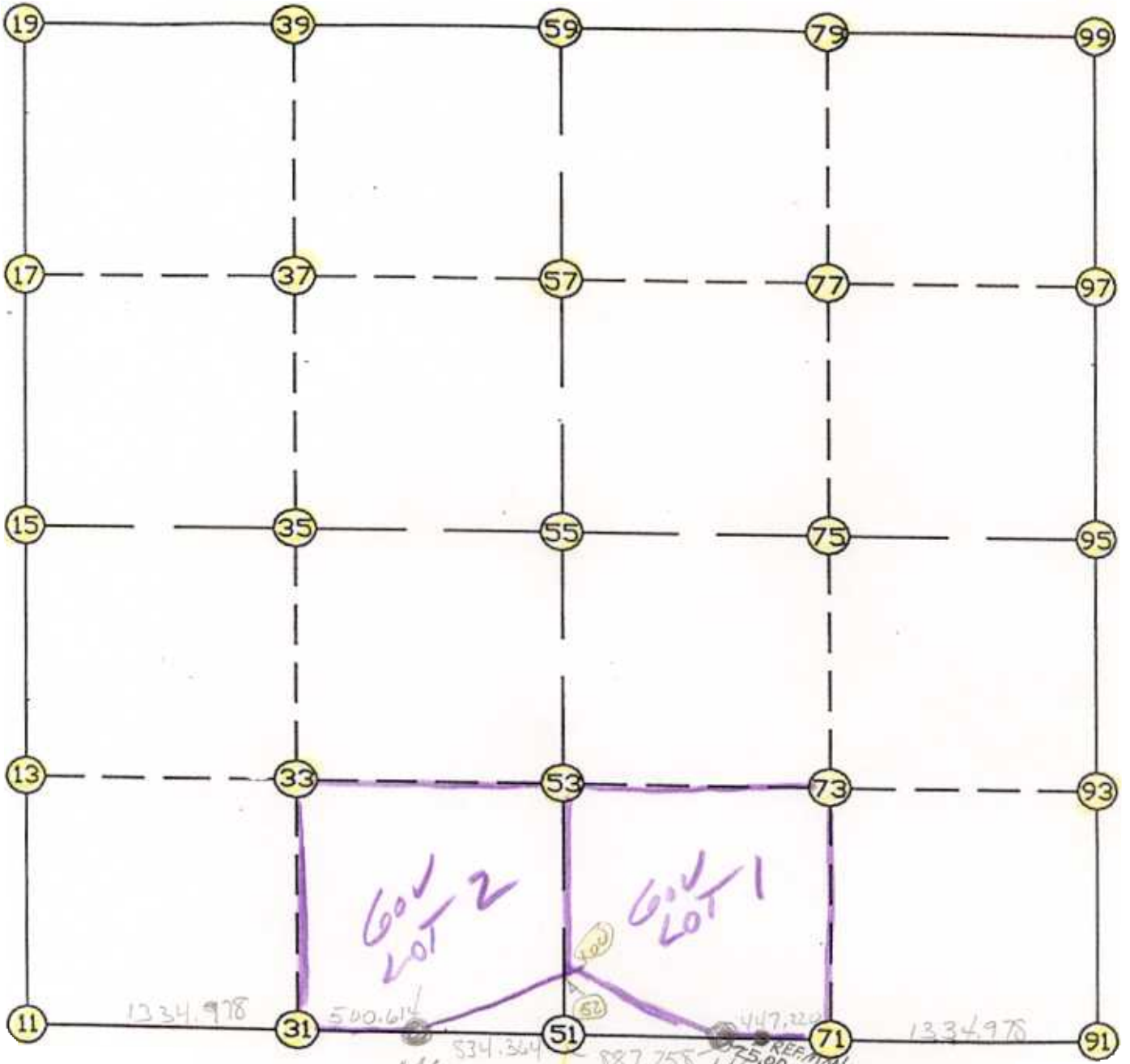


WRIGHT COUNTY SURVEYORS OFFICE

Public Works Building  
Buffalo, Minn. 55313

SECTION 15 TOWNSHIP 121 RANGE 27



2669.9565      REMARKS      2669.9565

5/4 MIDWAY BETWEEN SEE CORNERS

THE INFORMATION SHOWN HEREON IS A COMPILATION OF WRIGHT COUNTY RECORDS AND IS INTENDED TO BE USED FOR COMPARISON PURPOSES ONLY. THE COUNTY IS NOT RESPONSIBLE FOR ANY INACCURACIES HEREIN CONTAINED.

Job # : 95-93

Description: COUNTY COORDINATES SECTION 15 T121 R27

# of chars. in point descr.: 10

| FROM TYPE | BEARING | DISTANCE | TO | NORTHING | EASTING |
|-----------|---------|----------|----|----------|---------|
|-----------|---------|----------|----|----------|---------|

LIST POINTS

| POINT | NORTHING      | EASTING       | ELEVATION | DESCR |
|-------|---------------|---------------|-----------|-------|
| 11    | 211266.175785 | 450251.121588 |           |       |
| 13    | 212503.323185 | 450154.322923 |           |       |
| 15    | 213740.470584 | 450057.524257 |           |       |
| 17    | 215060.245357 | 450105.691052 |           |       |
| 19    | 216380.020130 | 450153.857847 |           |       |
| 31    | 211231.453109 | 451585.648195 |           |       |
| 33    | 212499.952527 | 451519.442659 |           |       |
| 35    | 213768.449356 | 451453.237257 |           |       |
| 37    | 215050.842183 | 451460.265508 |           |       |
| 39    | 216333.235010 | 451467.293759 |           |       |
| 41    | 211218.432167 | 452086.093305 |           |       |
| 51    | 211196.735608 | 452920.175559 |           |       |
| 52    | 211337.931515 | 452916.307132 |           |       |
| 53    | 212496.581868 | 452884.562908 |           |       |
| 55    | 213796.428128 | 452848.950258 |           |       |
| 57    | 215041.439009 | 452814.839964 |           |       |
| 59    | 216286.449890 | 452780.729670 |           |       |
| 61    | 211173.650619 | 453807.633361 |           |       |
| 71    | 211180.473056 | 454254.801569 |           |       |
| 73    | 212511.103325 | 454225.040184 |           |       |
| 75    | 213823.425137 | 454195.688293 |           |       |
| 77    | 215109.735688 | 454170.016222 |           |       |
| 79    | 216396.046239 | 454144.344151 |           |       |
| 91    | 211200.838417 | 455589.623965 |           |       |
| 93    | 212525.630281 | 455566.025146 |           |       |
| 95    | 213850.422146 | 455542.426328 |           |       |
| 97    | 215178.032367 | 455525.192480 |           |       |
| 99    | 216505.642587 | 455507.958632 |           |       |
| 100   | 211350.804103 | 453005.738586 |           |       |

|       |       |              |          |            |            |
|-------|-------|--------------|----------|------------|------------|
| START |       |              | 11       | 211266.176 | 450251.122 |
| 11    | INV N | 4-28-26.1 W  | 2481.857 | 15         | 213740.471 |
| 15    | INV N | 2-05-24.5 E  | 2641.307 | 19         | 216380.020 |
| 19    | INV S | 87-57-35.9 E | 2628.538 | 59         | 216286.450 |
| 59    | INV N | 85-24-17.7 E | 2736.023 | 99         | 216505.643 |
| 99    | INV S | 0-44-37.4 E  | 2655.444 | 95         | 213850.422 |
| 95    | INV S | 1-01-13.9 E  | 2650.004 | 91         | 211200.838 |
| 91    | INV S | 89-07-33.3 W | 1782.198 | 61         | 211173.651 |
| 61    | INV N | 88-30-35.7 W | 887.758  | 51         | 211196.736 |
| 51    | INV N | 88-30-35.7 W | 834.364  | 41         | 211218.432 |
| 41    | INV N | 88-30-34.5 W | 1835.593 | 11         | 211266.176 |
| START |       |              | 51       | 211196.736 | 452920.176 |
| 51    | INV N | 1-34-09.7 W  | 2600.668 | 55         | 213796.428 |
| 55    | INV N | 1-34-09.7 W  | 2490.956 | 59         | 216286.450 |
| START |       |              | 15       | 213740.471 | 450057.524 |
| 15    | INV N | 88-51-05.7 E | 2791.987 | 55         | 213796.428 |
| 55    | INV N | 88-51-05.7 E | 2694.017 | 95         | 213850.422 |

POINT-POINT ANGLES

|       |      |      |     |      |             |        |             |          |
|-------|------|------|-----|------|-------------|--------|-------------|----------|
| ANGLE | 41 - | 11 - | 15: | C.W. | 264-02-08.4 | C.C.W. | 95-57-51.6  | 2481.857 |
| ANGLE | 11 - | 15 - | 19: | C.W. | 186-33-50.6 | C.C.W. | 173-26-09.4 | 2641.307 |
| ANGLE | 15 - | 19 - | 59: | C.W. | 269-56-59.6 | C.C.W. | 90-03-00.4  | 2628.538 |
| ANGLE | 19 - | 59 - | 99: | C.W. | 173-21-53.5 | C.C.W. | 186-38-06.5 | 2736.023 |
| ANGLE | 59 - | 99 - | 95: | C.W. | 273-51-05.0 | C.C.W. | 86-08-55.0  | 2655.444 |
| ANGLE | 99 - | 95 - | 91: | C.W. | 179-43-23.5 | C.C.W. | 180-16-36.5 | 2650.004 |
| ANGLE | 95 - | 91 - | 61: | C.W. | 270-08-47.1 | C.C.W. | 89-51-12.9  | 1782.198 |
| ANGLE | 91 - | 61 - | 51: | C.W. | 182-21-51.0 | C.C.W. | 177-38-09.0 | 887.758  |
| ANGLE | 61 - | 51 - | 41: | C.W. | 180-00-00.0 | C.C.W. | 180-00-00.0 | 834.364  |
| ANGLE | 51 - | 41 - | 11: | C.W. | 180-00-01.3 | C.C.W. | 179-59-58.7 | 1835.593 |