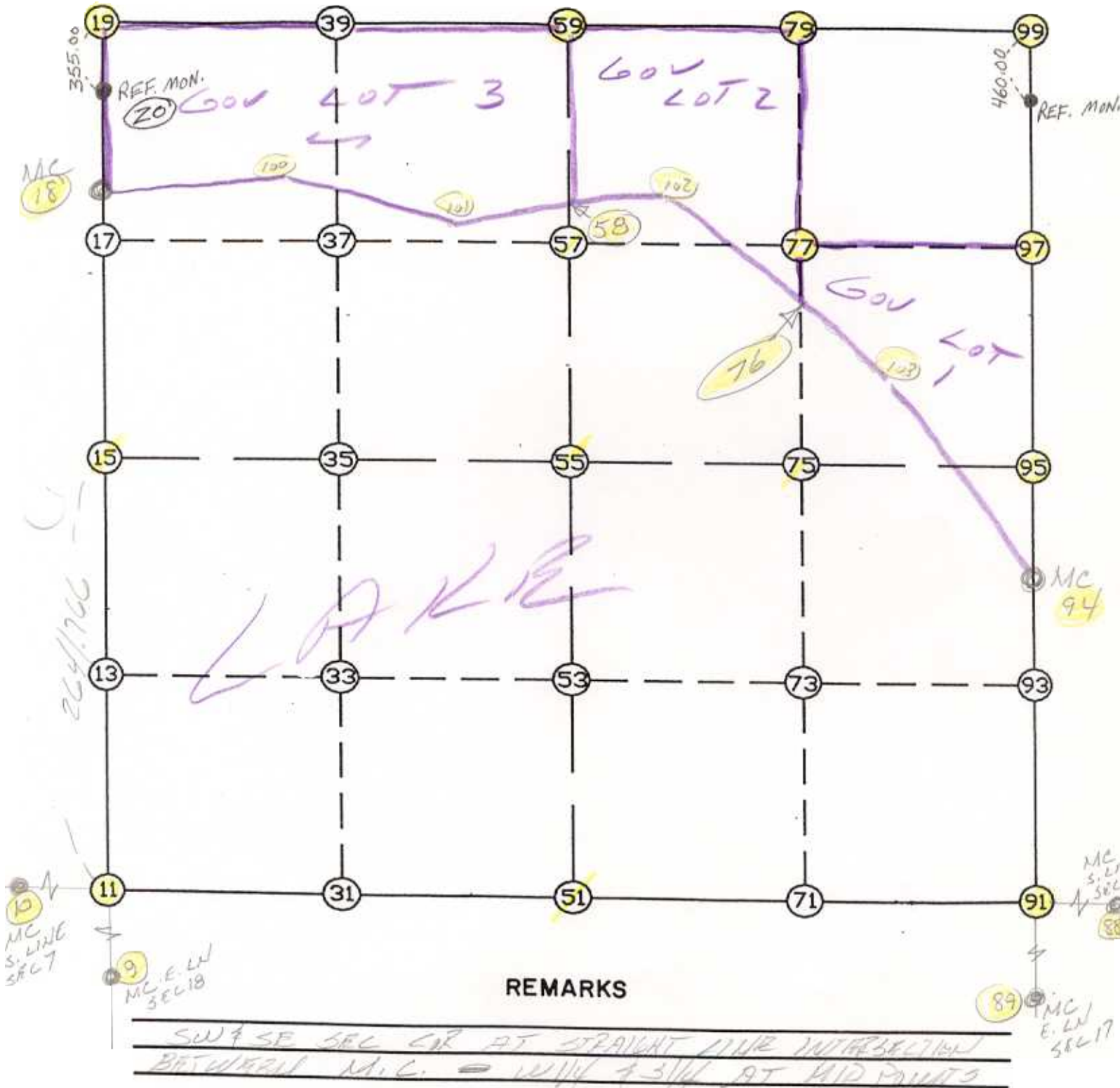


WRIGHT COUNTY SURVEYORS OFFICE

Public Works Building  
Buffalo, Minn. 55313

SECTION 8 TOWNSHIP 121 RANGE 27



THE INFORMATION SHOWN HEREON IS A COMPILATION OF WRIGHT COUNTY RECORDS AND IS INTENDED TO BE USED FOR COMPARISON PURPOSES ONLY. THE COUNTY IS NOT RESPONSIBLE FOR ANY INACCURACIES HEREIN CONTAINED.

Coordinate File Name: SEC-08.CRD    Lowest pt #:    1    Highest pt #:    103  
 Job #                    : 95-93  
 Description: COUNTY COORDINATES SECTION 8 T121 R27  
 # of chars. in point descr.: 10

-----  
 FROM TYPE                    BEARING    DISTANCE                    TO                    NORTHING                    EASTING  
 -----

LIST POINTS	POINT	NORTHING	EASTING	ELEVATION	DESCR
	9	213530.054753	440066.653605		
	10	216703.269790	437618.078309		
	11	216680.141804	440086.561468		
	15	219321.855050	440103.256519		
	18	221136.295714	440114.723388		
	19	221963.027240	440084.347063		
	51	216656.041001	442658.874853		
	55	219284.803434	442699.571395		
	57	220626.232385	442720.338398		
	58	220870.383695	442724.118167		
	59	221967.661336	442741.105402		
	75	219266.540911	443979.279634		
	76	220304.045635	444009.905461		
	77	220628.533774	444019.483940		
	79	221990.526638	444059.688246		
	88	216617.039544	446821.556397		
	89	211894.980460	445165.175395		
	91	216631.940197	445231.188239		
	94	218555.757624	445257.997978		
	95	219248.278388	445258.987873		
	97	220630.835164	445318.629482		
	99	222013.391940	445378.271090		
	100	221147.673265	441219.986082		
	101	220796.171893	442079.762363		
	102	220929.491440	443237.330578		
	103	219916.731851	444488.330447		

START					11	216680.142	440086.561
11	INV N	0-21-43.5 E	2641.766	15	219321.855	440103.257	
15	INV N	0-21-43.5 E	1814.477	18	221136.296	440114.723	
18	INV N	2-06-15.3 W	827.289	19	221963.027	440084.347	
19	INV N	89-54-00.2 E	2656.762	59	221967.661	442741.105	
59	INV N	89-00-23.6 E	2637.562	99	222013.392	445378.271	
99	INV S	2-28-12.5 W	2767.685	95	219248.278	445258.988	
95	INV S	0-04-54.8 W	692.521	94	218555.758	445257.998	
94	INV S	0-47-54.3 W	1924.004	91	216631.940	445231.188	
91	INV N	89-27-47.5 W	2572.426	51	216656.041	442658.875	
51	INV N	89-27-47.5 W	2572.426	11	216680.142	440086.561	
START					51	216656.041	442658.875
51	INV N	0-53-13.0 E	2629.077	55	219284.803	442699.571	
55	INV N	0-53-13.0 E	2683.179	59	221967.661	442741.105	
START					15	219321.855	440103.257
15	INV S	89-10-56.6 E	2596.579	55	219284.803	442699.571	
55	INV S	89-10-56.6 E	2559.677	95	219248.278	445258.988	

POINT-POINT ANGLES

ANGLE	51 -	11 -	15:	C. W.	269-49-31.0	C. C. W.	90-10-29.0	2641.766
ANGLE	11 -	15 -	18:	C. W.	180-00-00.0	C. C. W.	180-00-00.0	1814.477
ANGLE	15 -	18 -	19:	C. W.	177-32-01.2	C. C. W.	182-27-58.8	827.289
ANGLE	18 -	19 -	59:	C. W.	272-00-15.5	C. C. W.	87-59-44.5	2656.762
ANGLE	19 -	59 -	99:	C. W.	179-06-23.3	C. C. W.	180-53-36.7	2637.562
ANGLE	59 -	99 -	95:	C. W.	273-27-48.9	C. C. W.	86-32-11.1	2767.685
ANGLE	99 -	95 -	94:	C. W.	177-36-42.4	C. C. W.	182-23-17.6	692.521
ANGLE	95 -	94 -	91:	C. W.	180-42-59.4	C. C. W.	179-17-00.6	1924.004
ANGLE	94 -	91 -	51:	C. W.	269-44-18.2	C. C. W.	90-15-41.8	2572.426
ANGLE	91 -	51 -	11:	C. W.	180-00-00.0	C. C. W.	180-00-00.0	2572.426

-----