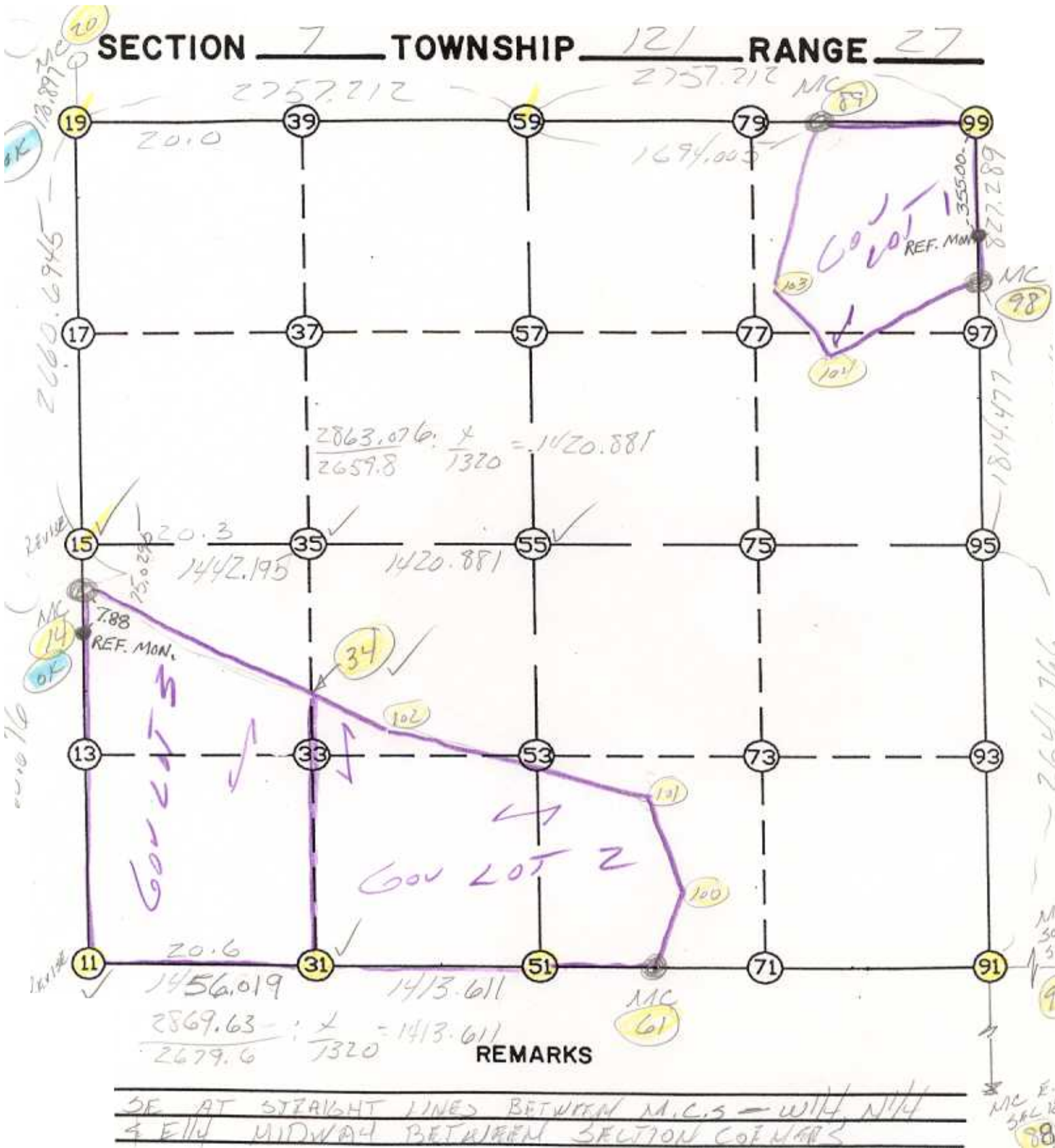


WRIGHT COUNTY SURVEYORS OFFICE

Public Works Building
Buffalo, Minn. 55313

SECTION 7 TOWNSHIP 121 RANGE 27



THE INFORMATION SHOWN HEREON IS A COMPILATION OF WRIGHT COUNTY RECORDS AND IS INTENDED TO BE USED FOR COMPARISON PURPOSES ONLY. THE COUNTY IS NOT RESPONSIBLE FOR ANY INACCURACIES HEREIN CONTAINED.

Coordinate File Name: SEC-07.CRD Lowest pt #: 1 Highest pt #: 104
 Job # : 95-93
 Description: COUNTY COORDINATES SECTION 7 T121 R27
 # of chars. in point descr.: 10

 FROM TYPE BEARING DISTANCE TO NORTHING EASTING

LIST POINTS

POINT	NORTHING	EASTING	ELEVATION	DESCR
11	216637.630000	434508.630000		
14	219223.215440	434488.389469		
15	219298.209671	434490.689741		
19	221957.653863	434572.261950		
20	222128.470529	434577.501350		
31	216668.400706	435964.323818		
34	218394.473137	435943.727995		
35	219304.285491	435932.871942		
51	216698.275178	437377.618758		
55	219310.271517	437353.740431		
59	221999.552894	437329.155580		
61	216703.269790	437618.078309		
88	213530.054753	440066.653605		
89	222025.295263	439022.964988		
90	216617.039544	446821.556397		
91	216680.141804	440086.561468		
95	219321.855050	440103.256519		
98	221136.295714	440114.723388		
99	221963.027240	440084.347063		
100	217340.099708	437717.790020		
101	217908.488076	437499.150435		
102	218100.513894	436459.944207		
103	221007.439018	438729.535675		
104	220619.804186	438941.358313		

START				11	216637.630	434508.630
11	INV N	0-26-54.7 W	2585.665	14	219223.215	434488.389
14	INV N	1-45-24.7 E	75.029	15	219298.210	434490.690
15	INV N	1-45-24.7 E	2660.695	19	221957.654	434572.262
19	INV N	89-07-45.4 E	2757.212	59	221999.553	437329.156
59	INV N	89-07-45.4 E	1694.005	89	222025.295	439022.965
89	INV S	86-38-32.9 E	1063.207	99	221963.027	440084.347
99	INV S	2-06-15.3 E	827.289	98	221136.296	440114.723
98	INV S	0-21-43.5 W	1814.477	95	219321.855	440103.257
95	INV S	0-21-43.5 W	2641.766	91	216680.142	440086.561
91	INV N	89-27-47.5 W	2468.592	61	216703.270	437618.078
61	INV S	88-48-36.3 W	240.511	51	216698.275	437377.619
51	INV S	88-47-20.6 W	2869.630	11	216637.630	434508.630
START				51	216698.275	437377.619
51	INV N	0-31-25.6 W	2612.105	55	219310.272	437353.740
55	INV N	0-31-25.6 W	2689.394	59	221999.553	437329.156
START				15	219298.210	434490.690
15	INV N	89-45-31.0 E	2863.076	55	219310.272	437353.740
55	INV N	89-45-31.0 E	2749.540	95	219321.855	440103.257

POINT-POINT ANGLES

ANGLE	51 -	11 -	14:	C.W.	270-45-44.8	C.C.W.	89-14-15.2	2585.665
ANGLE	11 -	14 -	15:	C.W.	182-12-19.4	C.C.W.	177-47-40.6	75.029
ANGLE	14 -	15 -	19:	C.W.	180-00-00.0	C.C.W.	180-00-00.0	2660.695
ANGLE	15 -	19 -	59:	C.W.	267-22-20.7	C.C.W.	92-37-39.3	2757.212
ANGLE	19 -	59 -	89:	C.W.	180-00-00.0	C.C.W.	180-00-00.0	1694.005
ANGLE	59 -	89 -	99:	C.W.	184-13-41.6	C.C.W.	175-46-18.4	1063.207
ANGLE	89 -	99 -	98:	C.W.	264-32-17.6	C.C.W.	95-27-42.4	827.289
ANGLE	99 -	98 -	95:	C.W.	182-27-58.8	C.C.W.	177-32-01.2	1814.477
ANGLE	98 -	95 -	91:	C.W.	180-00-00.0	C.C.W.	180-00-00.0	2641.766
ANGLE	95 -	91 -	61:	C.W.	270-10-29.0	C.C.W.	89-49-31.0	2468.592
ANGLE	91 -	61 -	51:	C.W.	178-16-23.8	C.C.W.	181-43-36.2	240.511
ANGLE	61 -	51 -	11:	C.W.	179-58-44.3	C.C.W.	180-01-15.7	2869.630