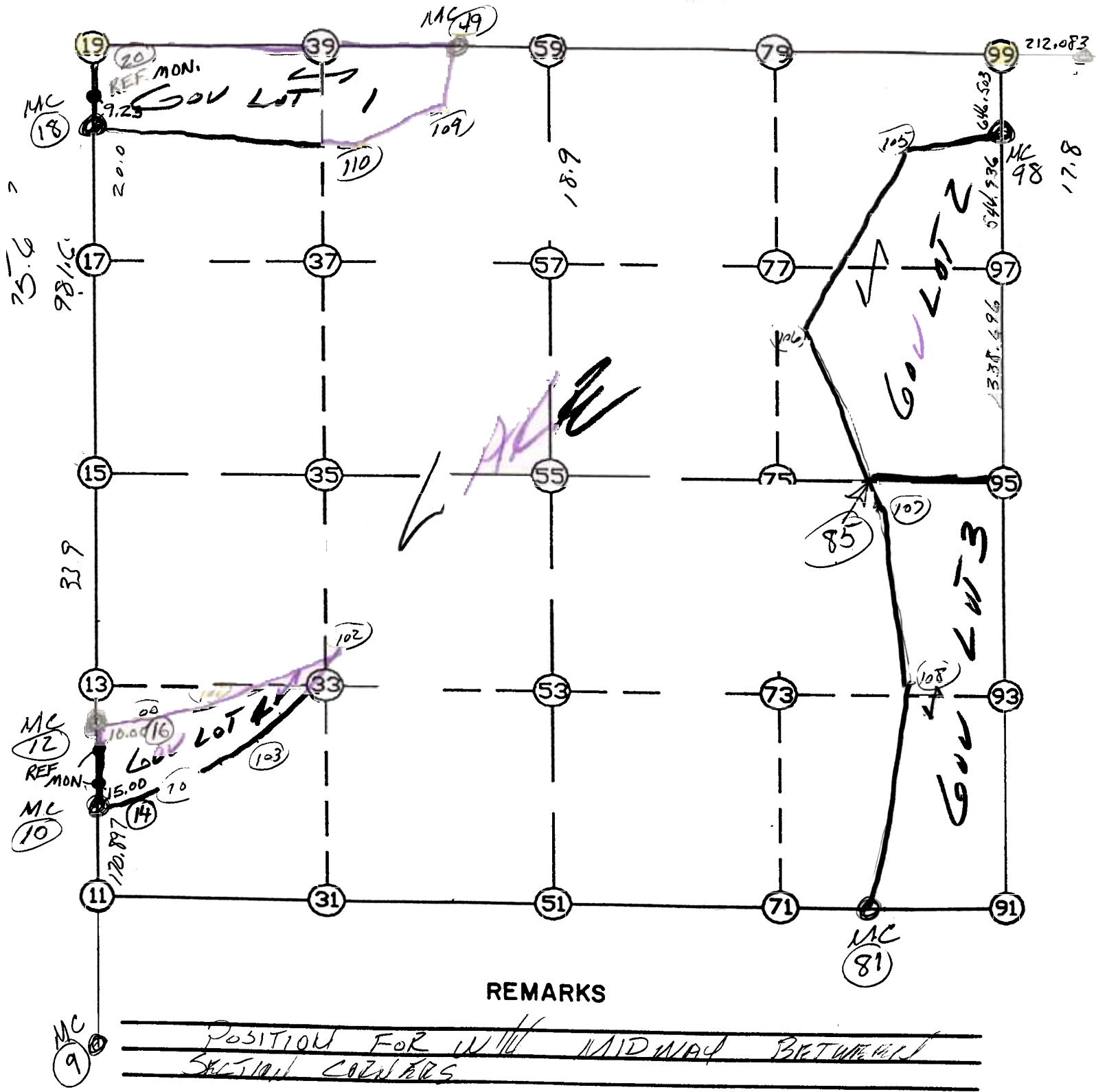


WRIGHT COUNTY SURVEYORS OFFICE

Public Works Building  
Buffalo, Minn. 55313

SECTION 6 TOWNSHIP 121 RANGE 27



THE INFORMATION SHOWN HEREON IS A COMPILATION OF WRIGHT COUNTY RECORDS AND IS INTENDED TO BE USED FOR COMPARISON PURPOSES ONLY. THE COUNTY IS NOT RESPONSIBLE FOR ANY INACCURACIES HEREIN CONTAINED.

Coordinate File Name: SEC-06.CRD    Lowest pt #:    1    Highest pt #:    110  
 Job #                    : 95-93  
 Description: COUNTY COORDINATES SECTION 6 T121 R27  
 # of chars. in point descr.: 10

-----  
 FROM TYPE                    BEARING    DISTANCE    TO            NORTHING            EASTING  
 -----

LIST POINTS

POINT	NORTHING	EASTING	ELEVATION	DESCR
9	219223.215440	434488.389469		
10	222128.470529	434577.501350		
11	221957.653863	434572.261950		
12	222319.877020	434577.799408		
15	224532.559008	434523.873990		
18	226513.617649	434475.593481		
19	227107.607916	434478.195423		
49	227098.708218	437030.753764		
81	222025.295263	439022.964988		
85	224504.399623	439419.921677		
89	227025.768619	440092.902001		
91	221963.027240	440084.347063		
95	224501.409906	439939.741116		
98	226384.374611	439889.608207		
99	227030.818950	439880.879141		
100	222329.722770	434638.246310		
101	222421.848195	434850.071156		
102	222446.306949	435357.438361		
103	222406.105980	435029.714332		
104	222303.270417	434775.113549		
105	226252.271743	439748.061892		
106	225227.006504	439105.738191		
107	224285.915351	439514.916828		
108	223366.548334	439461.852630		
109	226224.976509	436056.495828		
110	226561.587198	436842.335753		

START				11	221957.654	434572.262
11	INV N	1-45-24.7 E	170.897	10	222128.471	434577.501
10	INV N	0-05-21.2 E	191.407	12	222319.877	434577.799
12	INV N	1-23-45.9 W	2213.339	15	224532.559	434523.874
15	INV N	1-23-45.9 W	1981.647	18	226513.618	434475.593
18	INV N	0-15-03.5 E	593.996	19	227107.608	434478.195
19	INV S	89-48-00.8 E	2552.574	49	227098.708	437030.754
49	INV S	88-38-07.8 E	2850.934	99	227030.819	439880.879
99	INV S	1-19-59.1 E	2530.094	95	224501.410	439939.741
95	INV S	3-15-37.8 E	2542.498	91	221963.027	440084.347
91	INV N	86-38-32.9 W	1063.207	81	222025.295	439022.965
81	INV S	89-07-45.4 W	4451.217	11	221957.654	434572.262

START				15	224532.559	434523.874
15	INV S	89-40-13.7 E	5415.957	95	224501.410	439939.741

POINT-POINT ANGLES

ANGLE	81 -	11 -	10:	C.W.	272-37-39.3	C.C.W.	87-22-20.7	170.897
ANGLE	11 -	10 -	12:	C.W.	178-19-56.5	C.C.W.	181-40-03.5	191.407
ANGLE	10 -	12 -	18:	C.W.	178-30-52.9	C.C.W.	181-29-07.1	4194.986
ANGLE	12 -	18 -	19:	C.W.	181-38-49.4	C.C.W.	178-21-10.6	593.996
ANGLE	18 -	19 -	49:	C.W.	269-56-55.6	C.C.W.	90-03-04.4	2552.574
ANGLE	19 -	49 -	99:	C.W.	181-09-53.1	C.C.W.	178-50-06.9	2850.934
ANGLE	49 -	99 -	98:	C.W.	267-51-42.7	C.C.W.	92-08-17.3	646.503
ANGLE	99 -	98 -	95:	C.W.	179-14-54.7	C.C.W.	180-45-05.3	1883.632
ANGLE	98 -	95 -	91:	C.W.	178-15-52.6	C.C.W.	181-44-07.4	2542.498
ANGLE	95 -	91 -	81:	C.W.	276-37-04.8	C.C.W.	83-22-55.2	1063.207
ANGLE	91 -	81 -	11:	C.W.	175-46-18.4	C.C.W.	184-13-41.6	4451.217