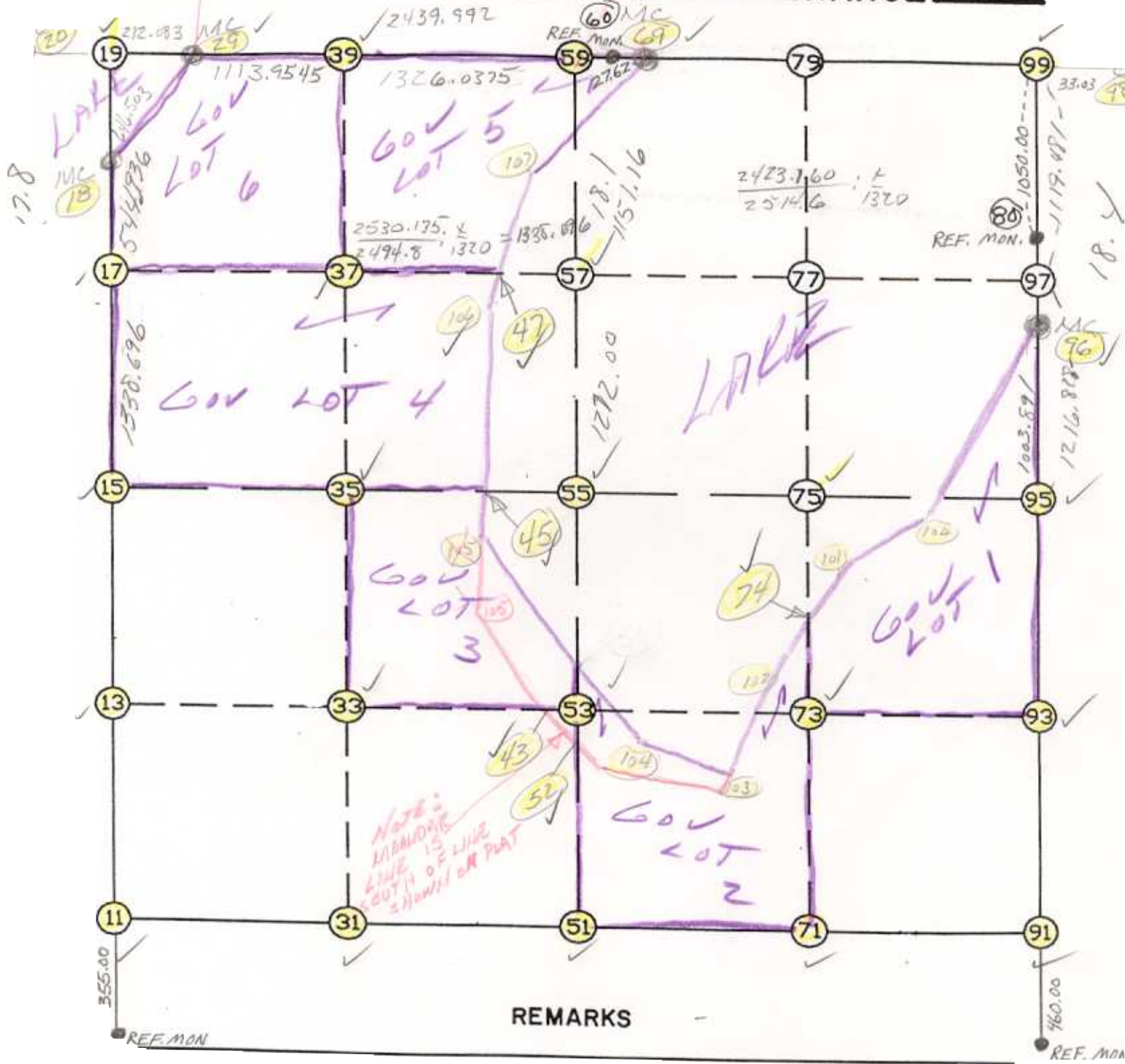


WRIGHT COUNTY SURVEYORS OFFICE

Public Works Building
Buffalo, Minn. 55313

SECTION 5 TOWNSHIP 141 RANGE 27



THE INFORMATION SHOWN HEREON IS A COMPILATION OF WRIGHT COUNTY RECORDS AND IS INTENDED TO BE USED FOR COMPARISON PURPOSES ONLY. THE COUNTY IS NOT RESPONSIBLE FOR ANY INACCURACIES HEREIN CONTAINED.

NOTE 5
WIT
TIZZ 227

REVISED (USE)

COGO =====

Monday December 11, 1995

11:58 AM

Coordinate File Name: SEC-05.CRD Lowest pt #: 1 Highest pt #: 107
Job # : 95-93
Description: COUNTY COORDINATES SECTION 5 T121 R27
of chars. in point descr.: 10

FROM TYPE	BEARING	DISTANCE	TO	NORTHING	EASTING

LIST POINTS					
POINT	NORTHING	EASTING	ELEVATION	DESCR	

11	221963.027240	440084.347063			
13	223232.218573	440012.044090			
15	224501.409906	439939.741116			
17	225839.631683	439904.111691			
18	226384.374611	439889.608207			
19	227030.818950	439880.879141			
20	227098.708218	437030.753764			
29	227025.768619	440092.902001			
31	221965.344288	441412.726233			
33	223253.991649	441349.528699			
35	224542.639010	441286.331165			
37	225847.219036	441244.395246			
39	227016.268156	441206.815987			
43	223275.483149	442669.716566			
45	224567.077378	442084.516407			
47	225852.079603	442103.000267			
51	221967.661336	442741.105402			
52	223244.202041	442688.318474			
53	223275.764725	442687.013308			
55	224583.868114	442632.921214			
57	225854.781979	442580.366964			
59	227004.958923	442532.805373			
69	227002.536136	442816.244118			
71	221990.526638	444059.688246			
73	223307.874029	444021.628024			
74	223412.711086	444018.599118			
75	224625.221419	443983.567803			
91	222013.391940	445378.271090			
93	223339.983332	445356.242741			
95	224666.574724	445334.214391			
96	225668.179205	445266.497303			
98	226997.493217	445209.649449			
99	226997.562811	445176.619522			
100	224554.791322	444772.336293			
101	224195.893048	444450.643352			
102	223305.085301	443959.227092			
103	222919.667040	443245.893200			
104	223052.537486	442802.295456			
105	224225.750549	442104.621936			
106	225579.121546	442024.902917			
107	226316.256327	442235.808113			

START					11	221963.027	440084.347	
11	INV	N	3-15-37.8	W	2542.498	—15	224501.410	439939.741
15	INV	N	1-31-30.4	W	1883.632	18	226384.375	439889.608
18	INV	N	0-46-25.1	W	646.503	19	227030.819	439880.879
19	INV	S	88-38-07.8	E	212.083	29	227025.769	440092.902
29	INV	S	89-30-40.8	E	2439.992	59	227004.959	442532.805
59	INV	S	89-50-23.0	E	2643.824	99	226997.563	445176.620
99	INV	S	3-52-04.1	E	1332.418	96	225668.179	445266.497
96	INV	S	3-52-04.1	E	1003.891	95	224666.575	445334.214
95	INV	S	0-57-04.8	E	2653.549	91	222013.392	445378.271
91	INV	S	89-00-23.6	W	2637.562	51	221967.661	442741.105
51	INV	S	89-54-00.2	W	2656.762	11	221963.027	440084.347
START					51	221967.661	442741.105	
51	INV	N	2-22-04.5	W	2618.443	55	224583.868	442632.921
55	INV	N	2-22-04.5	W	2423.160	59	227004.959	442532.805
START					15	224501.410	439939.741	
15	INV	N	88-14-46.7	E	2694.442	55	224583.868	442632.921
55	INV	N	88-14-46.7	E	2702.559	95	224666.575	445334.214

POINT-POINT ANGLES

ANGLE	51	-	11	-	15:	C.W.	266-50-22.0	C.C.W.	93-09-38.0	2542.498
ANGLE	11	-	15	-	18:	C.W.	181-44-07.4	C.C.W.	178-15-52.6	1883.632
ANGLE	15	-	18	-	19:	C.W.	180-45-05.3	C.C.W.	179-14-54.7	646.503
ANGLE	18	-	19	-	29:	C.W.	272-08-17.3	C.C.W.	87-51-42.7	212.083
ANGLE	19	-	29	-	39:	C.W.	179-07-26.9	C.C.W.	180-52-33.1	1113.955
ANGLE	29	-	39	-	59:	C.W.	180-00-00.0	C.C.W.	180-00-00.0	1326.038
ANGLE	39	-	59	-	69:	C.W.	180-00-03.9	C.C.W.	179-59-56.1	283.449
ANGLE	59	-	69	-	99:	C.W.	179-37-51.5	C.C.W.	180-22-08.5	2360.381
ANGLE	69	-	99	-	96:	C.W.	266-00-41.3	C.C.W.	93-59-18.7	1332.418
ANGLE	99	-	96	-	95:	C.W.	180-00-00.0	C.C.W.	180-00-00.0	1003.891
ANGLE	96	-	95	-	91:	C.W.	182-54-59.3	C.C.W.	177-05-00.7	2653.549
ANGLE	95	-	91	-	51:	C.W.	269-57-28.3	C.C.W.	90-02-31.7	2637.562
ANGLE	91	-	51	-	11:	C.W.	180-53-36.7	C.C.W.	179-06-23.3	2656.762

Coordinates stored

Monday December 11, 1995

11:59 AM