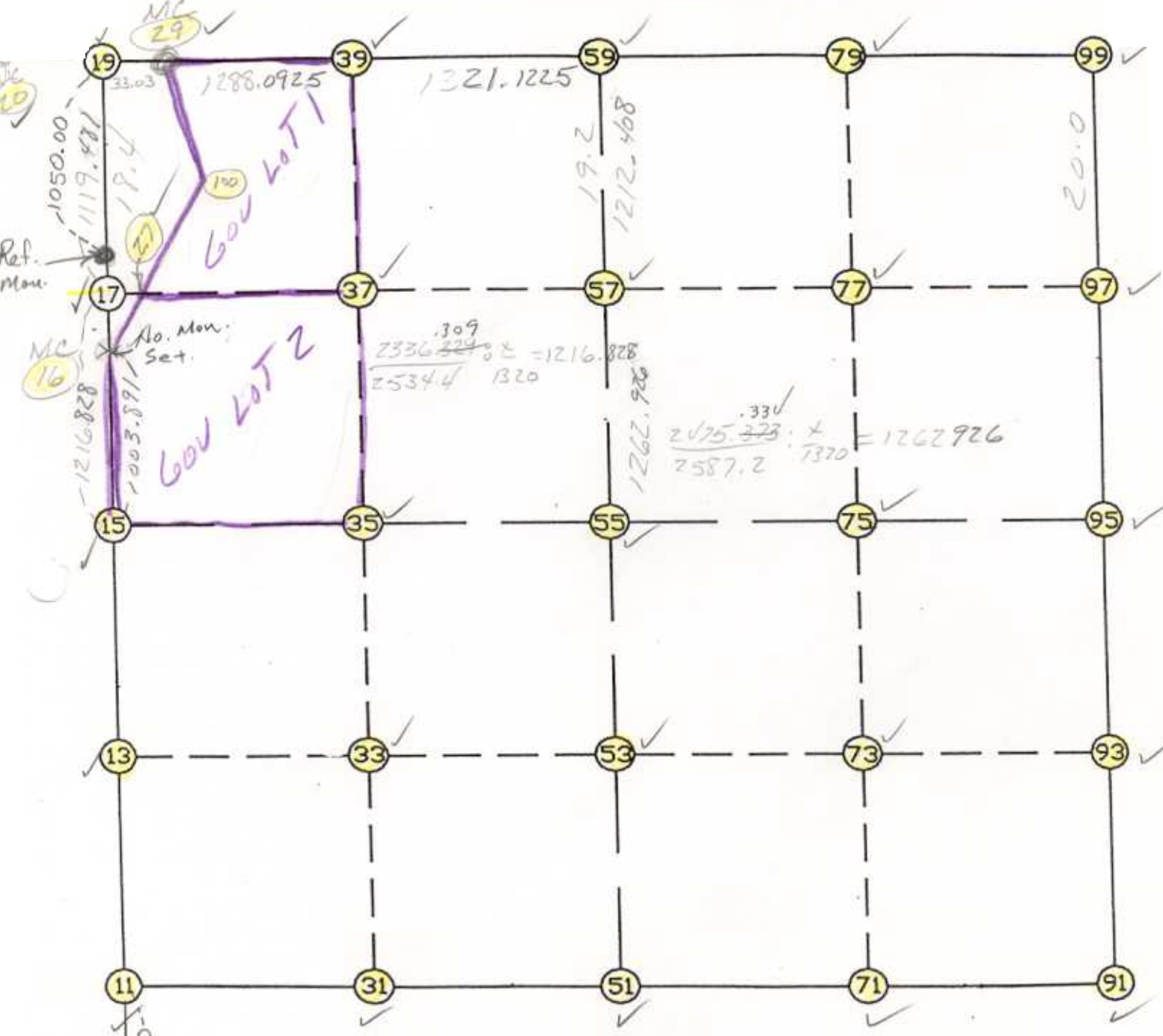


WRIGHT COUNTY SURVEYORS OFFICE

Public Works Building
Buffalo, Minn. 55313

SECTION 4 TOWNSHIP 121 RANGE 27



REMARKS

THE INFORMATION SHOWN HEREON IS A COMPILATION OF WRIGHT COUNTY RECORDS AND IS INTENDED TO BE USED FOR COMPARISON PURPOSES ONLY. THE COUNTY IS NOT RESPONSIBLE FOR ANY INACCURACIES HEREIN CONTAINED.

*NOTE 2
SECTIONS 4
REVISED WITH
T 122 R 27*

Coordinate File Name: SEC-04.CRD Lowest pt #: 1 Highest pt #: 100
 Job # : 95-93
 Description: COUNTY COORDINATES SECTION 4 T121 R27
 # of chars. in point descr.: 10

 FROM TYPE BEARING DISTANCE TO NORTHING EASTING

LIST POINTS
 POINT NORTHING EASTING ELEVATION DESCR

11	222013.391940	445378.271090		
13	223339.983332	445356.242741		
15	224666.574724	445334.214391		
16	225668.179205	445266.497303		
17	225880.631208	445252.133718		
19	226997.562811	445176.619522		
20	227002.536136	442816.244118		
27	225876.674227	445354.866430		
29	226997.493217	445209.649449		
31	222042.324287	446682.661551		
33	223317.301800	446650.739219		
35	224592.279314	446618.816888		
37	225830.393758	446556.418510		
39	226994.718876	446497.738961		
51	222071.256634	447987.052011		
53	223294.620269	447945.235697		
55	224517.983904	447903.419384		
57	225780.172768	447860.275969		
59	226991.873394	447818.858313		
71	221919.135377	449214.479373		
73	223181.685491	449196.520734		
75	224444.235604	449178.562095		
77	225730.372150	449159.387069		
79	226991.283240	449140.588129		
91	221767.014121	450441.906735		
93	223068.750712	450447.805771		
95	224370.487303	450453.704807		
97	225680.590194	450458.011375		
99	226990.693085	450462.317944		
100	226431.317611	445589.948072		

START					11	222013.392	445378.271
11	INV N	0-57-04.8 W	2653.549	15	224666.575	445334.214	
15	INV N	3-52-04.1 W	1003.891	16	225668.179	445266.497	
16	INV N	3-52-04.1 W	1332.418	19	226997.563	445176.620	
19	INV S	89-52-45.4 E	33.030	29	226997.493	445209.649	
29	INV S	89-52-35.7 E	2609.215	59	226991.873	447818.858	
59	INV S	89-58-27.9 E	2643.460	99	226990.693	450462.318	
99	INV S	0-11-18.0 W	2620.220	95	224370.487	450453.705	
95	INV S	0-15-34.7 W	2603.500	91	221767.014	450441.907	
91	INV N	82-56-06.3 W	2473.636	51	222071.257	447987.052	
51	INV S	88-43-45.6 W	2609.423	11	222013.392	445378.271	

START				51	222071.257	447987.052
51	INV N	1-57-27.7 W	2448.156	55	224517.984	447903.419
55	INV N	1-57-27.7 W	2475.334	59	226991.873	447818.858

START				15	224666.575	445334.214
15	INV S	86-41-23.9 E	2573.498	55	224517.984	447903.419
55	INV S	86-41-23.9 E	2554.547	95	224370.487	450453.705

POINT-POINT ANGLES

ANGLE	51 -	11 -	15:	C. W.	270-19-09.6	C. C. W.	89-40-50.4	2653.549
ANGLE	11 -	15 -	16:	C. W.	177-05-00.7	C. C. W.	182-54-59.3	1003.891
ANGLE	15 -	16 -	19:	C. W.	180-00-00.0	C. C. W.	180-00-00.0	1332.418
ANGLE	16 -	19 -	29:	C. W.	273-59-18.7	C. C. W.	86-00-41.3	33.030
ANGLE	19 -	29 -	59:	C. W.	180-00-09.7	C. C. W.	179-59-50.3	2609.215
ANGLE	29 -	59 -	99:	C. W.	179-54-07.8	C. C. W.	180-05-52.2	2643.460
ANGLE	59 -	99 -	95:	C. W.	270-09-45.9	C. C. W.	89-50-14.1	2620.220
ANGLE	99 -	95 -	91:	C. W.	180-04-16.7	C. C. W.	179-55-43.3	2603.500
ANGLE	95 -	91 -	51:	C. W.	276-48-19.0	C. C. W.	83-11-41.0	2473.636
ANGLE	91 -	51 -	11:	C. W.	171-39-51.9	C. C. W.	188-20-08.1	2609.423
