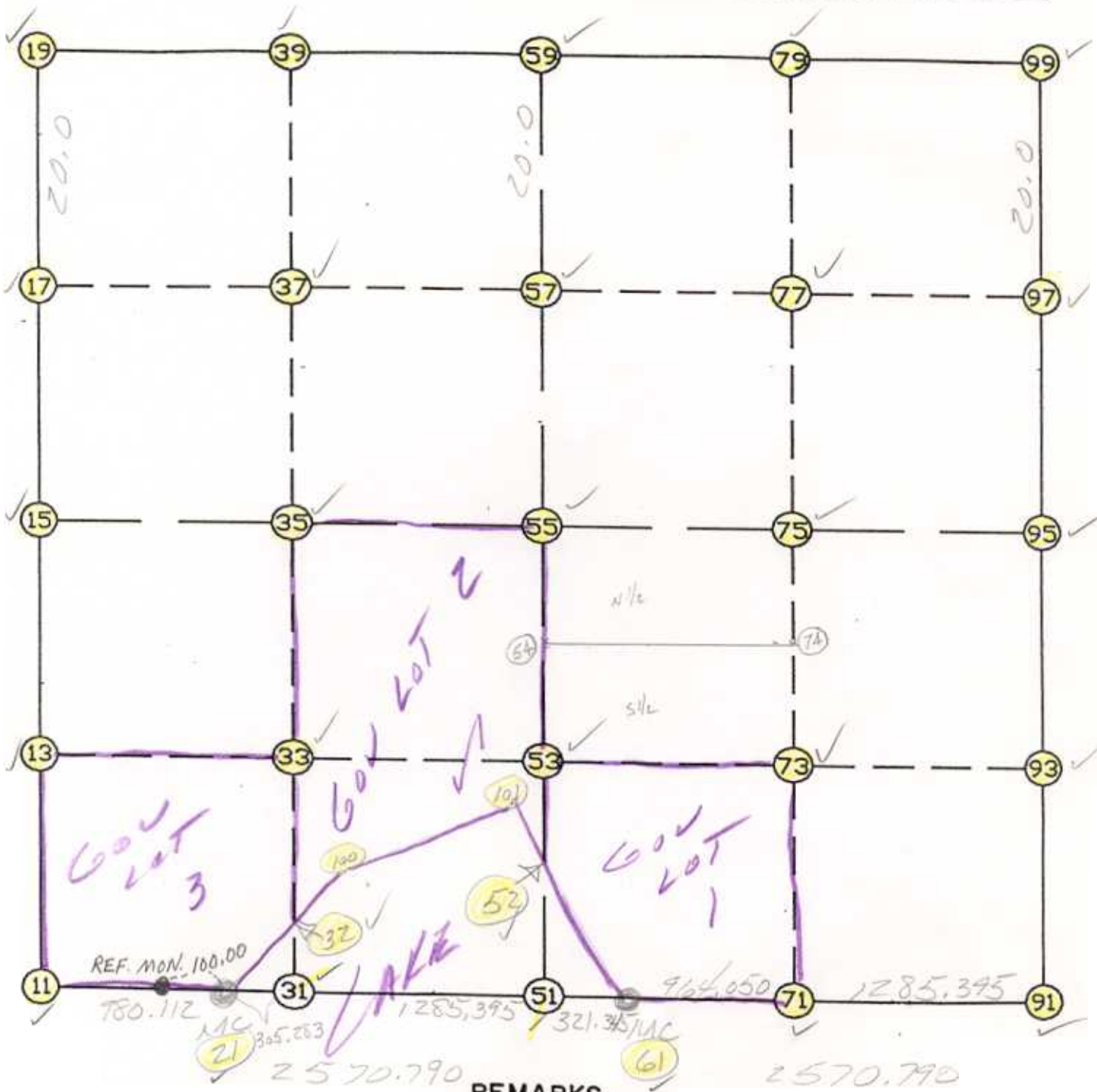


WRIGHT COUNTY SURVEYORS OFFICE

Public Works Building  
Buffalo, Minn. 55313

SECTION 3 TOWNSHIP 121 RANGE 27



THE INFORMATION SHOWN HEREON IS A COMPILATION OF WRIGHT COUNTY RECORDS AND IS INTENDED TO BE USED FOR COMPARISON PURPOSES ONLY. THE COUNTY IS NOT RESPONSIBLE FOR ANY INACCURACIES HEREIN CONTAINED.

NOTE #3  
SECTION 3  
REVISED WITH  
T122 R27

Coordinate File Name: SEC-03.CRD    Lowest pt #:    1    Highest pt #:  
 Job #                    : 95-93  
 Description: COUNTY COORDINATES SECTION 3 T121 R27  
 # of chars. in point descr.: 10

| FROM TYPE   | BEARING       | DISTANCE      | TO        | NORTHING | EASTING |
|-------------|---------------|---------------|-----------|----------|---------|
| -----       |               |               |           |          |         |
| LIST POINTS |               |               |           |          |         |
| POINT       | NORTHING      | EASTING       | ELEVATION | DESCR    |         |
| -----       |               |               |           |          |         |
| 11          | 221767.014121 | 450441.906735 |           |          |         |
| 13          | 223068.750712 | 450447.805771 |           |          |         |
| 15          | 224370.487303 | 450453.704807 |           |          |         |
| 17          | 225680.590194 | 450458.011375 |           |          |         |
| 19          | 226990.693085 | 450462.317944 |           |          |         |
| 21          | 221783.932299 | 451421.872681 |           |          |         |
| 31          | 221784.569643 | 451727.155016 |           |          |         |
| 32          | 222086.815837 | 451730.204547 |           |          |         |
| 33          | 223079.082496 | 451740.216080 |           |          |         |
| 35          | 224381.032516 | 451753.352182 |           |          |         |
| 37          | 225683.771587 | 451765.565841 |           |          |         |
| 39          | 226986.510659 | 451777.779500 |           |          |         |
| 51          | 221787.253181 | 453012.547215 |           |          |         |
| 52          | 222306.361042 | 453020.610391 |           |          |         |
| 53          | 223089.415455 | 453032.773385 |           |          |         |
| 55          | 224391.577729 | 453052.999556 |           |          |         |
| 57          | 225686.952981 | 453073.120306 |           |          |         |
| 59          | 226982.328232 | 453093.241055 |           |          |         |
| 61          | 221787.924057 | 453333.891085 |           |          |         |
| 71          | 221790.530220 | 454297.937562 |           |          |         |
| 73          | 223096.413433 | 454329.901242 |           |          |         |
| 75          | 224402.197716 | 454361.862501 |           |          |         |
| 77          | 225692.172437 | 454387.863365 |           |          |         |
| 79          | 226982.147158 | 454413.864229 |           |          |         |
| 91          | 221794.005090 | 455583.327717 |           |          |         |
| 93          | 223103.411397 | 455627.026581 |           |          |         |
| 95          | 224412.817703 | 455670.725446 |           |          |         |
| 97          | 225697.391893 | 455702.606425 |           |          |         |
| 99          | 226981.966083 | 455734.487404 |           |          |         |
| 100         | 222347.061730 | 451995.131793 |           |          |         |
| 101         | 222501.084697 | 452902.942934 |           |          |         |

|       |       |              |          |    |            |            |
|-------|-------|--------------|----------|----|------------|------------|
| START |       |              |          | 11 | 221767.014 | 450441.907 |
| 11    | INV N | 0-15-34.7 E  | 2603.500 | 15 | 224370.487 | 450453.705 |
| 15    | INV N | 0-11-18.0 E  | 2620.220 | 19 | 226990.693 | 450462.318 |
| 19    | INV S | 89-49-04.2 E | 2630.936 | 59 | 226982.328 | 453093.241 |
| 59    | INV S | 89-59-31.7 E | 2641.246 | 99 | 226981.966 | 455734.487 |
| 99    | INV S | 1-25-18.1 W  | 2569.939 | 95 | 224412.818 | 455670.725 |
| 95    | INV S | 1-54-41.1 W  | 2620.271 | 91 | 221794.005 | 455583.328 |
| 91    | INV S | 89-50-42.4 W | 2249.445 | 61 | 221787.924 | 453333.891 |
| 61    | INV S | 89-52-49.4 W | 321.345  | 51 | 221787.253 | 453012.547 |
| 51    | INV S | 89-52-49.4 W | 1590.678 | 21 | 221783.932 | 451421.873 |
| 21    | INV S | 89-00-39.4 W | 980.112  | 11 | 221767.014 | 450441.907 |
| START |       |              |          | 51 | 221787.253 | 453012.547 |
| 51    | INV N | 0-53-23.6 E  | 2604.639 | 55 | 224391.578 | 453053.000 |
| 55    | INV N | 0-53-23.6 E  | 2591.063 | 59 | 226982.328 | 453093.241 |
| START |       |              |          | 15 | 224370.487 | 450453.705 |
| 15    | INV N | 89-32-06.4 E | 2599.380 | 55 | 224391.578 | 453053.000 |
| 55    | INV N | 89-32-06.4 E | 2617.812 | 95 | 224412.818 | 455670.725 |

| POINT-POINT ANGLES |    |   |    |   |     |      |             |        |             |          |
|--------------------|----|---|----|---|-----|------|-------------|--------|-------------|----------|
| ANGLE              | 21 | - | 11 | - | 15: | C.W. | 271-14-55.3 | C.C.W. | 88-45-04.7  | 2603.500 |
| ANGLE              | 11 | - | 15 | - | 19: | C.W. | 179-55-43.3 | C.C.W. | 180-04-16.7 | 2620.220 |
| ANGLE              | 15 | - | 19 | - | 59: | C.W. | 269-59-37.8 | C.C.W. | 90-00-22.2  | 2630.936 |
| ANGLE              | 19 | - | 59 | - | 99: | C.W. | 179-49-32.5 | C.C.W. | 180-10-27.5 | 2641.246 |
| ANGLE              | 59 | - | 99 | - | 95: | C.W. | 271-24-49.8 | C.C.W. | 88-35-10.2  | 2569.939 |
| ANGLE              | 99 | - | 95 | - | 91: | C.W. | 180-29-23.0 | C.C.W. | 179-30-37.0 | 2620.271 |
| ANGLE              | 95 | - | 91 | - | 61: | C.W. | 267-56-01.3 | C.C.W. | 92-03-58.7  | 2249.445 |
| ANGLE              | 91 | - | 61 | - | 51: | C.W. | 180-02-07.0 | C.C.W. | 179-57-53.0 | 321.345  |
| ANGLE              | 61 | - | 51 | - | 21: | C.W. | 180-00-00.0 | C.C.W. | 180-00-00.0 | 1590.678 |
| ANGLE              | 51 | - | 21 | - | 11: | C.W. | 179-07-50.0 | C.C.W. | 180-52-10.0 | 980.112  |