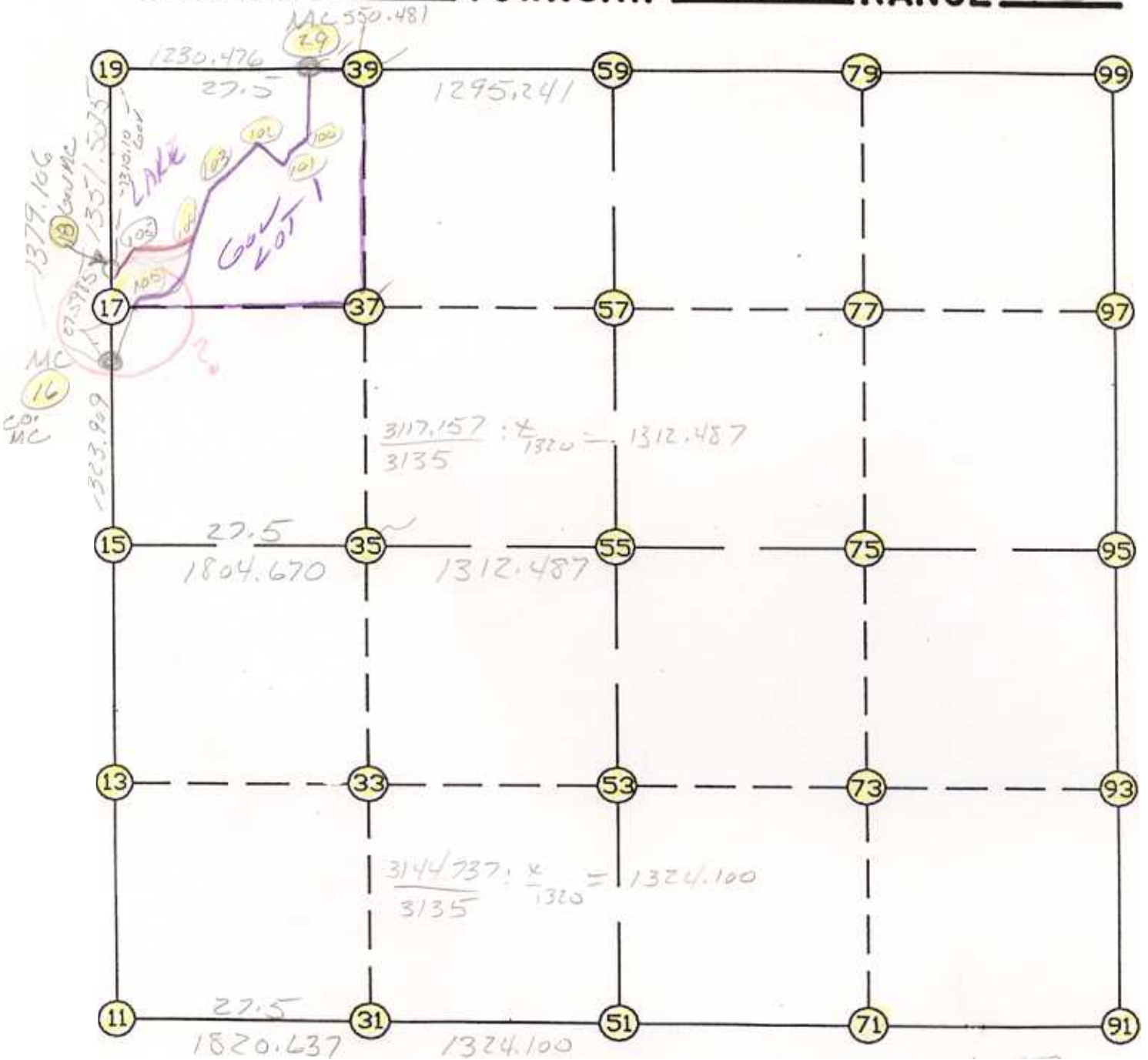


WRIGHT COUNTY SURVEYORS OFFICE

Public Works Building
Buffalo, Minn. 55313

SECTION 31 TOWNSHIP 121 RANGE 25



REMARKS

NOTE 2 MEANDER LINE READJUSTED 10/7/95
TO FIT SEC 26 T121 R76

THE INFORMATION SHOWN HEREON IS A COMPILATION OF WRIGHT COUNTY RECORDS AND IS INTENDED TO BE USED FOR COMPARISON PURPOSES ONLY. THE COUNTY IS NOT RESPONSIBLE FOR ANY INACCURACIES HEREIN CONTAINED.

Coordinate File Name: SEC-31.CRD Lowest pt #: 1 Highest pt #: 105
 Job # : 95-75
 Description: COUNTY COORDINATES SECTION 31 T121 R25
 # of chars. in point descr.: 10

 FROM TYPE BEARING DISTANCE TO NORTHING EASTING

LIST POINTS

POINT	NORTHING	EASTING	ELEVATION	DESCR
11	194929.256908	498105.173907		
13	196243.236386	498097.386072		
15	197557.215864	498089.598237		
16	198881.101619	498081.745741		
17	198908.699788	498081.880837		
18	198950.106731	498082.083528		
19	200260.191035	498088.496524		
29	200229.496885	499318.589633		
31	194914.595448	499925.752175		
33	196232.670235	499910.004406		
35	197550.745023	499894.256636		
37	198883.210812	499881.578408		
39	200215.765169	499868.899337		
51	194903.932566	501249.809241		
53	196224.985762	501228.272086		
55	197546.038959	501206.734932		
57	198864.747212	501185.236007		
59	200183.455465	501163.737082		
71	194893.247014	502574.031176		
73	196217.275783	502550.574491		
75	197541.304552	502527.117806		
77	198861.361782	502503.677861		
79	200181.419012	502480.237916		
91	194882.561462	503898.253111		
93	196209.565803	503872.876896		
95	197536.570145	503847.500681		
97	198857.976352	503822.119716		
99	200179.382559	503796.738751		
100	199966.247230	499319.605946		
101	199718.470654	499101.941021		
102	199807.360560	498821.438637		
103	199507.844456	498563.302801		
104	199117.124761	498524.490325		
105	199117.155472	498283.765235		

START					11	194929.257	498105.174	
11	INV	N	0-20-22.5	W	2628.005	15	197557.216	498089.598
15	INV	N	0-20-23.4	W	1323.909	16	198881.102	498081.746
16	INV	N	0-16-49.7	E	69.006	18	198950.107	498082.084
18	INV	N	0-16-49.7	E	1310.100	19	200260.191	498088.497
19	INV	S	88-34-14.2	E	1230.476	29	200229.497	499318.590
29	INV	S	88-34-14.2	E	1845.722	59	200183.455	501163.737
59	INV	S	89-54-40.9	E	2633.005	99	200179.383	503796.739
99	INV	S	1-06-01.4	E	2643.300	95	197536.570	503847.501
95	INV	S	1-05-43.9	E	2654.494	91	194882.561	503898.253
91	INV	N	89-32-15.6	W	2648.530	51	194903.933	501249.809
51	INV	N	89-32-18.9	W	3144.737	11	194929.257	498105.174

START					51	194903.933	501249.809	
51	INV	N	0-56-02.4	W	2642.457	55	197546.039	501206.735
55	INV	N	0-56-02.4	W	2637.767	59	200183.455	501163.737

START					15	197557.216	498089.598	
15	INV	S	89-47-40.4	E	3117.157	55	197546.039	501206.735
55	INV	S	89-47-40.4	E	2640.783	95	197536.570	503847.501

POINT-POINT ANGLES

ANGLE	51 -	11 -	15:	C.W.	269-11-56.4	C.C.W.	90-48-03.6	2628.005
ANGLE	11 -	15 -	16:	C.W.	179-59-59.1	C.C.W.	180-00-00.9	1323.909
ANGLE	15 -	16 -	18:	C.W.	180-37-13.1	C.C.W.	179-22-46.9	69.006
ANGLE	16 -	18 -	19:	C.W.	180-00-00.0	C.C.W.	180-00-00.0	1310.100
ANGLE	18 -	19 -	29:	C.W.	271-08-56.1	C.C.W.	88-51-03.9	1230.476
ANGLE	19 -	29 -	39:	C.W.	180-00-00.0	C.C.W.	180-00-00.0	550.481
ANGLE	29 -	39 -	59:	C.W.	180-00-00.0	C.C.W.	180-00-00.0	1295.241
ANGLE	39 -	59 -	99:	C.W.	178-39-33.3	C.C.W.	181-20-26.7	2633.005
ANGLE	59 -	99 -	95:	C.W.	268-48-39.6	C.C.W.	91-11-20.4	2643.300
ANGLE	99 -	95 -	91:	C.W.	180-00-17.4	C.C.W.	179-59-42.6	2654.494
ANGLE	95 -	91 -	51:	C.W.	271-33-28.3	C.C.W.	88-26-31.7	2648.530
ANGLE	91 -	51 -	11:	C.W.	179-59-56.7	C.C.W.	180-00-03.3	3144.737

Coordinates stored

Saturday October 7, 1995

10:53 AM