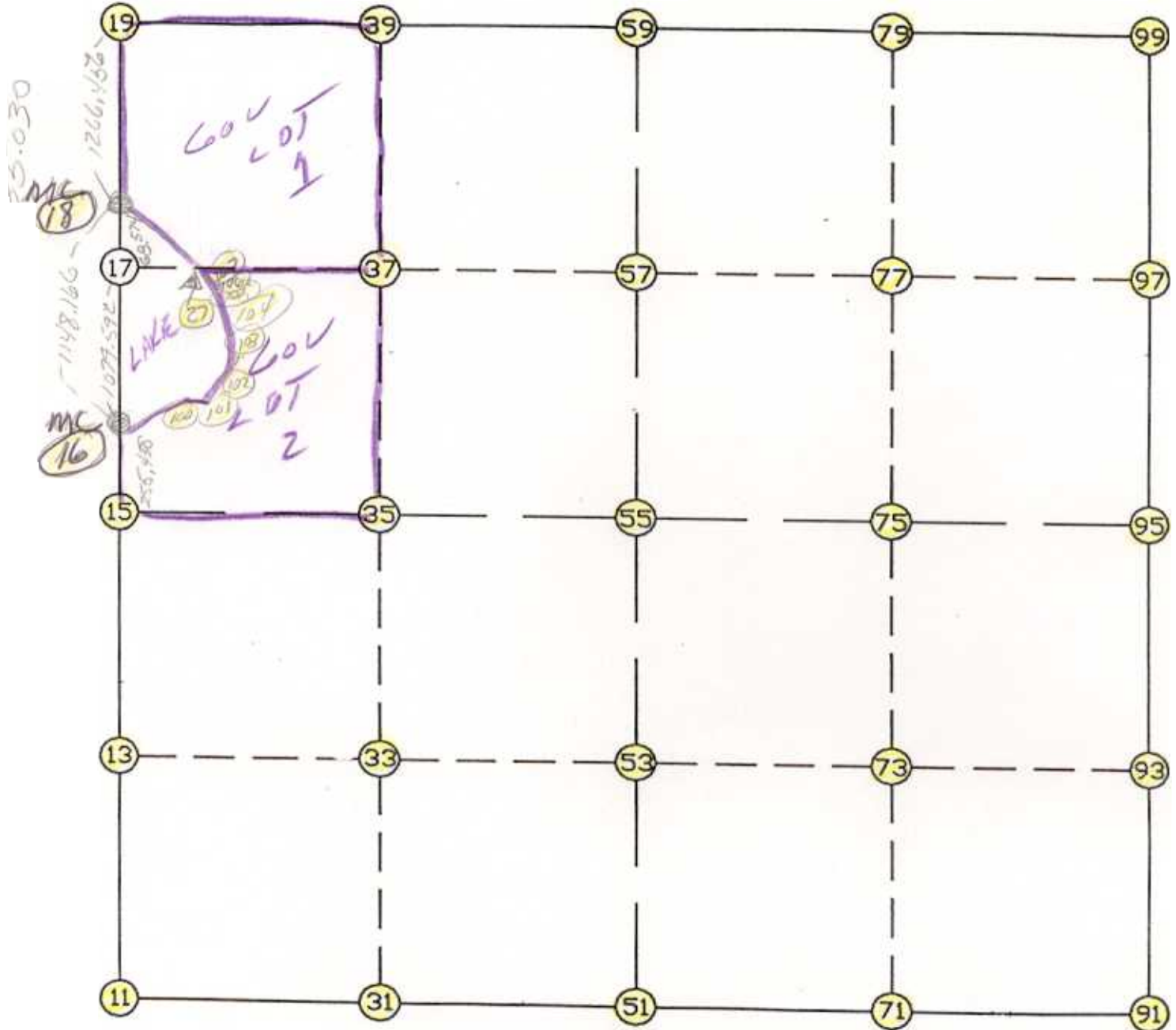


WRIGHT COUNTY SURVEYORS OFFICE

Public Works Building

Buffalo, Minn. 55313

SECTION 29 TOWNSHIP 121 RANGE 25



REMARKS

THE INFORMATION SHOWN HEREON IS A COMPILATION OF WRIGHT COUNTY RECORDS AND IS INTENDED TO BE USED FOR COMPARISON PURPOSES ONLY. THE COUNTY IS NOT RESPONSIBLE FOR ANY INACCURACIES HEREIN CONTAINED.



==== COGO ====

Friday September 8, 1995

3:03 PM

Coordinate File Name: SEC-29.CRD Lowest pt R: 1 Highest pt R: 107

Job R : 95-75

Description: COUNTY COORDINATES SECTION 29 T121 R25
R of chars. in point descr.: 10

FROM	TYPE	BEARING	DISTANCE	TO	NORTHING	EASTING
------	------	---------	----------	----	----------	---------

LIST POINTS	POINT	NORTHING	EASTING	ELEVATION	DESCR
-------------	-------	----------	---------	-----------	-------

11	200179.382559	503796.738751			
13	201488.303842	503782.610116			
15	202797.225125	503768.481482			
16	203052.109755	503751.678973			
17	204130.980856	503712.232377			
18	204199.509237	503709.726784			
19	205465.961158	503706.431098			
27	204131.142732	503777.224933			
31	200176.859082	505129.418472			
33	201489.942770	505116.413672			
35	202803.026458	505103.408871			
37	204134.392294	505081.907613			
39	205466.307568	505060.397482			
51	200174.335605	506462.098194			
53	201491.581698	506450.217227			
55	202808.827792	506438.336261			
57	204137.740885	506426.350063			
59	205466.653979	506414.363866			
71	200180.802592	507784.371002			
73	201497.695809	507774.203872			
75	202814.589026	507764.036742			
77	204139.750415	507749.105505			
79	205464.911803	507734.174267			
91	200187.269579	509106.643811			
93	201503.809920	509098.190517			
95	202820.350261	509089.737223			
97	204141.759945	509071.860946			
99	205463.169628	509053.984669			
100	203269.029612	504005.532167			
101	203300.744749	504065.209344			
102	203528.371350	504180.651962			
103	203659.088522	504166.656194			
104	203824.674323	504124.892393			
105	203972.532931	504002.173924			
106	204062.358197	503865.663845			
107	204103.482280	503804.534056			

START					11	200179.383	503796.739
11	INV N	0-37-06.4 W	2617.995	15	202797.225	503768.481	
15	INV N	3-46-17.7 W	255.438	16	203052.110	503751.679	
16	INV N	2-05-38.3 W	1148.166	18	204199.509	503709.727	
18	INV N	0-08-56.8 W	1266.456	19	205465.961	503706.431	
19	INV N	89-59-07.2 E	2707.933	59	205466.654	506414.364	
59	INV S	89-55-27.7 E	2639.623	99	205463.170	509053.985	
99	INV S	0-46-30.2 E	2643.061	95	202820.350	509089.737	
95	INV S	0-22-04.4 E	2633.135	91	200187.270	509106.644	
91	INV S	89-43-11.2 W	2644.577	51	200174.336	506462.098	
51	INV N	89-53-29.4 W	2665.364	11	200179.383	503796.739	
START				51	200174.336	506462.098	
51	INV N	0-31-00.4 W	2634.599	55	202808.828	506438.336	
55	INV N	0-31-00.4 W	2657.934	59	205466.654	506414.364	
START				15	202797.225	503768.481	
15	INV N	89-45-03.6 E	2669.880	55	202808.828	506438.336	
55	INV N	89-45-03.6 E	2651.426	95	202820.350	509089.737	

POINT-POINT ANGLES

ANGLE	51 -	11 -	15:	C.W.	269-16-23.1	C.C.W.	90-43-36.9	2617.995
ANGLE	11 -	15 -	16:	C.W.	176-50-48.6	C.C.W.	183-09-11.4	255.438
ANGLE	15 -	16 -	18:	C.W.	181-40-39.5	C.C.W.	178-19-20.5	1148.166
ANGLE	16 -	18 -	19:	C.W.	181-56-41.5	C.C.W.	178-03-18.5	1266.456
ANGLE	18 -	19 -	59:	C.W.	270-08-04.0	C.C.W.	89-51-56.0	2707.933
ANGLE	19 -	59 -	99:	C.W.	180-05-25.0	C.C.W.	179-54-35.0	2639.623
ANGLE	59 -	99 -	95:	C.W.	269-08-57.5	C.C.W.	90-51-02.5	2643.061
ANGLE	99 -	95 -	91:	C.W.	180-24-25.8	C.C.W.	179-35-34.2	2633.135
ANGLE	95 -	91 -	51:	C.W.	270-05-15.6	C.C.W.	89-54-44.4	2644.577
ANGLE	91 -	51 -	11:	C.W.	180-23-19.4	C.C.W.	179-36-40.6	2665.364

Coordinates stored

Friday September 8, 1995

3:05 PM