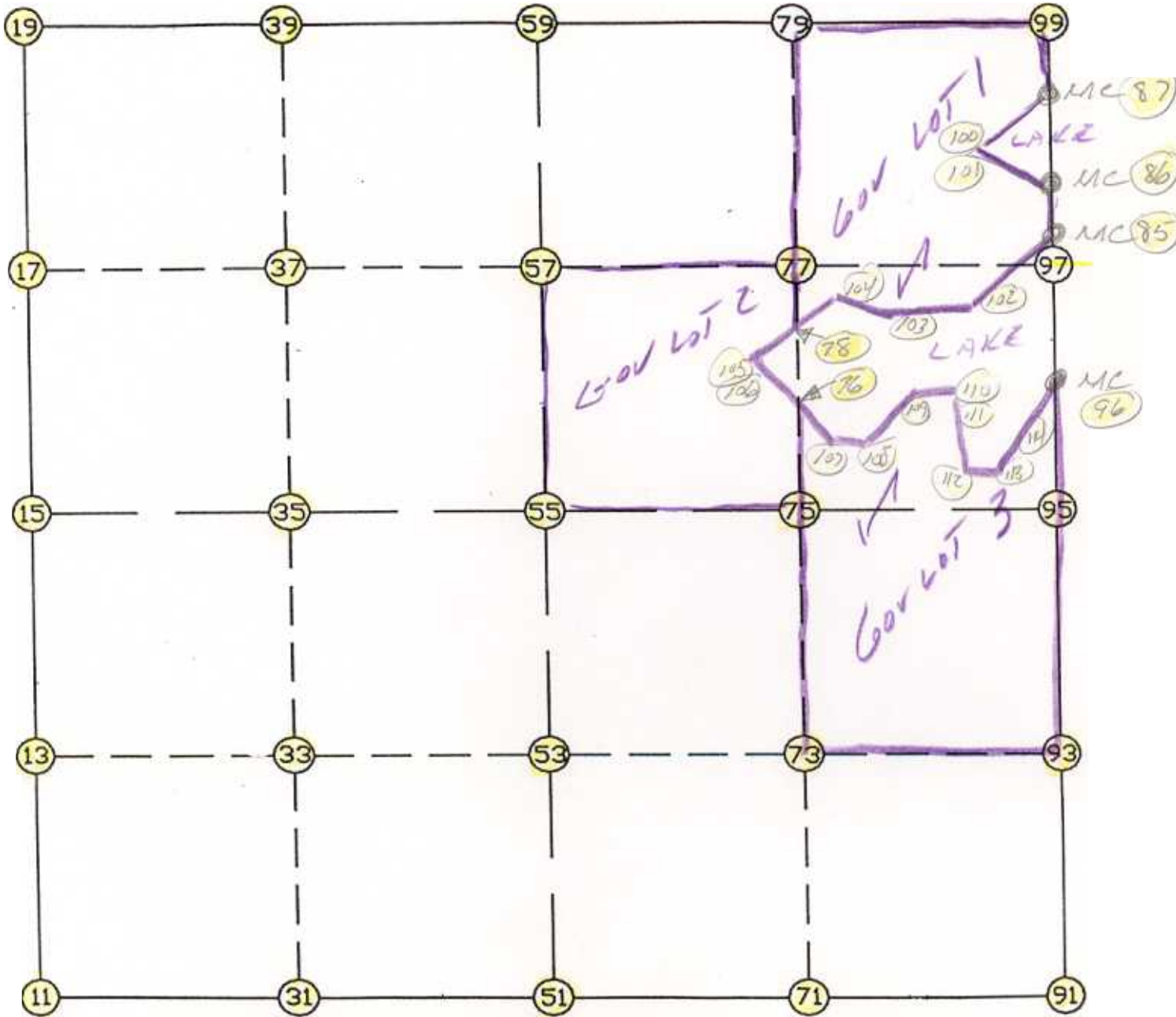


WRIGHT COUNTY SURVEYORS OFFICE

Public Works Building
Buffalo, Minn. 55313

SECTION 28 TOWNSHIP 12 RANGE 25



REMARKS

THE INFORMATION SHOWN HEREON IS A COMPILATION OF WRIGHT COUNTY RECORDS AND IS INTENDED TO BE USED FOR COMPARISON PURPOSES ONLY. THE COUNTY IS NOT RESPONSIBLE FOR ANY INACCURACIES HEREIN CONTAINED.

==== COGO ====

Friday September 8, 1995

2:45 PM

Coordinate File Name: SEC-28.CRD Lowest pt R: 1 Highest pt R: 114

Job R : 95-75

Description: COUNTY COORDINATES SECTION 28 T121 R25

R of chars. in point descr.: 10

FROM TYPE BEARING DISTANCE TO NORTHING EASTING

LIST POINTS
POINT NORTHING EASTING ELEVATION DESCR

11 200187.269579 509106.643811
13 201503.809920 509098.190517
15 202820.350261 509089.737223
17 204141.759945 509071.860946
19 205463.169628 509053.984669
31 200204.536945 510428.871264
33 201520.167126 510417.447388
35 202835.797306 510406.023513
37 204153.437170 510389.892799
39 205471.077033 510373.762084
51 200221.804311 511751.098717
53 201536.524331 511736.704260
55 202851.244352 511722.309803
57 204165.114395 511707.924651
59 205478.984437 511693.539500
71 200238.277901 513071.390282
73 201552.557382 513061.190962
75 202866.836863 513050.991642
76 203455.598161 513042.871836
77 204179.707332 513032.885400
78 203947.473534 513036.088215
79 205492.570666 513014.779257
85 204365.679222 514360.944478
86 204733.617359 514352.903085
87 205113.339682 514344.604146
91 200254.751491 514391.681847
93 201568.590432 514385.677664
95 202882.429374 514379.673482
96 203581.355517 514378.086095
97 204194.375629 514364.688366
99 205506.156895 514336.019014
100 204956.155614 514202.970424
101 204831.519889 514239.997311
102 204066.303033 514143.337975
103 204050.207491 513567.006028
104 204134.431650 513334.902031
105 203846.857467 512875.274277
106 203678.592806 512892.865505
107 203430.927761 513059.467374
108 203383.437058 513214.457837
109 203607.768551 513446.785967
110 203728.971129 513799.626688
111 203408.213923 513891.173969
112 203255.164031 513880.407065
113 203195.560153 514014.066817
114 203484.440888 514274.150527

START					11	200187.270	509106.644
11	INV N	0-22-04.4	W	2633.135	15	202820.350	509089.737
15	INV N	0-46-30.2	W	2643.061	19	205463.170	509053.985
19	INV N	89-39-24.2	E	2639.602	59	205478.984	511693.539
59	INV N	89-24-39.1	E	2642.619	99	205506.157	514336.019
99	INV S	1-15-07.3	E	392.911	87	205113.340	514344.604
87	INV S	1-15-07.3	E	379.813	86	204733.617	514352.903
86	INV S	1-15-07.3	E	368.026	85	204365.679	514360.944
85	INV S	1-15-07.3	E	784.511	96	203581.356	514378.086
96	INV S	0-07-48.5	E	698.928	95	202882.429	514379.673
95	INV S	0-15-42.6	E	2627.705	91	200254.751	514391.682
91	INV S	89-17-06.5	W	2640.789	51	200221.804	511751.099
51	INV S	89-15-06.5	W	2644.680	11	200187.270	509106.644

START					51	200221.804	511751.099
51	INV N	0-37-38.2	W	2629.598	55	202851.244	511722.310
55	INV N	0-37-38.2	W	2627.898	59	205478.984	511693.539
START					15	202820.350	509089.737
15	INV N	89-19-39.5	E	2632.754	55	202851.244	511722.310
55	INV N	89-19-39.5	E	2657.547	95	202882.429	514379.673

POINT-POINT ANGLES

ANGLE	51 -	11 -	15:	C.W.	270-22-49.1	C.C.W.	89-37-10.9	2633.135
ANGLE	11 -	15 -	19:	C.W.	179-35-34.2	C.C.W.	180-24-25.8	2643.061
ANGLE	15 -	19 -	59:	C.W.	270-25-54.4	C.C.W.	89-34-05.6	2639.602
ANGLE	19 -	59 -	99:	C.W.	179-45-14.9	C.C.W.	180-14-45.1	2642.619
ANGLE	59 -	99 -	87:	C.W.	269-20-13.7	C.C.W.	90-39-46.3	392.911
ANGLE	99 -	87 -	86:	C.W.	180-00-00.0	C.C.W.	180-00-00.0	379.813
ANGLE	87 -	86 -	85:	C.W.	180-00-00.0	C.C.W.	180-00-00.0	368.026
ANGLE	86 -	85 -	96:	C.W.	180-00-00.0	C.C.W.	180-00-00.0	784.511
ANGLE	85 -	96 -	95:	C.W.	181-07-18.8	C.C.W.	178-52-41.2	698.928
ANGLE	96 -	95 -	91:	C.W.	179-52-05.8	C.C.W.	180-07-54.2	2627.705
ANGLE	95 -	91 -	51:	C.W.	269-32-49.1	C.C.W.	90-27-10.9	2640.789
ANGLE	91 -	51 -	11:	C.W.	179-58-00.0	C.C.W.	180-02-00.0	2644.680

Coordinates stored

Friday September 8, 1995

2:47 PM