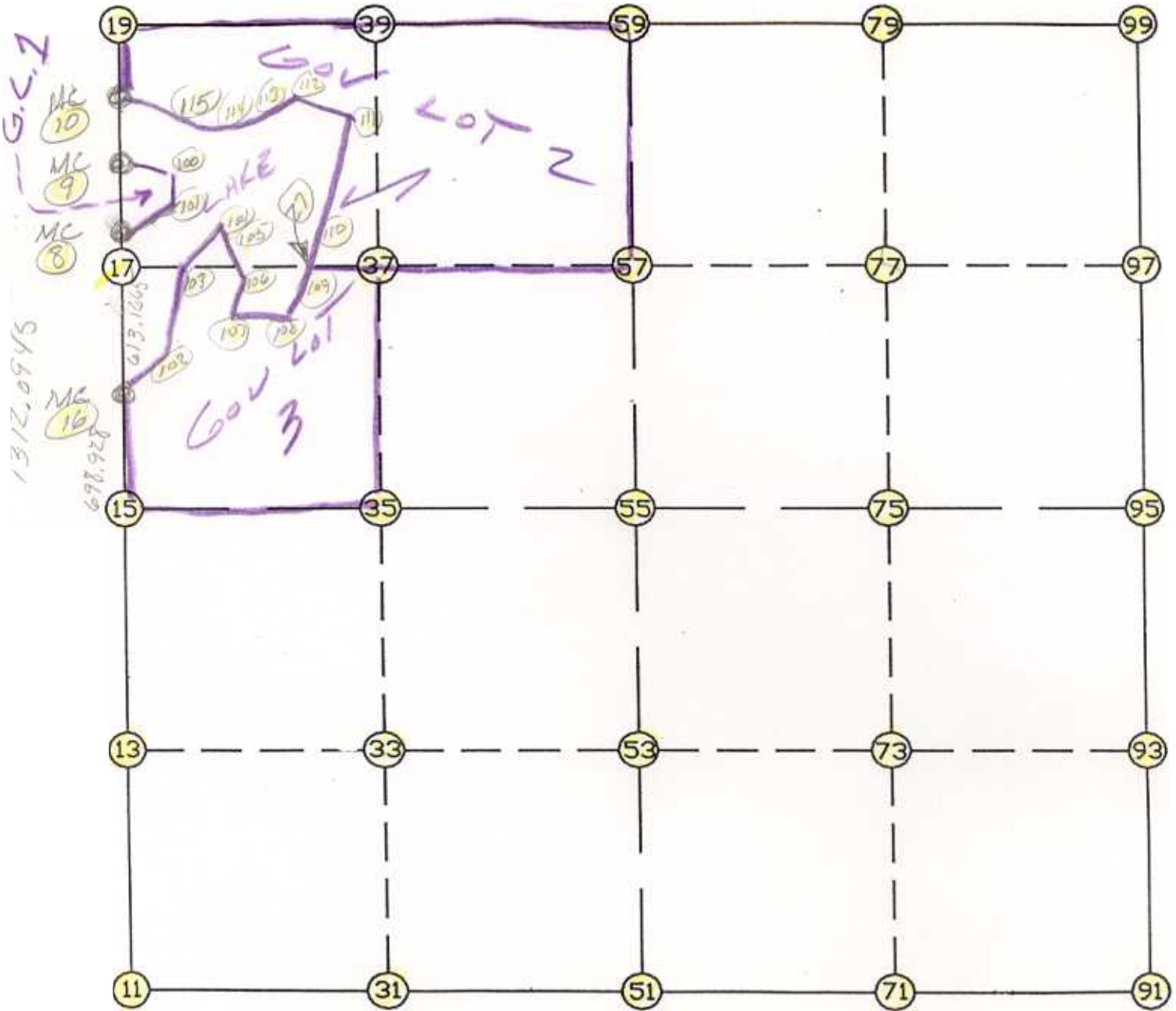


WRIGHT COUNTY SURVEYORS OFFICE

Public Works Building
Buffalo, Minn. 55313

SECTION 27 TOWNSHIP 2 RANGE 25



REMARKS

THE INFORMATION SHOWN HEREON IS A COMPILATION OF WRIGHT COUNTY RECORDS AND IS INTENDED TO BE USED FOR COMPARISON PURPOSES ONLY. THE COUNTY IS NOT RESPONSIBLE FOR ANY INACCURACIES HEREIN CONTAINED.

==== COGO ====

Friday September 8, 1995

2:11 PM

Coordinate File Name: SEC-27.CRD Lowest pt R: 1 Highest pt R: 115

Job R : 95-75

Description: COUNTY COORDINATES SECTION 27 T121 R25

R of chars. in point descr.: 10

FROM TYPE BEARING DISTANCE TO NORTHING EASTING

LIST POINTS

POINT NORTHING EASTING ELEVATION DESCR

8 204365.679222 514360.944478
9 204733.617359 514352.903085
10 205113.339682 514344.604146
11 200254.751491 514391.681847
13 201568.590432 514385.677664
15 202882.429374 514379.673482
16 203581.355517 514378.086095
17 204194.375629 514364.688366
19 205506.156895 514336.019014
27 204176.119306 515421.904887
31 200227.948029 515714.875347
33 201542.427595 515704.317161
35 202856.907162 515693.758974
37 204171.744063 515675.273549
39 205486.380268 515656.790946
51 200201.144567 517038.068848
53 201516.264759 517022.956657
55 202831.384950 517007.844466
57 204148.994296 516992.703672
59 205466.603641 516977.562878
71 200174.322006 518354.426933
73 201490.086877 518338.461354
75 202805.851749 518322.495775
77 204126.504112 518310.927799
79 205447.156474 518299.359822
91 200147.499444 519670.785017
93 201463.908996 519653.966050
95 202780.318548 519637.147084
97 204104.013928 519629.151925
99 205427.709307 519621.156767
100 204642.303919 514457.999207
101 204418.571271 514430.034873
102 203639.180518 514474.385437
103 204113.159326 514575.485959
104 204342.325540 514761.315209
105 204256.210632 514817.233181
106 204053.738498 514936.476422
107 203796.078375 514895.760502
108 203821.857832 515192.919951
109 204041.125280 515390.622414
110 204571.059441 515513.425265
111 204897.021844 515524.923232
112 205067.569849 515298.425648
113 205053.658870 515036.177585
114 205003.622129 514828.256859
115 205070.274263 514602.855890

START					11	200254.751	514391.682
11	INV N	0-15-42.6 W	2627.705		15	202882.429	514379.673
15	INV N	0-07-48.5 W	698.928		16	203581.356	514378.086
16	INV N	1-15-07.3 W	784.511		8	204365.679	514360.944
8	INV N	1-15-07.3 W	368.026		9	204733.617	514352.903
9	INV N	1-15-07.3 W	379.813		10	205113.340	514344.604
10	INV N	1-15-07.3 W	392.911		19	205506.157	514336.019
19	INV S	89-08-31.7 E	2641.840		59	205466.604	516977.563
59	INV S	89-09-25.5 E	2643.880		99	205427.709	519621.157
99	INV S	0-20-45.8 E	2647.439		95	202780.319	519637.147
95	INV S	0-43-55.2 E	2633.034		91	200147.499	519670.785
91	INV N	88-49-57.7 W	2633.263		51	200201.145	517038.069
51	INV N	88-50-22.3 W	2646.930		11	200254.751	514391.682
START					51	200201.145	517038.069
51	INV N	0-39-30.1 W	2630.414		55	202831.385	517007.844
55	INV N	0-39-30.1 W	2635.393		59	205466.604	516977.563
START					15	202882.429	514379.673
15	INV S	88-53-14.4 E	2628.667		55	202831.385	517007.844
55	INV S	88-53-14.4 E	2629.798		95	202780.319	519637.147

POINT-POINT ANGLES

ANGLE	51 -	11 -	15:	C.W.	268-34-39.7	C.C.W.	91-25-20.3	2627.705
ANGLE	11 -	15 -	16:	C.W.	180-07-54.2	C.C.W.	179-52-05.8	698.928
ANGLE	15 -	16 -	8:	C.W.	178-52-41.2	C.C.W.	181-07-18.8	784.511
ANGLE	16 -	8 -	9:	C.W.	180-00-00.0	C.C.W.	180-00-00.0	368.026
ANGLE	8 -	9 -	10:	C.W.	180-00-00.0	C.C.W.	180-00-00.0	379.813
ANGLE	9 -	10 -	19:	C.W.	180-00-00.0	C.C.W.	180-00-00.0	392.911
ANGLE	10 -	19 -	59:	C.W.	272-06-35.5	C.C.W.	87-53-24.5	2641.840
ANGLE	19 -	59 -	99:	C.W.	179-59-06.2	C.C.W.	180-00-53.8	2643.880
ANGLE	59 -	99 -	95:	C.W.	268-48-39.7	C.C.W.	91-11-20.3	2647.439
ANGLE	99 -	95 -	91:	C.W.	179-36-50.7	C.C.W.	180-23-09.3	2633.034
ANGLE	95 -	91 -	51:	C.W.	271-53-57.5	C.C.W.	88-06-02.5	2633.263
ANGLE	91 -	51 -	11:	C.W.	179-59-35.3	C.C.W.	180-00-24.7	2646.930

Coordinates stored

Friday September 8, 1995

2:13 PM