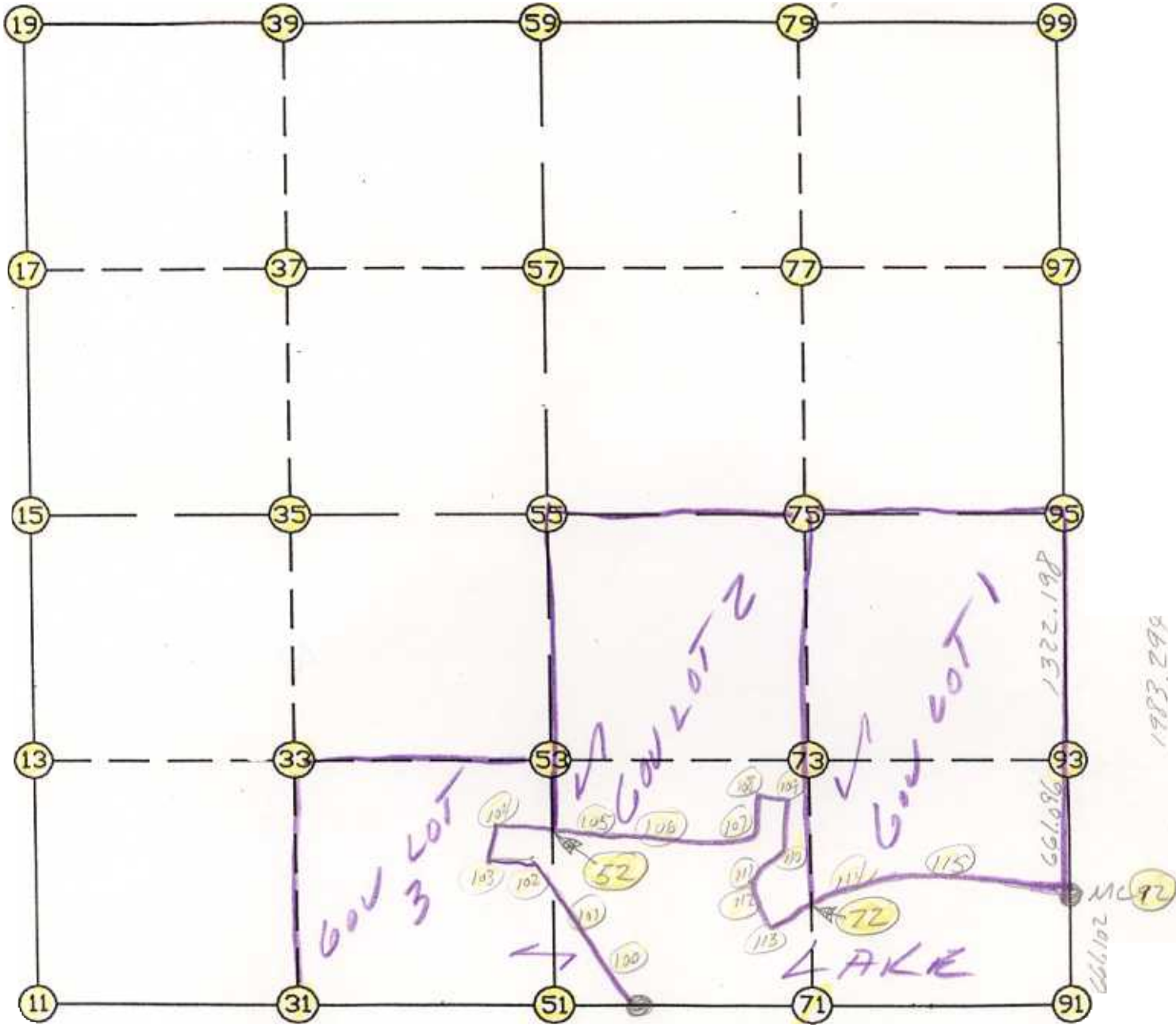


WRIGHT COUNTY SURVEYORS OFFICE

Public Works Building
Buffalo, Minn. 55313

SECTION 25 TOWNSHIP 121 RANGE 25



REMARKS

THE INFORMATION SHOWN HEREON IS A COMPILATION OF WRIGHT COUNTY RECORDS AND IS INTENDED TO BE USED FOR COMPARISON PURPOSES ONLY. THE COUNTY IS NOT RESPONSIBLE FOR ANY INACCURACIES HEREIN CONTAINED.

==== COGO =====

Friday September 8, 1995

1:40 PM

Coordinate File Name: SEC-25.CRD Lowest pt R: 1 Highest pt R: 115

Job R : 95-75

Description: COUNTY COORDINATES SECTION 25 T121 R25

R of chars. in point descr.: 10

FROM	TYPE	BEARING	DISTANCE	TO	NORTHING	EASTING
------	------	---------	----------	----	----------	---------

LIST POINTS

POINT	NORTHING	EASTING	ELEVATION	DESCR
-------	----------	---------	-----------	-------

11	200200.957810	524960.928830		
13	201536.361843	524937.870739		
15	202871.765876	524914.812647		
17	204192.214980	524899.700050		
19	205512.664085	524884.587452		
31	200216.984853	526321.088395		
33	201552.901742	526292.180508		
35	202888.818630	526263.272621		
37	204213.896670	526238.424904		
39	205538.974710	526213.577186		
51	200233.011897	527681.247961		
52	201112.882118	527658.364416		
53	201569.441641	527646.490278		
55	202905.871385	527611.732596		
57	204235.578360	527577.149758		
59	205565.285335	527542.566921		
61	200236.507161	527827.433181		
71	200264.148876	528983.514773		
72	200799.380294	528976.468450		
73	201593.463188	528966.014346		
75	202922.776450	528948.513933		
77	204243.899648	528930.268111		
79	205565.022847	528912.022288		
91	200295.285855	530285.781585		
92	200956.387441	530285.560345		
93	201617.483527	530285.471987		
95	202939.681515	530285.295270		
97	204252.220937	530283.386463		
99	205564.760358	530281.477656		
100	200444.413674	527784.942984		
101	200757.202224	527688.871261		
102	200956.787640	527616.044240		
103	200941.301710	527479.866990		
104	201074.878134	527479.787374		
105	201101.078993	527602.902674		
106	201040.417108	527724.528525		
107	201117.908114	528597.444125		
108	201268.042261	528615.773211		
109	201338.340078	528766.341060		
110	201302.866202	528858.737079		
111	200985.450414	528755.066382		
112	200912.515088	528461.742398		
113	200717.918941	528719.661218		
114	200940.025796	529419.853946		
115	200989.012110	529974.603781		

START					11	200200.958	524960.929
11	INV N	0-59-21.2 W	2671.206		15	202871.766	524914.813
15	INV N	0-39-20.6 W	2641.071		19	205512.664	524884.587
19	INV N	88-51-57.0 E	2658.500		59	205565.285	527542.567
59	INV S	89-59-20.5 E	2738.911		99	205564.760	530281.478
99	INV S	0-05-00.0 E	2625.082		95	202939.682	530285.295
95	INV S	0-00-27.6 E	1983.294		92	200956.387	530285.560
92	INV S	0-01-09.0 E	661.102		91	200295.286	530285.782
91	INV S	88-37-49.2 W	2459.051		61	200236.507	527827.433
61	INV S	88-37-49.2 W	146.227		51	200233.012	527681.248
51	INV S	89-19-29.7 W	2720.508		11	200200.958	524960.929
START					51	200233.012	527681.248
51	INV N	1-29-23.3 W	2673.763		55	202905.871	527611.733
55	INV N	1-29-23.3 W	2660.313		59	205565.285	527542.567
START					15	202871.766	524914.813
15	INV N	89-16-31.7 E	2697.136		55	202905.871	527611.733
55	INV N	89-16-31.7 E	2673.776		95	202939.682	530285.295

POINT-POINT ANGLES

ANGLE	51 -	11 -	15:	C.W.	269-41-09.2	C.C.W.	90-18-50.8	2671.206
ANGLE	11 -	15 -	19:	C.W.	180-20-00.6	C.C.W.	179-39-59.4	2641.071
ANGLE	15 -	19 -	59:	C.W.	269-31-17.6	C.C.W.	90-28-42.4	2658.500
ANGLE	19 -	59 -	99:	C.W.	181-08-42.5	C.C.W.	178-51-17.5	2738.911
ANGLE	59 -	99 -	95:	C.W.	269-54-20.5	C.C.W.	90-05-39.5	2625.082
ANGLE	99 -	95 -	92:	C.W.	180-04-32.4	C.C.W.	179-55-27.6	1983.294
ANGLE	95 -	92 -	91:	C.W.	179-59-18.5	C.C.W.	180-00-41.5	661.102
ANGLE	92 -	91 -	61:	C.W.	268-38-58.2	C.C.W.	91-21-01.8	2459.051
ANGLE	91 -	61 -	51:	C.W.	180-00-00.0	C.C.W.	180-00-00.0	146.227
ANGLE	61 -	51 -	11:	C.W.	180-41-40.5	C.C.W.	179-18-19.5	2720.508

Coordinates stored Friday September 8, 1995 1:41 PM