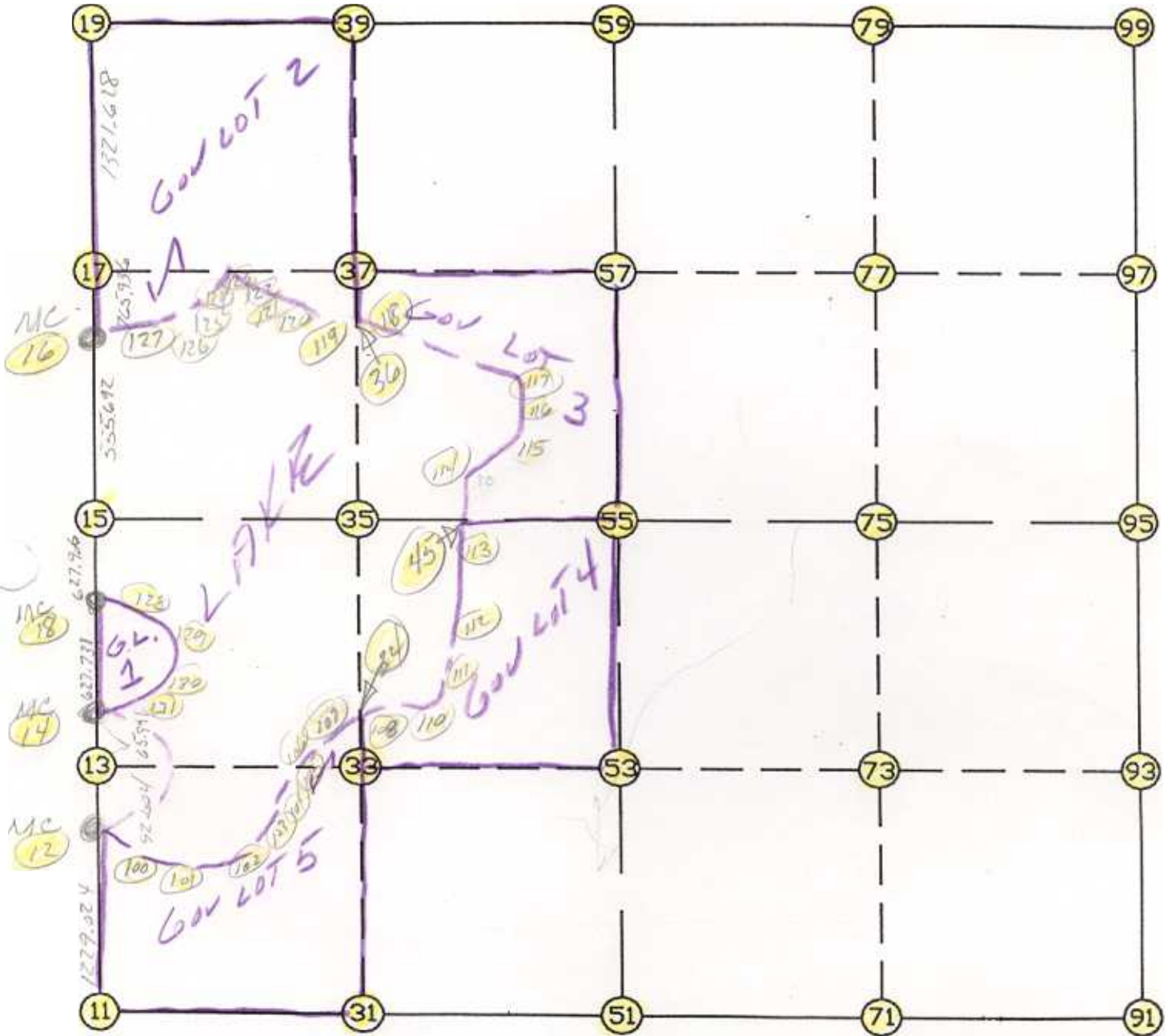


WRIGHT COUNTY SURVEYORS OFFICE

Public Works Building
Buffalo, Minn. 55313

SECTION 20 TOWNSHIP 121 RANGE 25



REMARKS

1/4 ROADWAY BETWEEN SECTION CORNERS

THE INFORMATION SHOWN HEREON IS A COMPILATION OF WRIGHT COUNTY RECORDS AND IS INTENDED TO BE USED FOR COMPARISON PURPOSES ONLY. THE COUNTY IS NOT RESPONSIBLE FOR ANY INACCURACIES HEREIN CONTAINED.

of chars. in point descr.: 10

 FROM TYPE BEARING DISTANCE TO NORTHING EASTING

LIST POINTS

POINT	NORTHING	EASTING	ELEVATION	DESCR
11	205465.961158	503706.431098		
12	206692.408397	503785.977305		
13	206784.946759	503789.463321		
14	206850.890985	503791.947508		
15	208105.637991	503839.215125		
16	208660.936614	503860.133798		
17	209426.582929	503881.197442		
18	207478.177050	503815.578022		
19	210747.711111	503917.542910		
31	205466.307568	505060.397482		
33	206785.429296	505111.516316		
34	207316.395109	505132.092396		
35	208105.409924	505162.668435		
36	208924.648845	505185.960131		
37	209416.100181	505199.932533		
39	210726.859640	505237.198598		
45	208105.375048	505365.049247		
51	205466.653979	506414.363866		
53	206785.917918	506450.242806		
55	208105.181857	506486.121745		
57	209405.595013	506521.488016		
59	210706.008170	506556.854287		
71	205464.911803	507734.174267		
73	206784.932141	507775.682143		
75	208104.952478	507817.190019		
77	209414.289376	507850.668668		
79	210723.626275	507884.147318		
91	205463.169628	509053.984669		
93	206783.946363	509101.121480		
95	208104.723098	509148.258292		
97	209422.983739	509179.849321		
99	210741.244380	509211.440350		
100	206593.766787	503921.869754		
101	206533.940565	504100.808376		
102	206541.990306	504203.186936		
103	206618.941070	504303.556026		
104	206643.676469	504420.018572		
105	206775.408520	504556.618946		
106	206903.908356	504709.969986		
107	207073.567186	504831.208509		
108	207386.375346	505218.803698		
109	207486.960986	505311.069896		
110	207627.375947	505375.180299		
111	207729.184015	505375.230742		
112	207840.640710	505312.248208		
113	207937.563639	505338.268555		
114	208176.120239	505376.339332		
115	208336.346307	505526.001596		
116	208601.692371	505599.964908		
117	208808.686998	505505.875727		
118	208922.507984	505308.953471		
119	208925.823975	505118.448466		
120	209040.936459	504941.384633		
121	209192.657752	504376.387135		
122	209265.772036	504273.954242		
123	209367.342993	504220.009998		
124	209251.461828	504091.468106		
125	208955.981905	504063.448243		

126	208765.071099	504016.040459
127	208683.515592	503918.931215
128	207411.997243	503881.545852
129	207210.542364	503919.573193
130	207033.326886	503896.923573
131	206877.173983	503828.186398

START					11	205465.961	503706.431
11	INV N	3-42-39.4 E	1229.024	12	206692.408	503785.977	
12	INV N	2-09-26.5 E	158.595	14	206850.891	503791.948	
14	INV N	2-09-26.5 E	627.731	18	207478.177	503815.578	
18	INV N	2-09-26.5 E	627.906	15	208105.638	503839.215	
15	INV N	2-09-26.5 E	555.692	16	208660.937	503860.134	
16	INV N	1-34-33.1 E	2087.564	19	210747.711	503917.543	
19	INV S	89-05-41.1 E	2639.641	59	210706.008	506556.854	
59	INV N	89-14-22.3 E	2654.820	99	210741.244	509211.440	
99	INV S	1-22-22.0 W	2637.278	95	208104.723	509148.258	
95	INV S	2-02-38.2 W	2643.235	91	205463.170	509053.985	
91	INV N	89-55-27.7 W	2639.623	51	205466.654	506414.364	
51	INV S	89-59-07.2 W	2707.933	11	205465.961	503706.431	
START				51	205466.654	506414.364	
51	INV N	1-33-28.2 E	2639.503	55	208105.182	506486.122	
55	INV N	1-33-28.2 E	2601.788	59	210706.008	506556.854	
START				15	208105.638	503839.215	
15	INV S	89-59-24.5 E	2646.907	55	208105.182	506486.122	
55	INV S	89-59-24.5 E	2662.137	95	208104.723	509148.258	

POINT-POINT ANGLES

ANGLE	51 -	11 -	12:	C.W.	273-43-32.2	C.C.W.	86-16-27.8	1229.024
ANGLE	11 -	12 -	14:	C.W.	178-26-47.1	C.C.W.	181-33-12.9	158.595
ANGLE	12 -	14 -	18:	C.W.	180-00-00.0	C.C.W.	180-00-00.0	627.731
ANGLE	14 -	18 -	15:	C.W.	180-00-00.0	C.C.W.	180-00-00.0	627.906
ANGLE	18 -	15 -	16:	C.W.	180-00-00.0	C.C.W.	180-00-00.0	555.692
ANGLE	15 -	16 -	19:	C.W.	179-25-06.6	C.C.W.	180-34-53.4	2087.564
ANGLE	16 -	19 -	59:	C.W.	269-19-45.7	C.C.W.	90-40-14.3	2639.641
ANGLE	19 -	59 -	99:	C.W.	178-20-03.4	C.C.W.	181-39-56.6	2654.820
ANGLE	59 -	99 -	95:	C.W.	272-07-59.8	C.C.W.	87-52-00.2	2637.278
ANGLE	99 -	95 -	91:	C.W.	180-40-16.2	C.C.W.	179-19-43.8	2643.235
ANGLE	95 -	91 -	51:	C.W.	268-01-54.1	C.C.W.	91-58-05.9	2639.623
ANGLE	91 -	51 -	11:	C.W.	179-54-35.0	C.C.W.	180-05-25.0	2707.933

Coordinates stored

Friday September 8, 1995

12:39 PM