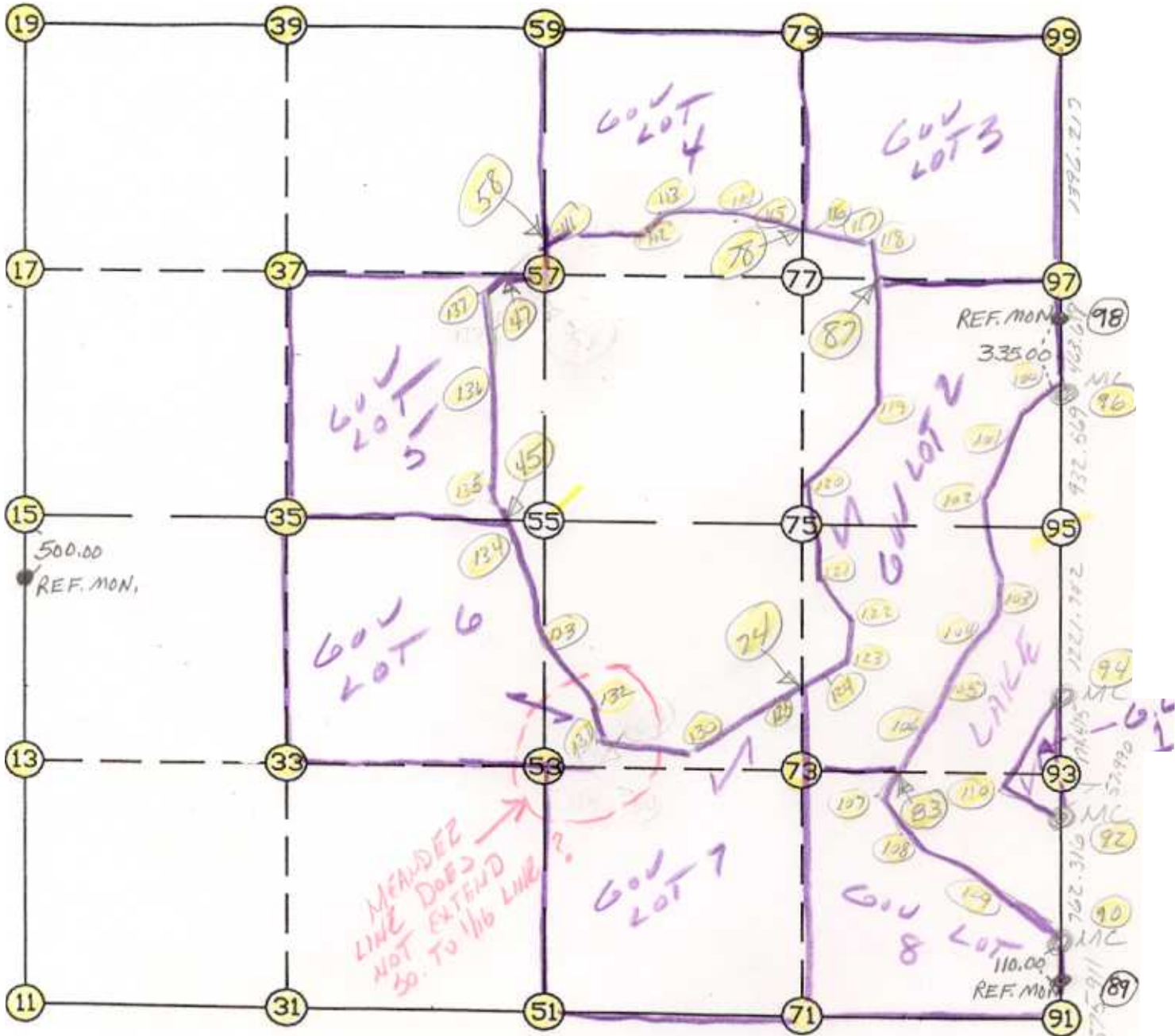


WRIGHT COUNTY SURVEYORS OFFICE

Public Works Building
Buffalo, Minn. 55313

SECTION 17 TOWNSHIP 121 RANGE 25



REMARKS

USED MIDWAY BETWEEN SECTION CORNERS
FOR ELY POSITION

THE INFORMATION SHOWN HEREON IS A COMPILATION OF WRIGHT COUNTY RECORDS AND IS INTENDED TO BE USED FOR COMPARISON PURPOSES ONLY. THE COUNTY IS NOT RESPONSIBLE FOR ANY INACCURACIES HEREIN CONTAINED.

Job R : 95-75

Description: COUNTY COORDINATES SECTION 17 T121 R25

R of chars. in point descr.: 10

FROM TYPE	BEARING	DISTANCE	TO	NORTHING	EASTING
LIST POINTS					
POINT	NORTHING	EASTING	ELEVATION	DESCR	
11	210747.711111	503917.542910			
13	212076.077307	503920.453731			
15	213404.443503	503923.364551			
17	214740.210590	503878.685208			
19	216075.977677	503834.005866			
31	210726.859640	505237.198598			
33	212081.636980	505231.343631			
35	213436.414319	505225.488663			
37	214787.509658	505195.916762			
39	216138.604996	505166.344860			
45	213470.360805	506608.078896			
47	214833.811844	506485.386188			
51	210706.008170	506556.854287			
53	212087.196653	506542.233531			
55	213468.385135	506527.612775			
56	214859.016764	506512.892058			
57	214834.808725	506513.148315			
58	214859.016764	506512.892058			
59	216201.232314	506498.683855			
63	212094.263632	506915.946580			
71	210723.626275	507884.147318			
73	212112.282914	507868.834718			
74	212573.672838	507863.747011			
75	213500.939946	507853.522114			
78	215182.544912	507834.996056			
79	216263.489071	507823.087413			
83	212124.700557	508525.499366			
87	214896.123601	508227.093208			
90	211317.117889	509204.905449			
91	210741.244380	509211.440350			
92	212079.383798	509196.144322			
93	212137.369968	509195.477856			
94	212311.833445	509193.472655			
95	213533.494756	509179.431453			
96	214466.002165	509168.713651			
97	214929.619979	509163.423022			
99	216325.745827	509147.490970			
100	214438.015406	509135.331011			
101	213741.211495	508949.112843			
102	213734.588874	508944.645429			
103	213222.583645	508968.710068			
104	212977.832807	508879.575392			
105	212813.356072	508807.993415			
106	212458.710214	508660.847425			
107	211775.172356	508383.862851			
108	211615.335261	508460.546331			
109	211561.455259	508569.219503			
110	212102.669897	509103.138850			
111	214954.046416	506616.596938			
112	215092.971673	506993.209407			
113	215230.695009	507156.791315			
114	215252.511879	507538.486461			
115	215224.318900	507719.244390			
116	215152.301413	507918.797855			
117	215090.912403	508070.622221			
118	214981.966785	508215.099214			
119	214463.739913	508287.505775			
120	213746.283533	507967.559681			
POINT	NORTHING	EASTING	ELEVATION	DESCR	

121	213293.288352	507998.933682
122	213059.337526	508245.157387
123	212817.256994	508223.902863
124	212793.463197	508202.099602
125	212543.639916	507817.513331
126	212413.279638	507711.938821
127	212339.726932	507455.636861
128	212288.730872	507409.718513
129	212283.563810	507262.487945
130	212108.436225	507061.029116
131	212131.908539	506912.624195
132	212642.729711	506867.541215
133	213014.120186	506690.063398
134	213449.112651	506620.861324
135	213697.483180	506471.447021
136	213812.211666	506352.569698
137	214733.153442	506375.538709

START				11	210747.711	503917.543
11	INV N	0-07-32.0 E	2656.739	15	213404.444	503923.365
15	INV N	1-54-56.7 W	2673.028	19	216075.978	503834.006
19	INV N	87-18-31.5 E	2667.620	59	216201.232	506498.684
59	INV N	87-18-31.2 E	2651.732	99	216325.746	509147.491
99	INV S	0-39-13.7 E	1859.865	96	214466.002	509168.714
96	INV S	0-39-30.6 E	932.569	95	213533.495	509179.431
95	INV S	0-39-30.6 E	1221.742	94	212311.833	509193.473
94	INV S	0-39-30.6 E	232.465	92	212079.384	509196.144
92	INV S	0-39-30.6 E	762.316	90	211317.118	509204.905
90	INV S	0-39-00.6 E	575.911	91	210741.244	509211.440
91	INV S	89-14-22.3 W	2654.820	51	210706.008	506556.854
51	INV N	89-05-41.1 W	2639.641	11	210747.711	503917.543
START				51	210706.008	506556.854
51	INV N	0-36-23.4 W	2762.532	55	213468.385	506527.613
55	INV N	0-36-23.4 W	2733.000	59	216201.232	506498.684
START				15	213404.444	503923.365
15	INV N	88-35-36.6 E	2605.033	55	213468.385	506527.613
55	INV N	88-35-36.6 E	2652.618	95	213533.495	509179.431

POINT-POINT ANGLES

ANGLE	51 -	11 -	15:	C.W.	269-13-13.1	C.C.W.	90-46-46.9	2656.739
ANGLE	11 -	15 -	19:	C.W.	177-57-31.3	C.C.W.	182-02-28.7	2673.028
ANGLE	15 -	19 -	59:	C.W.	269-13-28.2	C.C.W.	90-46-31.8	2667.620
ANGLE	19 -	59 -	99:	C.W.	179-59-59.6	C.C.W.	180-00-00.4	2651.732
ANGLE	59 -	99 -	96:	C.W.	272-02-15.1	C.C.W.	87-57-44.9	1859.865
ANGLE	99 -	96 -	95:	C.W.	179-59-43.1	C.C.W.	180-00-16.9	932.569
ANGLE	96 -	95 -	94:	C.W.	180-00-00.0	C.C.W.	180-00-00.0	1221.742
ANGLE	95 -	94 -	92:	C.W.	180-00-00.0	C.C.W.	180-00-00.0	232.465
ANGLE	94 -	92 -	90:	C.W.	180-00-00.0	C.C.W.	180-00-00.0	762.316
ANGLE	92 -	90 -	91:	C.W.	180-00-30.1	C.C.W.	179-59-29.9	575.911
ANGLE	90 -	91 -	51:	C.W.	269-53-22.8	C.C.W.	90-06-37.2	2654.820
ANGLE	91 -	51 -	11:	C.W.	181-39-56.6	C.C.W.	178-20-03.4	2639.641

Coordinates stored Thursday September 7 1995 3:36 PM