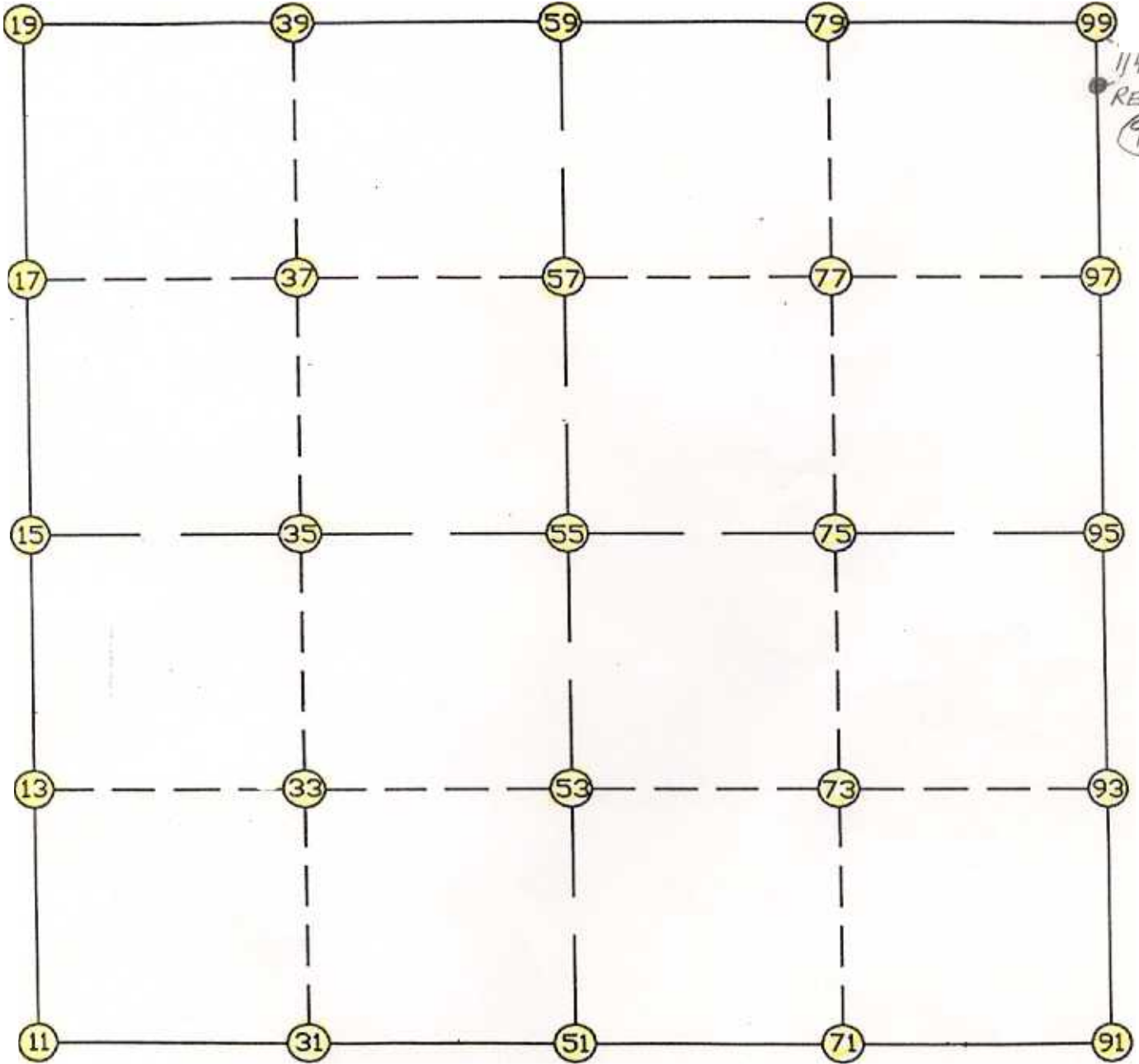


WRIGHT COUNTY SURVEYORS OFFICE

Public Works Building
Buffalo, Minn. 55313

SECTION 14 TOWNSHIP 2 RANGE 25



REMARKS

THE INFORMATION SHOWN HEREON IS A COMPILATION OF WRIGHT COUNTY RECORDS AND IS INTENDED TO BE USED FOR COMPARISON PURPOSES ONLY. THE COUNTY IS NOT RESPONSIBLE FOR ANY INACCURACIES HEREIN CONTAINED.

Coordinate File Name: SEC-14.CRD Lowest p R 1 Highest pt R: 99
 Job R : 95-75
 Description: COUNTY COORDINATES SECTION 14 121 R25
 R of chars. in point descr.: 10

 FROM TYPE BEARING DISTANCE TO NORTHING EASTING

LIST POINTS
 POINT NORTHING EASTING ELEVATION DESCR

11	210705.596145	519787.231848		
13	212028.582366	519768.790209		
15	213351.568586	519750.348569		
17	214652.203317	519771.094917		
19	215952.838048	519791.841266		
31	210718.616798	521110.352714		
33	212044.068072	521101.034638		
35	213369.519346	521091.716562		
37	214675.128060	521101.993750		
39	215980.736775	521112.270938		
51	210731.637451	522433.473580		
53	212059.553779	522433.279068		
55	213387.470106	522433.084556		
57	214698.052804	522432.892583		
59	216008.635501	522432.700610		
71	210755.473066	523756.088480		
73	212080.302941	523754.508281		
75	213405.132816	523752.928082		
77	214720.785859	523751.321041		
79	216036.438902	523749.714001		
91	210779.308680	525078.703380		
93	212101.052103	525075.737494		
95	213422.795526	525072.771607		
97	214743.518914	525069.749500		
99	216064.242303	525066.727392		

START				11	210705.596	519787.232
11	INV N	0-47-55.0 W	2646.229	15	213351.569	519750.349
15	INV N	0-54-49.8 E	2601.600	19	215952.838	519791.841
19	INV N	88-47-22.6 E	2641.449	59	216008.636	522432.701
59	INV N	88-47-26.2 E	2634.614	99	216064.242	525066.727
99	INV S	0-07-52.0 E	2641.454	95	213422.796	525072.772
95	INV S	0-07-42.8 E	2643.494	91	210779.309	525078.703
91	INV S	88-58-03.2 W	2645.659	51	210731.637	522433.474
51	INV S	89-26-10.2 W	2646.370	11	210705.596	519787.232
START				51	210731.637	522433.474
51	INV N	0-00-30.2 W	2655.833	55	213387.470	522433.085
55	INV N	0-00-30.2 W	2621.165	59	216008.636	522432.701
START				15	213351.569	519750.349
15	INV N	89-13-59.8 E	2682.976	55	213387.470	522433.085
55	INV N	89-13-59.8 E	2639.923	95	213422.796	525072.772

POINT-POINT ANGLES

ANGLE	51 - 11 - 15:	C.W. 269-45-54.7	C.C.W. 90-14-05.3	2646.229
ANGLE	11 - 15 - 19:	C.W. 181-42-44.9	C.C.W. 178-17-15.1	2601.600
ANGLE	15 - 19 - 59:	C.W. 267-52-32.7	C.C.W. 92-07-27.3	2641.449
ANGLE	19 - 59 - 99:	C.W. 180-00-03.6	C.C.W. 179-59-56.4	2634.614
ANGLE	59 - 99 - 95:	C.W. 271-04-41.8	C.C.W. 88-55-18.2	2641.454
ANGLE	99 - 95 - 91:	C.W. 180-00-09.1	C.C.W. 179-59-50.9	2643.494
ANGLE	95 - 91 - 51:	C.W. 269-05-46.0	C.C.W. 90-54-14.0	2645.659
ANGLE	91 - 51 - 11:	C.W. 180-28-07.1	C.C.W. 179-31-52.9	2646.370