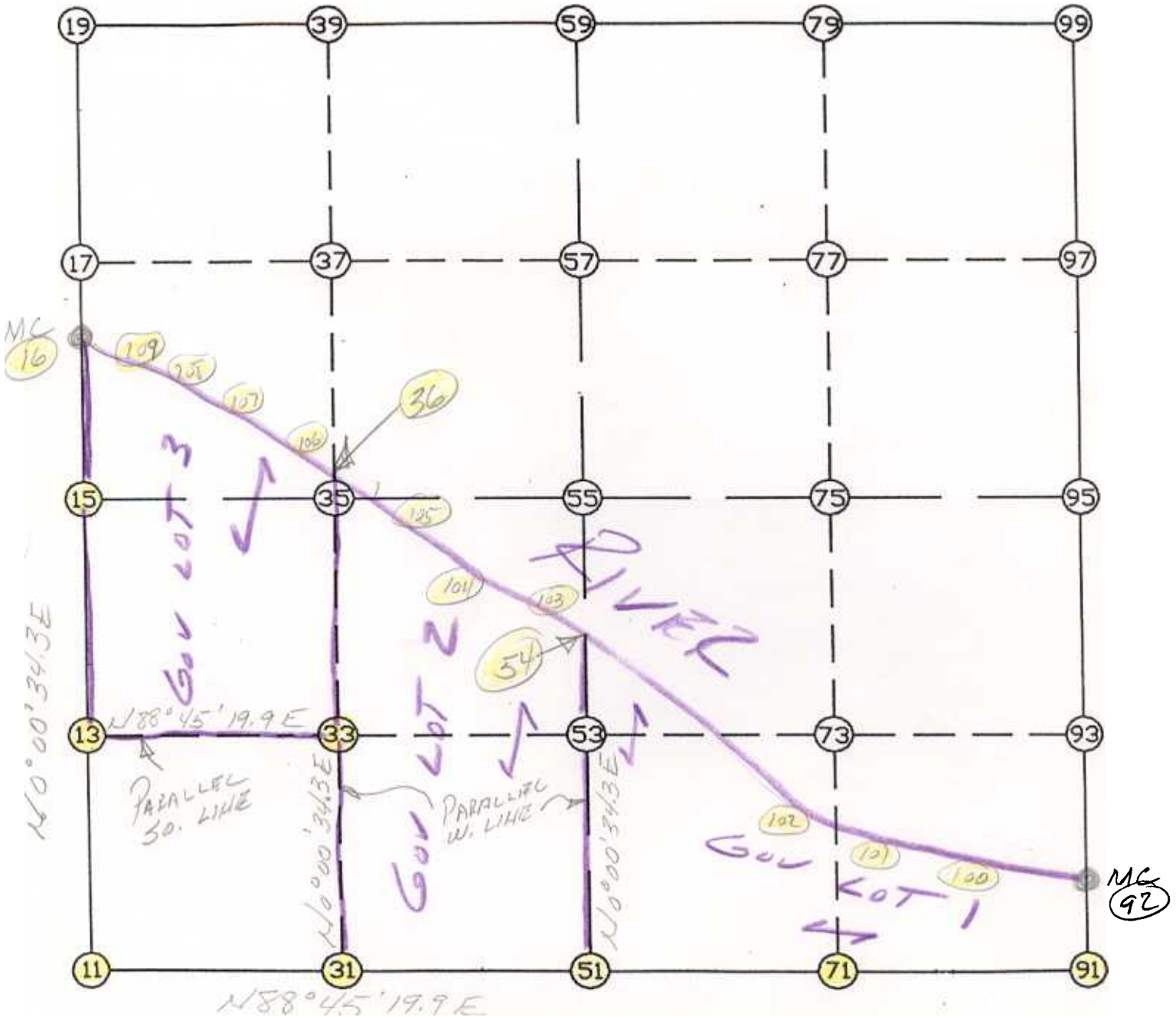


WRIGHT COUNTY SURVEYORS OFFICE

Public Works Building
Buffalo, Minn. 55313

SECTION 12 TOWNSHIP 17 RANGE 25



REMARKS

FOR THIS BREAKDOWN THE N-S 1/4 LINE
& 1/16TH LINE ARE PARALLEL WITH
WEST SECTION LINE.

THE INFORMATION SHOWN HEREON IS A COMPILATION OF WRIGHT COUNTY RECORDS AND IS INTENDED TO BE USED FOR COMPARISON PURPOSES ONLY. THE COUNTY IS NOT RESPONSIBLE FOR ANY INACCURACIES HEREIN CONTAINED.

