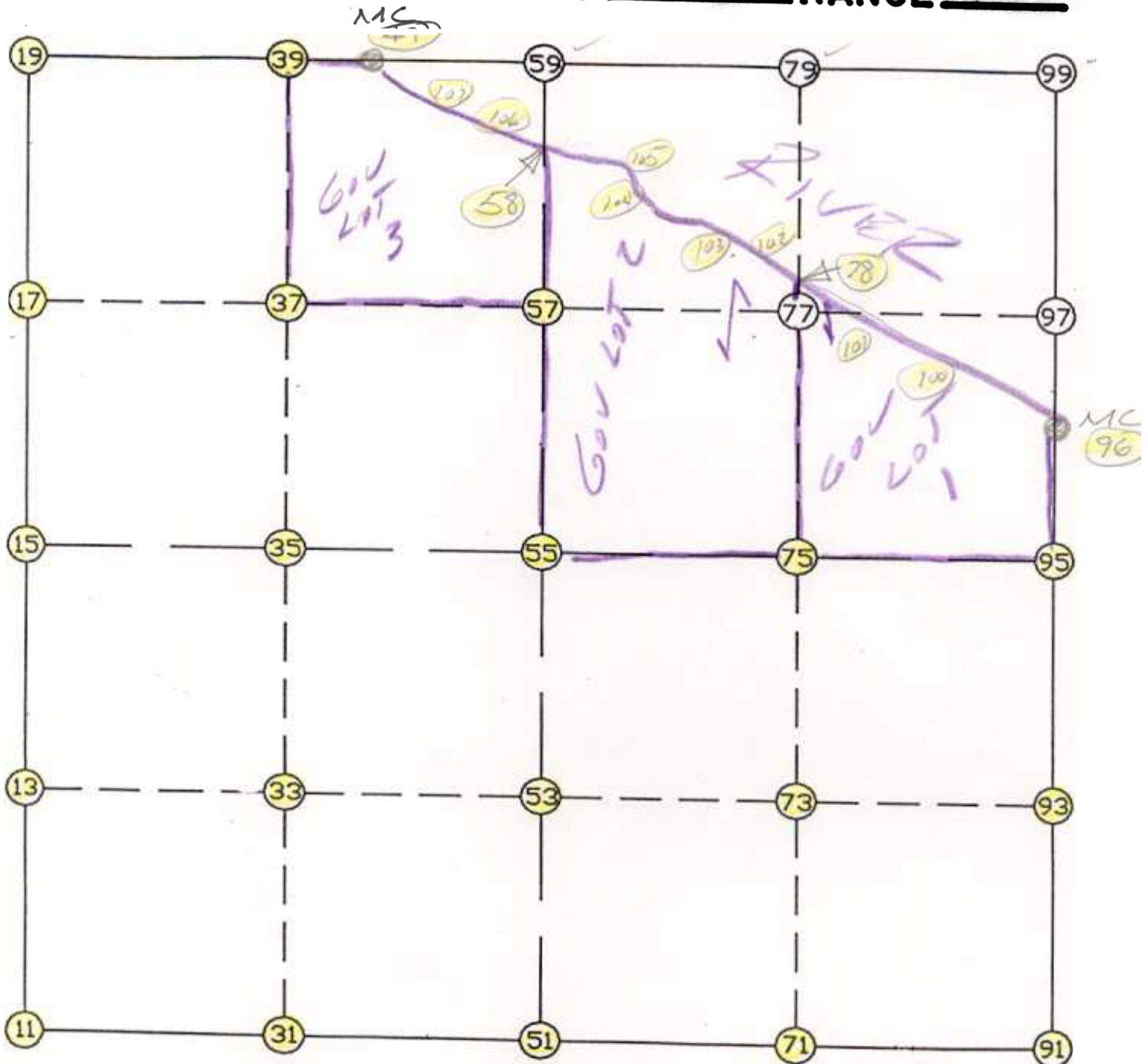


WRIGHT COUNTY SURVEYORS OFFICE  
 Public Works Building  
 Buffalo, Minn. 55313

SECTION 11 TOWNSHIP 121 RANGE 25



REMARKS

NORTH LINE NOT MONUMENTED - LINE SHOWN FOR THIS  
BREAKDOWN RUN PARALLEL WITH SOUTH LINE OF SECTION  
 N-S 1/4 LINE RUN TO MIDPOINT (MEAN BEARING) - LOCAL SURVEY.  
 MAY OR MAY NOT FIT THIS LINE?  
 THE INFORMATION SHOWN HEREON IS A COMPILATION OF WRIGHT COUNTY RECORDS  
 AND IS INTENDED TO BE USED FOR COMPARISON PURPOSES ONLY. THE  
 COUNTY IS NOT RESPONSIBLE FOR ANY INACCURACIES HEREIN CONTAINED.

COGO =====

Thursday September 7, 1995

12:01 PM

Coordinate File Name: SEC-11.CRD    Lowest pt R:    1    Highest pt R:    108

Job R            : 95-75

Description: COUNTY COORDINATES SECTION 11 T121 R25

R of chars. in point descr.: 10

FROM TYPE	BEARING	DISTANCE	TO	NORTHING	EASTING
-----					
LIST POINTS					
POINT	NORTHING	EASTING	ELEVATION	DESCR	
-----					
11	215952.838048	519791.841266			
13	217283.476359	519796.793659			
15	218614.114670	519801.746052			
17	219935.550380	519780.131781			
19	221256.986090	519758.517510			
31	215980.736775	521112.270938			
33	217308.692750	521112.294012			
35	218636.648725	521112.317086			
37	219960.833200	521099.053756			
39	221285.017674	521085.790426			
49	221289.916583	521317.749808			
51	216008.635501	522432.700610			
53	217333.909140	522427.794365			
55	218659.182779	522422.888120			
57	219986.116019	522417.975731			
58	220889.841081	522414.630085			
71	216036.438902	523749.714001			
73	217359.177319	523747.370602			
75	218681.915736	523745.027202			
78	220085.873104	523742.550528			
91	216064.242303	525066.727392			
93	217384.445497	525066.946838			
95	218704.648692	525067.166284			
96	219443.848682	525067.289154			
100	219806.805925	524436.349659			
101	220030.806142	523948.239169			
102	220138.611938	523545.558019			
103	220349.404956	523087.983757			
104	220562.594501	522855.061568			
105	220784.354650	522635.106734			
106	220944.111174	522301.200442			
107	221074.200597	521807.494150			
108	221208.147042	521418.095027			

START					11	215952.838	519791.841
11	INV N	0-12-47.7 E	2661.295		15	218614.115	519801.746
15	INV N	0-56-13.5 W	2643.225		19	221256.986	519758.518
19	INV N	88-47-24.4 E	1559.580		49	221289.917	521317.750
49	INV S	63-47-12.8 E	4179.355		96	219443.849	525067.289
96	INV S	0-00-34.3 W	739.200		95	218704.649	525067.166
95	INV S	0-00-34.3 W	2640.406		91	216064.242	525066.727
91	INV S	88-47-26.2 W	2634.614		51	216008.636	522432.701
51	INV S	88-47-22.6 W	2641.449		11	215952.838	519791.841
START					51	216008.636	522432.701
51	NV N	2-43.6 W	2650.565		55	218659.183	522422.888
55	NV N	2-43.6 W	2230.674		58	220889.841	522414.630
START					15	218614.115	519801.746
15	INV N	89-00-53.8 E	2621.529		55	218659.183	522422.888
55	INV N	89-00-53.8 E	2644.669		95	218704.649	525067.166

POINT-POINT ANGLES

ANGLE	51 -	11 -	15:	C.W.	271-25-25.1	C.C.W.	88-34-34.9	2661.295
ANGLE	11 -	15 -	19:	C.W.	178-50-58.8	C.C.W.	181-09-01.2	2643.225
ANGLE	15 -	19 -	49:	C.W.	269-43-37.9	C.C.W.	90-16-22.1	1559.580
ANGLE	19 -	49 -	96:	C.W.	207-25-22.8	C.C.W.	152-34-37.2	4179.355
ANGLE	49 -	96 -	95:	C.W.	243-47-47.1	C.C.W.	116-12-12.9	739.200
ANGLE	96 -	95 -	91:	C.W.	180-00-00.0	C.C.W.	180-00-00.0	2640.406
ANGLE	95 -	91 -	51:	C.W.	268-46-51.9	C.C.W.	91-13-08.1	2634.614
ANGLE	91 -	51 -	11:	C.W.	179-59-56.4	C.C.W.	180-00-03.6	2641.449