

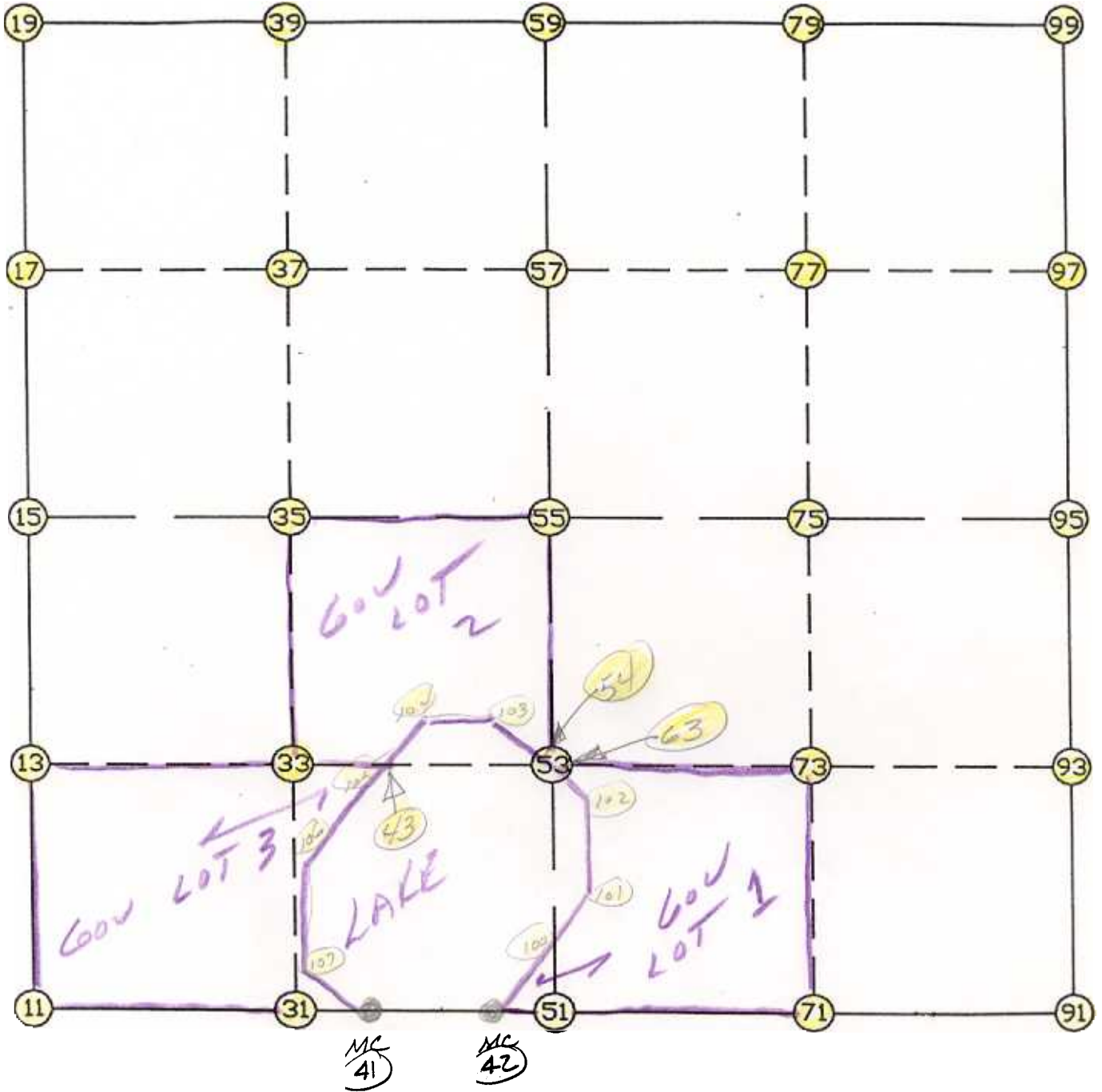
WRIGHT COUNTY SURVEYORS OFFICE

Public Works Building
Buffalo, Minn. 55313

SECTION 9

TOWNSHIP _____

RANGE 25



REMARKS

THE INFORMATION SHOWN HEREON IS A COMPILATION OF WRIGHT COUNTY RECORDS AND IS INTENDED TO BE USED FOR COMPARISON PURPOSES ONLY. THE COUNTY IS NOT RESPONSIBLE FOR ANY INACCURACIES HEREIN CONTAINED.

COGO =====

Thursday September 7 1995

10:40 AM

Coordinate File Name: SEC-09.CRD Lowest pt R: 1 Highest pt R: 10
 Job R : 95-75
 Description: COUNTY COORDINATES SECTION 9 T121 R25
 R of chars. in point descr.: 10

FROM	TYPE	BEARING	DISTANCE	TO	NORTHING	EASTING
------	------	---------	----------	----	----------	---------

LIST POINTS

POINT	NORTHING	EASTING	ELEVATION	DESCR
11	216325.745827	509147.490970		
13	217635.339772	509159.884460		
15	218944.933717	509172.277950		
17	220254.537321	509181.872022		
19	221564.140925	509191.466093		
31	216258.271327	510468.383262		
33	217573.873874	510480.656117		
35	218889.476421	510492.928971		
37	220204.371693	510503.795569		
39	221519.266966	510514.662166		
41	216241.402711	510798.606145		
42	216209.352319	511426.030071		
43	217528.583075	511453.859221		
51	216190.796826	511789.275555		
52	217537.029133	511801.654165		
53	217512.407976	511801.427774		
54	217537.029133	511801.654165		
55	218834.019125	511813.579992		
57	220154.206066	511825.719116		
59	221474.393007	511837.858239		
63	217510.824089	511838.349457		
71	216131.032661	513154.480304		
73	217454.748084	513145.526362		
75	218778.463508	513136.572421		
77	220097.462357	513147.484793		
79	221416.461206	513158.397166		
91	216071.268495	514519.685054		
93	217397.088193	514489.624951		
95	218722.907891	514459.564849		
97	220040.718648	514469.250471		
99	221358.529405	514478.936093		
100	216632.945347	511758.269463		
101	216996.051630	511972.930231		
102	217414.212882	511973.635490		
103	217583.433710	511736.673181		
104	217578.769102	511603.449138		
105	217436.999639	511180.875693		
106	216986.715219	510682.881929		
107	216459.815225	510642.552032		

START					11	216325.746	509147.491
11	INV N	0-32-32.0	E	2619.305	15	218944.934	509172.278
15	INV N	0-25-11.1	E	2619.277	19	221564.141	509191.466
19	INV S	88-03-27.6	E	2647.914	59	221474.393	511837.858
59	INV S	87-29-17.0	E	2643.618	99	221358.529	514478.936
99	INV S	0-25-16.0	W	2635.693	95	218722.908	514459.565
95	INV S	1-17-55.8	E	2652.321	91	216071.268	514519.685
91	INV N	87-29-36.2	W	2733.025	51	216190.797	511789.276
51	INV N	87-04-32.6	W	363.719	42	216209.352	511426.030
42	INV N	87-04-32.6	W	628.242	41	216241.403	510798.606
41	INV N	87-04-32.6	W	1653.268	11	216325.746	509147.491
START					51	216190.797	511789.276
51	INV N	0-31-36.6	E	2643.334	55	218834.019	511813.580
55	INV N	0-31-36.6	E	2640.485	59	221474.393	511837.858
START					15	218944.934	509172.278
15	INV S	87-35-43.5	E	2643.630	55	218834.019	511813.580
55	INV S	87-35-43.5	E	2648.317	95	218722.908	514459.565

POINT-POINT ANGLES

ANGLE	41 -	11 -	15:	C.W.	267-37-04.6	C.C.W.	92-22-55.4	2619.305
ANGLE	11 -	15 -	19:	C.W.	179-52-39.1	C.C.W.	180-07-20.9	2619.277
ANGLE	15 -	19 -	59:	C.W.	271-31-21.4	C.C.W.	88-28-38.6	2647.914
ANGLE	19 -	59 -	99:	C.W.	180-34-10.6	C.C.W.	179-25-49.4	2643.618
ANGLE	59 -	99 -	95:	C.W.	267-54-33.0	C.C.W.	92-05-27.0	2635.693
ANGLE	99 -	95 -	91:	C.W.	178-16-48.2	C.C.W.	181-43-11.8	2652.321
ANGLE	95 -	91 -	51:	C.W.	273-48-19.6	C.C.W.	86-11-40.4	2733.025
ANGLE	91 -	51 -	42:	C.W.	180-25-03.5	C.C.W.	179-34-56.5	363.719
ANGLE	51 -	42 -	41:	C.W.	180-00-00.0	C.C.W.	180-00-00.0	628.242
ANGLE	42 -	41 -	11:	C.W.	180-00-00.0	C.C.W.	180-00-00.0	1653.268

Coordinates stored Thursday September 7, 1995 10:41 AM