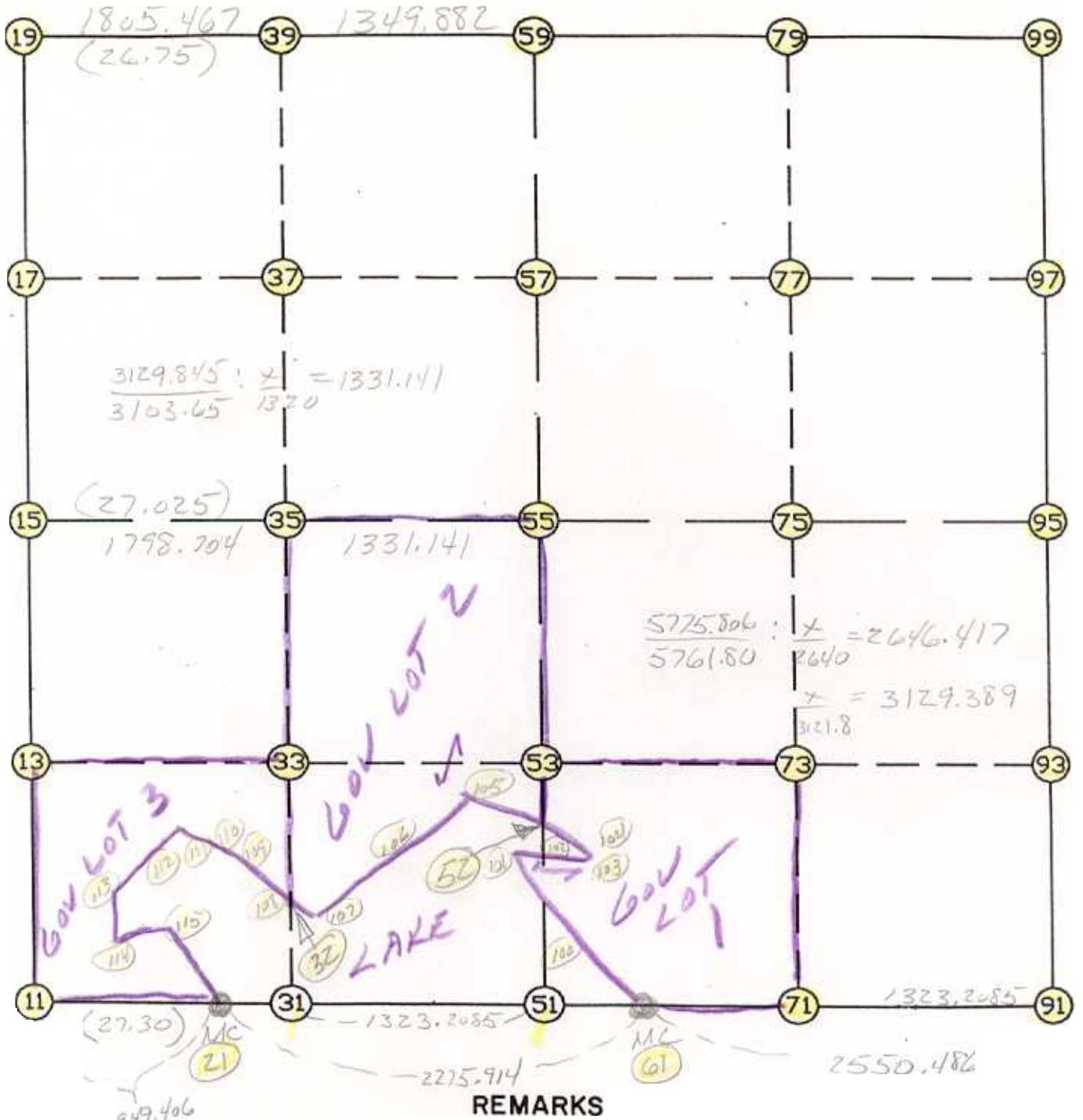


WRIGHT COUNTY SURVEYORS OFFICE

Public Works Building
Buffalo, Minn. 55313

SECTION 7 TOWNSHIP 121 RANGE 25



1/4 SRT ON LINE BETWEEN MIL.S. &
IN PROPORTION TO GOV CHAINAGE

THE INFORMATION SHOWN HEREON IS A COMPILATION OF WRIGHT COUNTY RECORDS AND IS INTENDED TO BE USED FOR COMPARISON PURPOSES ONLY. THE COUNTY IS NOT RESPONSIBLE FOR ANY INACCURACIES HEREIN CONTAINED.

COGO

Thursday September

995

10:00 AM

Coordinate File Name: SEC-07.CRD Lowest pt R: Highest pt R: 15
 Job R : 95-75
 Description: COUNTY COORDINATES SECTION 7 T121 R25
 R of chars. in point descr.: 10

 FROM TYPE BEARING DISTANCE TO NORTHING EASTING

IST POINTS				
POINT	NORTHING	EASTING	ELEVATION	DESCR

11	216481.834983	498072.477375		
13	217804.753052	498085.170232		
15	219127.671120	498097.863090		
17	220445.547773	498098.014529		
19	221763.424425	498098.165969		
21	216415.121656	499019.536183		
31	216354.917381	499874.192833		
32	216823.616776	499877.510928		
33	217684.881636	499883.608138		
35	219014.816652	499893.023236		
37	220340.148946	499896.997957		
39	221665.447813	499900.972579		
51	216261.937480	501194.130511		
52	216955.185144	501201.249296		
53	217596.617777	501207.836006		
55	218931.298074	501221.541502		
57	220261.746168	501235.203538		
59	221592.194261	501248.865575		
61	216255.196550	501289.824380		
71	216168.957579	502514.068188		
73	217509.021040	502521.684722		
75	218849.084500	502529.301256		
77	220179.938028	502546.278344		
79	221510.791556	502563.255432		
91	216075.977677	503834.005866		
93	217421.424302	503835.533438		
95	218766.870927	503837.061010		
97	220098.129889	503857.353150		
99	221429.388851	503877.645290		
100	216471.969589	501202.603510		
101	216776.091022	501058.429038		
102	216795.822617	501112.498280		
103	216763.816153	501242.003596		
104	216908.871413	501272.768893		
105	217209.526461	500808.484820		
106	217072.186084	500563.551566		
107	216789.188179	499982.772665		
108	216829.262593	499860.249447		
109	217019.564181	499653.950484		
110	217083.965394	499432.307411		
111	217173.479675	499189.298523		
112	217153.033916	498988.661358		
113	216947.422031	498655.772865		
114	216503.453305	498655.832354		
115	216540.029398	498987.159666		

					11	216481.835	498072.477
	INV N	0-32-59.0	E	2645.958	15	219127.671	498097.863
15	INV N	0-00-23.7	E	2635.753	19	221763.424	498098.166
19	INV S	86-53-21.2	E	3155.349	59	221592.194	501248.866
59	INV S	86-27-21.9	E	2633.816	99	221429.389	503877.645
99	INV S	0-52-23.8	W	2662.827	95	218766.871	503837.061
95	INV S	0-03-54.2	W	2690.895	91	216075.978	503834.006
91	INV N	85-58-14.1	W	2550.486	61	216255.197	501289.824
61	INV N	85-58-14.1	W	95.931	51	216261.937	501194.131
51	INV N	85-58-14.1	W	2179.983	21	216415.122	499019.536
21	INV N	85-58-14.1	W	949.406	11	216481.835	498072.477
START					51	216261.937	501194.131
51	INV N	0-35-18.0	E	2669.501	55	218931.298	501221.542
55	INV N	0-35-18.0	E	2661.036	59	221592.194	501248.866
START					15	219127.671	498097.863
15	INV S	86-24-10.0	E	3129.845	55	218931.298	501221.542
55	INV S	86-24-10.0	E	2620.683	95	218766.871	503837.061

POINT-POINT ANGLES

ANGLE	21 -	11 -	15:	C.W.	266-31-13.1	C.C.W.	93-28-46.9	2645.958
ANGLE	11 -	15 -	19:	C.W.	179-27-24.7	C.C.W.	180-32-35.3	2635.753
ANGLE	15 -	19 -	59:	C.W.	273-06-15.1	C.C.W.	86-53-44.9	3155.349
ANGLE	19 -	59 -	99:	C.W.	180-25-59.3	C.C.W.	179-34-00.7	2633.816
ANGLE	59 -	99 -	95:	C.W.	267-19-45.7	C.C.W.	92-40-14.3	2662.827
ANGLE	99 -	95 -	91:	C.W.	179-11-30.4	C.C.W.	180-48-29.6	2690.895
ANGLE	95 -	91 -	61:	C.W.	273-57-51.7	C.C.W.	86-02-08.3	2550.486
ANGLE	91 -	61 -	51:	C.W.	180-00-00.0	C.C.W.	180-00-00.0	95.931
ANGLE	61 -	51 -	21:	C.W.	180-00-00.0	C.C.W.	180-00-00.0	2179.983
ANGLE	51 -	21 -	11:	C.W.	180-00-00.0	C.C.W.	180-00-00.0	949.406

Coordinates stored Thursday September 1995 10:02 AM