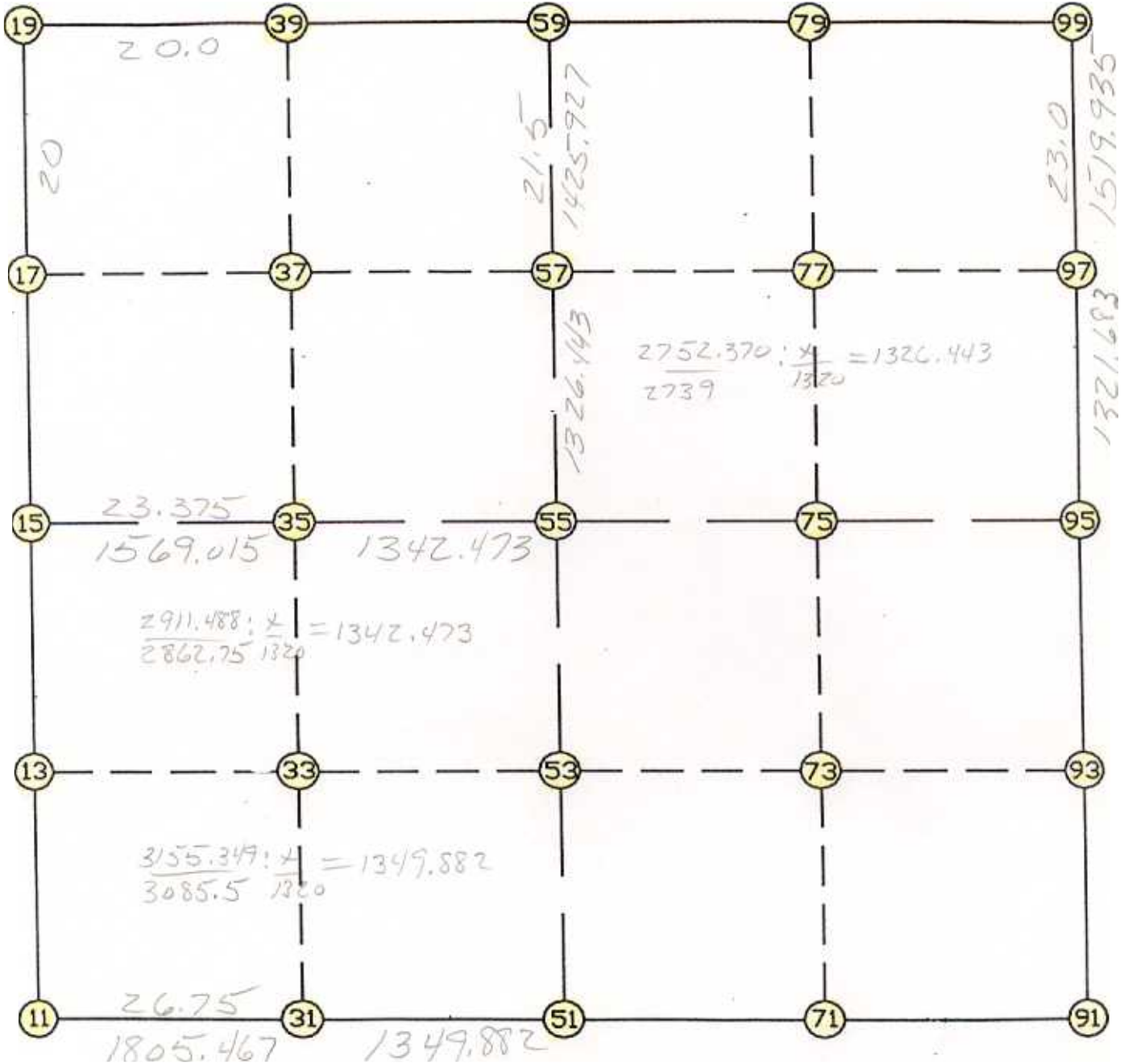


WRIGHT COUNTY SURVEYORS OFFICE

Public Works Building  
Buffalo, Minn. 55313

SECTION 6 TOWNSHIP 121 RANGE 25



REMARKS

---



---



---

THE INFORMATION SHOWN HEREON IS A COMPILATION OF WRIGHT COUNTY RECORDS AND IS INTENDED TO BE USED FOR COMPARISON PURPOSES ONLY. THE COUNTY IS NOT RESPONSIBLE FOR ANY INACCURACIES HEREIN CONTAINED.

Coordinate File Name: SEC-06.CRD    Lowe    R    Highest pt R:    99  
 Job R            : 95-75  
 Description: COUNTY COORDINATES SECT ON 6    21 R25  
 R of chars. in point descr.: 10

-----  
 FROM TYPE            BEARING    DISTANCE    TO            NORTHING            EASTING  
 -----

LIST POINTS

POINT	NORTHING	EASTING	ELEVATION	DESCR
11	221763.424425	498098.165969		
13	223083.034117	498096.241881		
15	224402.643809	498094.317793		
17	225720.595664	498088.232891		
19	227038.547520	498082.147990		
31	221665.447809	499900.972652		
33	222990.102293	499780.927335		
35	224314.842789	499660.874224		
37	225637.251466	499539.487847		
39	227009.338063	499413.541440		
51	221592.194261	501248.865575		
53	222915.956574	501125.054777		
55	224239.718887	501001.243979		
57	225560.397971	500877.721555		
59	226980.128605	500744.934890		
71	221510.791556	502563.255432		
73	222837.680405	502452.664127		
75	224164.569254	502342.072821		
77	225482.706353	502216.902537		
79	226949.034401	502077.660042		
91	221429.388851	503877.645290		
93	222759.404237	503780.273476		
95	224089.419622	503682.901663		
97	225405.010890	503556.149787		
99	226917.940197	503410.385193		

START	POINT	BEARING	DISTANCE	POINT	NORTHING	EASTING
START	11	INV N	0-05-00.7 W	2639.222	11	221763.424
11	15	INV N	0-15-52.3 W	2635.932	15	224402.644
15	19	INV N	0-15-52.3 W	2635.932	19	227038.548
19	59	INV S	88-44-35.5 E	2663.428	59	226980.129
59	99	INV S	88-39-48.4 E	2666.176	99	226917.940
99	95	INV S	5-30-11.6 E	2841.618	95	224089.420
95	91	INV S	4-11-14.0 E	2667.150	91	221429.389
91	51	INV N	86-27-21.9 W	2633.816	51	221592.194
51	11	INV N	86-53-21.2 W	3155.349	11	221763.424

START	POINT	BEARING	DISTANCE	POINT	NORTHING	EASTING
START	51	INV N	5-20-35.9 W	2659.079	51	221592.194
51	55	INV N	5-20-35.9 W	2752.370	55	224239.719
55	59	INV N	5-20-35.9 W	2752.370	59	226980.129

START	POINT	BEARING	DISTANCE	POINT	NORTHING	EASTING
START	15	INV S	86-47-31.5 E	2911.488	15	224402.644
15	55	INV S	86-47-31.5 E	2685.866	55	224239.719
55	95	INV S	86-47-31.5 E	2685.866	95	224089.420

POINT-POINT ANGLES

ANGLE	POINT	BEARING	DISTANCE	POINT	NORTHING	EASTING
ANGLE	51 - 11	- 15:	C.W. 266-48-20.5	C.C.W. 93-11-39.5	2639.222	
ANGLE	11 - 15	- 19:	C.W. 179-49-08.4	C.C.W. 180-10-51.6	2635.932	
ANGLE	15 - 19	- 59:	C.W. 271-31-16.8	C.C.W. 88-28-43.2	2663.428	
ANGLE	19 - 59	- 99:	C.W. 180-04-47.0	C.C.W. 179-55-13.0	2666.176	
ANGLE	59 - 99	- 95:	C.W. 263-09-36.8	C.C.W. 96-50-23.2	2841.618	
ANGLE	99 - 95	- 91:	C.W. 181-18-57.7	C.C.W. 178-41-02.3	2667.150	
ANGLE	95 - 91	- 51:	C.W. 277-43-52.1	C.C.W. 82-16-07.9	2633.816	
ANGLE	91 - 51	- 11:	C.W. 179-34-00.7	C.C.W. 180-25-59.3	3155.349	