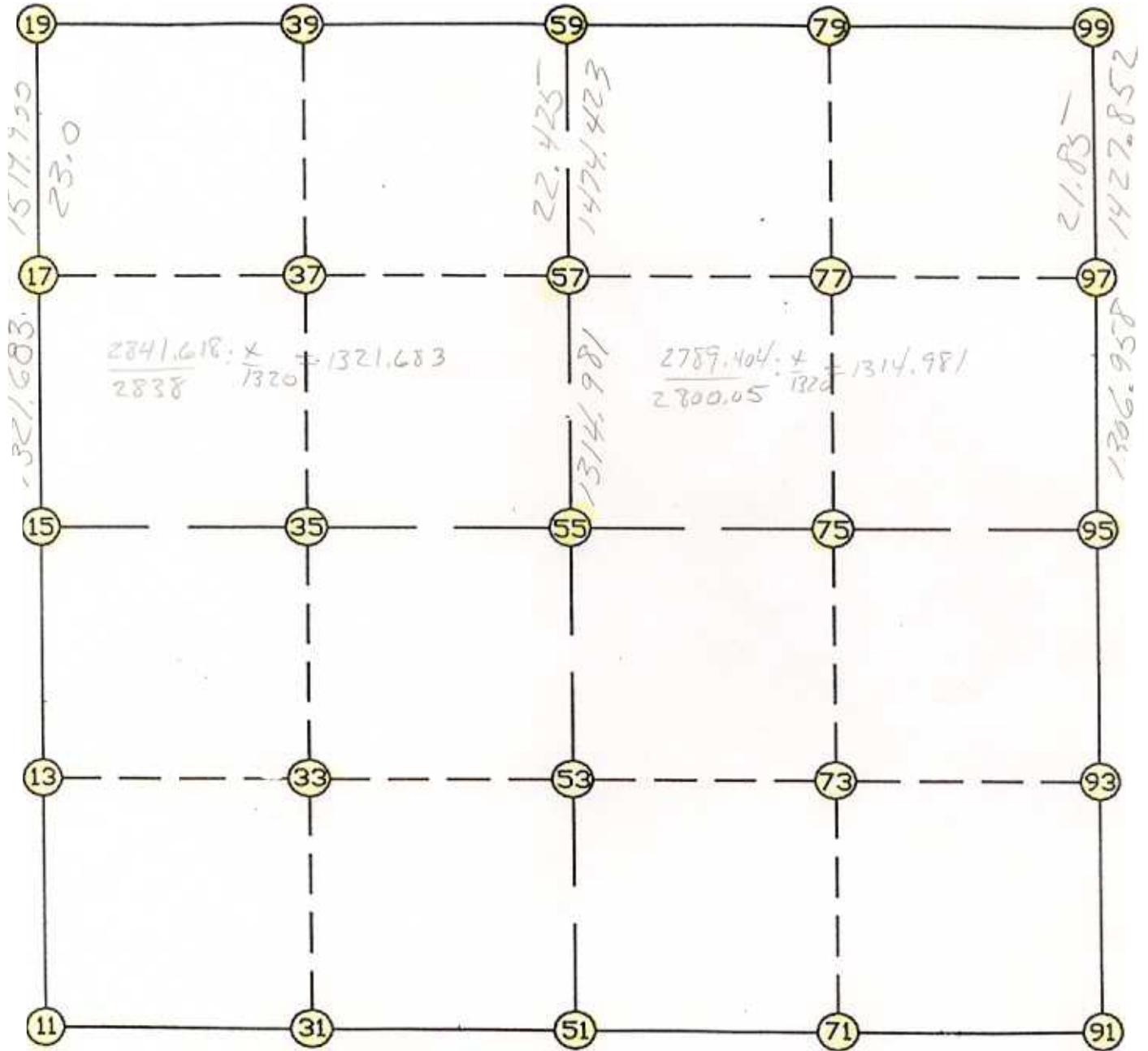


WRIGHT COUNTY SURVEYORS OFFICE

Public Works Building

Buffalo, Minn. 55313

SECTION 5 TOWNSHIP 121 RANGE 25



REMARKS

---

---

---

THE INFORMATION SHOWN HEREON IS A COMPILATION OF WRIGHT COUNTY RECORDS AND IS INTENDED TO BE USED FOR COMPARISON PURPOSES ONLY. THE COUNTY IS NOT RESPONSIBLE FOR ANY INACCURACIES HEREIN CONTAINED.

Coordinate File Name: SEC-05.CRD    Lowest pt R: 1    Highest pt R: 99  
 Job R : 95-75  
 Description: COUNTY COORDINATES SECTION 5 T121 R25  
 R of chars. in point descr.: 10

FROM	TYPE	BEARING	DISTANCE	TO	NORTHING	EASTING
LIST POINTS						
POINT					NORTHING	EASTING
11					221429.388851	503877.645290
13					222759.404237	503780.273476
15					224089.419622	503682.901663
17					225405.010713	503556.149804
19					226917.940197	503410.385193
31					221460.142044	505224.582280
33					222784.208569	505110.447421
35					224108.275094	504996.312562
37					225420.343050	504867.976078
39					226910.410620	504722.229029
51					221490.895237	506571.519269
53					222809.012901	506440.621365
55					224127.130565	506309.723461
57					225435.675081	506179.776234
59					226902.881044	506034.072864
71					221527.518081	507881.492681
73					222836.711179	507749.465972
75					224145.904278	507617.439262
77					225450.866931	507492.134779
79					226895.350170	507353.433319
91					221564.140925	509191.466093
93					222864.409457	509058.310578
95					224164.677990	508925.155063
97					225466.059465	508804.552322
99					226887.819296	508672.793773

START					11	221429.389	503877.645
11	INV N	4-11-14.0	W	2667.150	15	224089.420	503682.902
15	INV N	5-30-11.6	W	2841.618	19	226917.940	503410.385
19	INV S	89-40-16.1	E	2623.731	59	226902.881	506034.073
59	INV S	89-40-22.7	E	2638.764	99	226887.819	508672.794
99	INV S	5-17-40.7	E	2734.810	95	224164.678	508925.155
95	INV S	5-50-49.4	E	2614.137	91	221564.141	509191.466
91	INV S	88-23-55.0	W	2620.970	51	221490.895	506571.519
51	INV S	88-41-31.4	W	2694.576	11	221429.389	503877.645
START					51	221490.895	506571.519
51	INV N	5-40-16.5	W	2649.202	55	224127.131	506309.723
55	INV N	5-40-16.5	W	2789.404	59	226902.881	506034.073
START					15	224089.420	503682.902
15	INV N	89-10-39.0	E	2627.092	55	224127.131	506309.723
55	INV N	89-10-39.0	E	2615.701	95	224164.678	508925.155

POINT-POINT ANGLES

ANGLE	51 - 11 - 15:	C.W. 267-07-14.6	C.C.W. 92-52-45.4	2667.150
ANGLE	11 - 15 - 19:	C.W. 178-41-02.3	C.C.W. 181-18-57.7	2841.618
ANGLE	15 - 19 - 59:	C.W. 275-49-55.5	C.C.W. 84-10-04.5	2623.731
ANGLE	19 - 59 - 99:	C.W. 179-59-53.5	C.C.W. 180-00-06.5	2638.764
ANGLE	59 - 99 - 95:	C.W. 264-22-42.0	C.C.W. 95-37-18.0	2734.810
ANGLE	99 - 95 - 91:	C.W. 179-26-51.3	C.C.W. 180-33-08.7	2614.137
ANGLE	95 - 91 - 51:	C.W. 274-14-44.4	C.C.W. 85-45-15.6	2620.970
ANGLE	91 - 51 - 11:	C.W. 180-17-36.4	C.C.W. 179-42-23.6	2694.576

Coordinates stored                      Thursday September 7, 1995                      7:51 AM