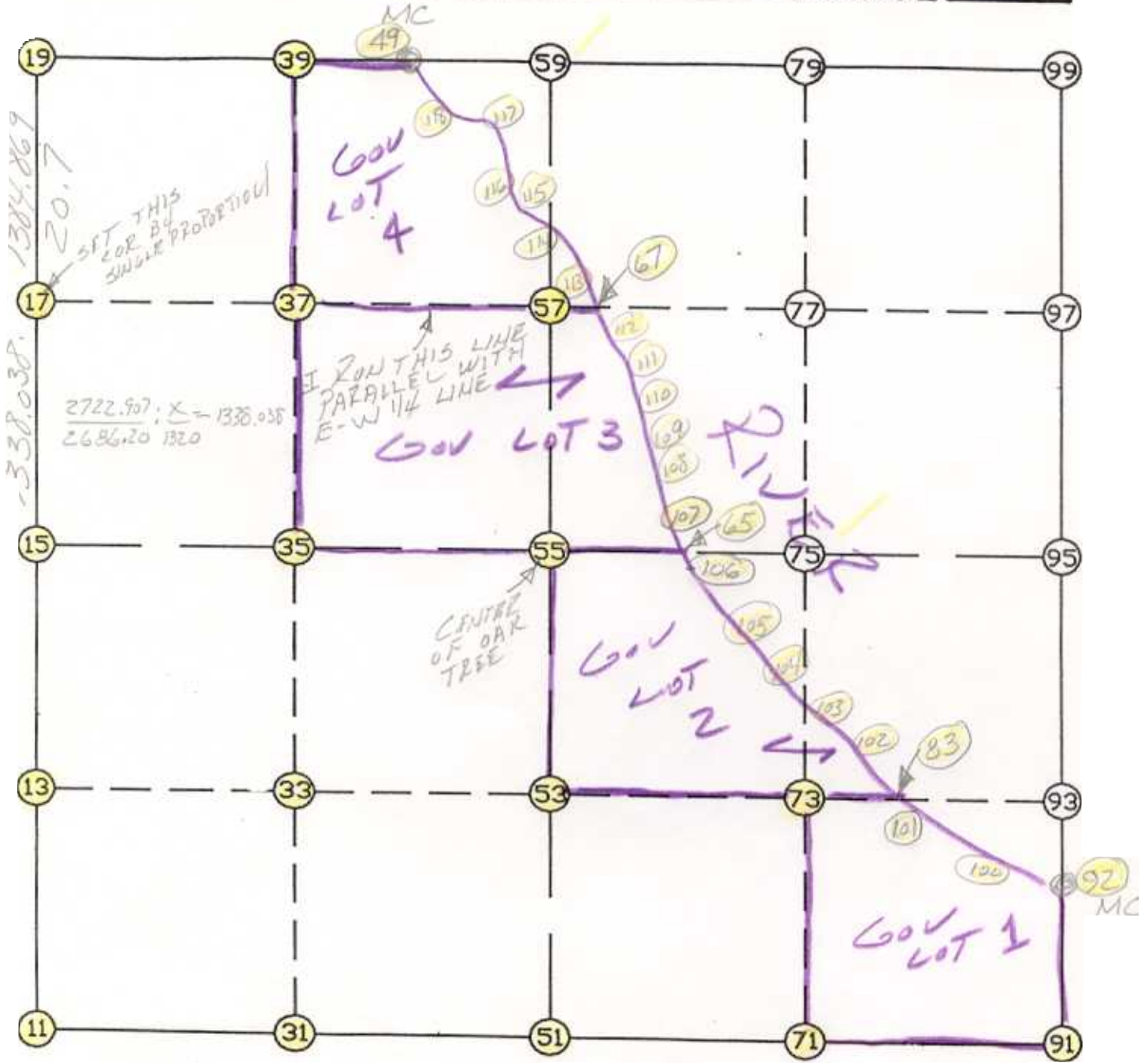


WRIGHT COUNTY SURVEYORS OFFICE

Public Works Building  
Buffalo, Minn. 55313

SECTION 3 TOWNSHIP 121 RANGE           



REMARKS

SECTION 3 SUBDIVIDED USING CENTER SECTION (CENTRE OF OAK TREE) BEING USE BY LOCAL SURVEYORS AS CENTER SECTION

THE INFORMATION SHOWN HEREON IS A COMPILATION OF WRIGHT COUNTY RECORDS AND IS INTENDED TO BE USED FOR COMPARISON PURPOSES ONLY. THE COUNTY IS NOT RESPONSIBLE FOR ANY INACCURACIES HEREIN CONTAINED.

Coordinate File Name: SEC-03.CRD    Lowest pt R                    Highest pt R    118  
 Job R                    : 95-75  
 Description: COUNTY COORDINATES SECTION 3 T12  
 R of chars. in point descr.: 10

-----  
 FROM TYPE                    BEARING    DISTANCE    TO            NORTHING            EASTING  
 -----

LIST POINTS

POINT	NORTHING	EASTING	ELEVATION	DESCR
11	221358.529405	514478.936093		
13	222676.059672	514339.396695		
15	223993.589938	514199.857298		
17	225325.193852	514068.797369		
19	226703.403471	513933.150384		
31	221339.448256	515803.343582		
33	222660.947863	515668.662866		
35	223982.447469	515533.982149		
37	225314.048510	515403.236481		
39	226654.302476	515271.641210		
49	226636.553123	515755.487746		
51	221320.367107	517127.751072		
53	222645.836054	516997.929036		
55	223971.305000	516868.107000		
57	225302.903093	516737.684649		
59	226605.201481	516610.132036		
65	223966.524074	517440.543208		
67	225301.970396	516849.357059		
71	221288.676599	518443.134291		
73	222624.000241	518372.890126		
75	223959.323883	518302.645961		
83	222612.646060	519087.842065		
91	221256.986090	519758.517510		
92	222106.942813	519751.777966		
93	222602.164428	519747.851216		
95	223947.342766	519737.184921		
100	222284.073658	519591.494450		
101	222601.854323	519096.054957		
102	222906.594446	518864.136991		
103	223078.256306	518458.899387		
104	223313.034739	518302.385461		
105	223645.918627	517941.899904		
106	223859.358834	517642.995454		
107	224011.058132	517356.411262		
108	224257.082519	517168.748063		
109	224506.455686	517029.264047		
110	224824.794649	517019.659405		
111	225036.032057	516981.518974		
112	225156.688834	516955.393692		
113	225309.269348	516844.029774		
114	225544.125489	516688.961094		
115	225776.223922	516457.816696		
116	226128.085510	516306.272213		
117	226280.816072	516177.322801		
118	226519.509038	515858.719806		

2

START					11	221358.529	514478.936
11	INV N	6-02-44.3	W	2649.798	15	223993.590	514199.857
15	INV N	5-37-15.9	W	2722.907	19	226703.403	513933.150
19	INV S	87-53-56.8	E	1823.563	49	226636.553	515755.488
49	INV S	41-25-14.3	E	6040.505	92	222106.943	519751.778
92	INV S	0-27-15.5	E	849.983	91	221256.986	519758.518
91	INV N	88-37-11.6	W	2631.530	51	221320.367	517127.751
51	INV N	89-10-28.5	W	2649.090	11	221358.529	514478.936

START					51	221320.367	517127.751
51	INV N	5-35-38.2	W	2663.623	55	223971.305	516868.107

START					15	223993.590	514199.857
15	INV S	89-31-17.3	E	2668.343	55	223971.305	516868.107

POINT-POINT ANGLES

ANGLE	51 -	11 -	15:	C.W.	263-07-44.1	C.C.W.	96-52-15.9	2649.798
ANGLE	11 -	15 -	19:	C.W.	180-25-28.4	C.C.W.	179-34-31.6	2722.907
ANGLE	15 -	19 -	49:	C.W.	277-43-19.1	C.C.W.	82-16-40.9	1823.563
ANGLE	19 -	49 -	92:	C.W.	226-28-42.5	C.C.W.	133-31-17.5	6040.505
ANGLE	49 -	92 -	91:	C.W.	220-57-58.8	C.C.W.	139-02-01.2	849.983
ANGLE	92 -	91 -	51:	C.W.	271-50-03.9	C.C.W.	88-09-56.1	2631.530
ANGLE	91 -	51 -	11:	C.W.	179-26-43.1	C.C.W.	180-33-16.9	2649.090

Coordinates stored

Wednesday September 6, 1995

3:04 PM