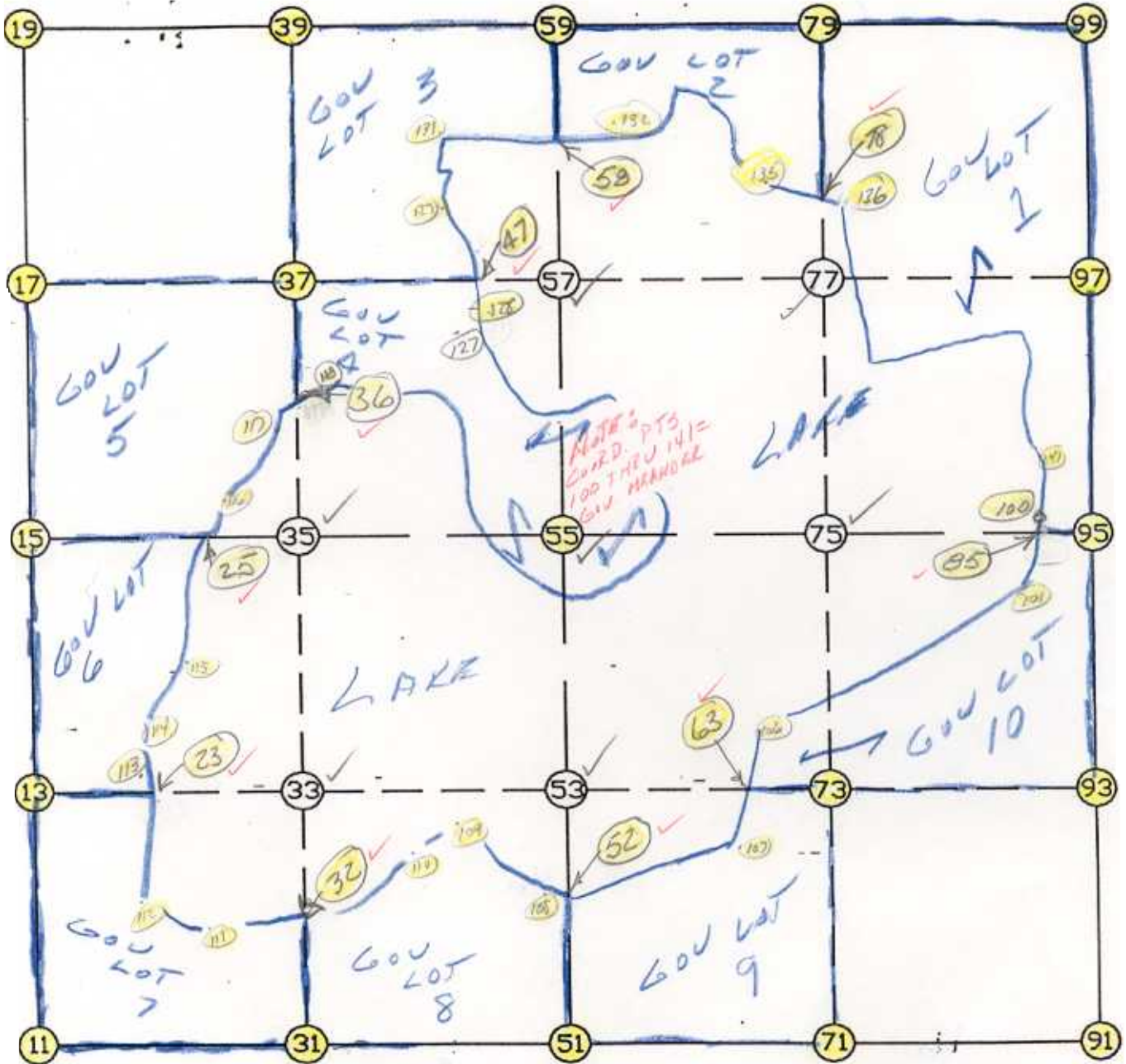


WRIGHT COUNTY SURVEYORS OFFICE

Public Works Building
Buffalo, Minn. 55313

SECTION 36 TOWNSHIP 121 RANGE 24



REMARKS

THE INFORMATION SHOWN HEREON IS A COMPILATION OF WRIGHT COUNTY RECORDS AND IS INTENDED TO BE USED FOR COMPARISON PURPOSES ONLY. THE COUNTY IS NOT RESPONSIBLE FOR ANY INACCURACIES HEREIN CONTAINED.

Coordinate File Name: SEC-36.CRD Lowest pt #: 1 Highest pt #: 141
 Job # : 95-08
 Description: COUNTY COORDINATES SECTION 36 T121 R24
 # of chars. in point descr.: 10

FROM TYPE	BEARING	DISTANCE	TO	NORTHING	EASTING

LIST POINTS					
POINT	NORTHING	EASTING	ELEVATION	DESCR	

11	195049.804145	556686.422262			
13	196377.778703	556683.443277			
15	197705.753261	556680.464292			
17	199036.288784	556675.257331			
19	200366.824308	556670.050370			
23	196378.148231	557104.113750			
25	197706.973259	557534.406443			
31	195050.241969	558011.115647			
32	195877.643644	558007.519975			
33	196378.939893	558005.341472			
35	197707.637818	557999.567296			
36	198309.306671	557996.451472			
37	199037.071798	557992.682642			
39	200366.505778	557985.797988			
47	199037.645859	558958.544448			
51	195050.679792	559335.809032			
52	195681.803688	559331.740847			
53	196380.101084	559327.239666			
55	197709.522375	559318.670300			
57	199037.854811	559310.107954			
58	199497.755500	559307.143463			
59	200366.187247	559301.545607			
63	196382.871961	560182.371748			
71	195057.337686	560657.030741			
73	196384.367195	560643.822278			
75	197711.396704	560630.613816			
77	199038.157384	560618.180989			
78	199665.772737	560612.299723			
79	200364.918064	560605.748162			
85	197712.964350	561727.893967			
91	195063.995580	561978.252450			
93	196388.633306	561960.404891			
95	197713.271032	561942.557331			
97	199038.459957	561926.254024			
99	200363.648881	561909.950717			
100	197713.271000	561728.057000			
101	197479.815235	561603.938260			
102	197559.586119	561283.868558			
103	197456.204443	560631.953784			
104	197199.612927	560567.984450			
105	196924.096670	560385.646945			
106	196399.882556	560184.459987			
107	195940.821151	560128.105120			
108	195614.144027	559123.717279			
109	196195.312941	558562.313861			
110	195936.772299	558179.107417			
111	195657.182313	557367.755795			
112	195814.961109	557004.786227			
113	196399.404876	557107.862717			
114	196823.729557	557048.222880			
115	197150.135666	557374.694464			
116	197847.464830	557574.702191			
117	198305.451932	557952.327757			
118	198342.786396	558379.680971			
119	198265.265081	558868.681855			
120	197296.250511	559074.605440			
121	197010.083806	559239.806997			
122	197145.432283	559611.802170			
POINT	NORTHING	EASTING	ELEVATION	DESCR	

2

123	198116.502586	560172.680673
124	198276.380124	560056.515102
125	198383.731340	559744.653635
126	198233.215303	559307.707963
127	198722.292094	559110.079237
128	198948.227805	558974.312152
129	199207.762089	558928.546677
130	199283.318426	558820.634043
131	199480.869860	558820.634608
132	199506.052841	559546.206378
133	199868.563632	559546.208283
134	199997.401776	559920.516907
135	199757.742820	560032.263184
136	199664.703100	560619.045703
137	198892.985576	560995.342961
138	199063.654704	561632.770804
139	198855.758329	561889.463591
140	198526.368399	561735.886484
141	198197.697838	561770.429376

START				11	195049.804	556686.422
11	INV N	0-07-42.7 W	2655.956	15	197705.753	556680.464
15	INV N	0-13-27.2 W	2661.091	19	200366.824	556670.050
19	INV S	89-59-10.1 E	2631.495	59	200366.187	559301.546
59	INV S	89-56-39.3 E	2608.406	99	200363.649	561909.951
99	INV S	0-42-17.5 E	2650.578	95	197713.271	561942.557
95	INV S	0-46-18.9 E	2649.516	91	195063.996	561978.252
91	INV S	89-42-40.6 W	2642.477	51	195050.680	559335.809
51	INV S	89-58-51.8 W	2649.387	11	195049.804	556686.422
START				51	195050.680	559335.809
51	INV N	0-22-09.6 W	2658.898	55	197709.522	559318.670
55	INV N	0-22-09.6 W	2656.720	59	200366.187	559301.546
START				15	197705.753	556680.464
15	INV N	89-55-05.3 E	2638.209	55	197709.522	559318.670
55	INV N	89-55-05.3 E	2623.890	95	197713.271	561942.557

POINT-POINT ANGLES

ANGLE	51 -	11 -	15:	C.W.	269-53-25.5	C.C.W.	90-06-34.5	2655.956
ANGLE	11 -	15 -	19:	C.W.	179-54-15.5	C.C.W.	180-05-44.5	2661.091
ANGLE	15 -	19 -	59:	C.W.	270-14-17.1	C.C.W.	89-45-42.9	2631.495
ANGLE	19 -	59 -	99:	C.W.	180-02-30.8	C.C.W.	179-57-29.2	2608.406
ANGLE	59 -	99 -	95:	C.W.	269-14-21.8	C.C.W.	90-45-38.2	2650.578
ANGLE	99 -	95 -	91:	C.W.	179-55-58.5	C.C.W.	180-04-01.5	2649.516
ANGLE	95 -	91 -	51:	C.W.	270-28-59.5	C.C.W.	89-31-00.5	2642.477
ANGLE	91 -	51 -	11:	C.W.	180-16-11.2	C.C.W.	179-43-48.8	2649.387

Coordinates stored

Thursday April 6, 1995

3:06 PM