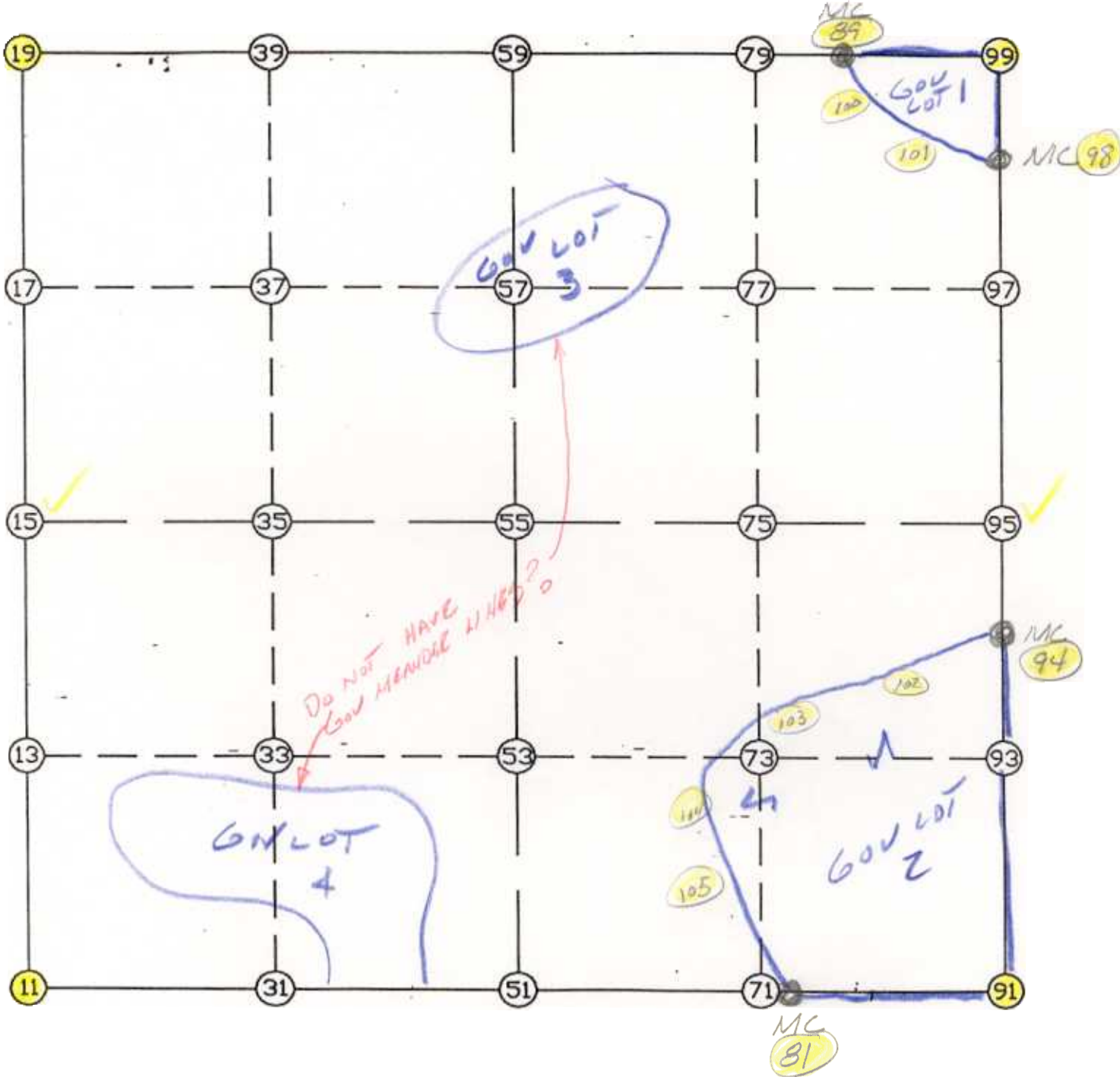


WRIGHT COUNTY SURVEYORS OFFICE

Public Works Building

Buffalo, Minn. 55313

SECTION 31 TOWNSHIP 121 RANGE 24



REMARKS

THE INFORMATION SHOWN HEREON IS A COMPILATION OF WRIGHT COUNTY RECORDS AND IS INTENDED TO BE USED FOR COMPARISON PURPOSES ONLY. THE COUNTY IS NOT RESPONSIBLE FOR ANY INACCURACIES HEREIN CONTAINED.

COGO =====

Thursday February 2, 1995

11:37 AM

Coordinate File Name: SEC-31.CRD Lowest pt #: 1 Highest pt #: 105
 Job # : 95-09
 Description: COUNTY COORDINATES SECTION 31 T121 R24
 # of chars. in point descr.: 10

FROM TYPE	BEARING	DISTANCE	TO	NORTHING	EASTING

LIST POINTS					
POINT	NORTHING	EASTING	ELEVATION	DESCR	

11	195006.475152	530287.551505			
15	197650.880504	530286.666545			
19	200295.285855	530285.781585			
81	195016.714403	534242.251400			
89	200325.149719	534765.638404			
91	195020.082212	535560.440588			
94	197190.615715	535535.222069			
95	197686.320258	535529.462686			
98	199900.477817	535503.737318			
99	200330.089490	535498.745840			
100	200010.687087	534994.299212			
101	199909.645439	535232.862879			
102	196532.830560	534407.687201			
103	196234.649711	534066.064977			
104	195779.610734	533995.397632			
105	195318.779141	534045.245256			

START							
11	INV N	0-01-09.0	W	2644.405	15	197650.881	530286.667
15	INV N	0-01-09.0	W	2644.405	19	200295.286	530285.782
19	INV N	89-37-05.0	E	4479.956	89	200325.150	534765.638
89	INV N	89-36-50.2	E	733.124	99	200330.089	535498.746
99	INV S	0-39-56.4	E	429.641	98	199900.478	535503.737
98	INV S	0-39-56.4	E	2214.307	95	197686.320	535529.463
95	INV S	0-39-56.4	E	495.738	94	197190.616	535535.222
94	INV S	0-39-56.4	E	2170.680	91	195020.082	535560.441
91	INV S	89-51-13.0	W	1318.193	81	195016.714	534242.251
81	INV S	89-51-06.0	W	3954.713	11	195006.475	530287.552

POINT-POINT ANGLES										
ANGLE	81	-	11	-	15:	C.W.	270-07-45.0	C.C.W.	89-52-15.0	2644.405
ANGLE	11	-	15	-	19:	C.W.	180-00-00.0	C.C.W.	180-00-00.0	2644.405
ANGLE	15	-	19	-	89:	C.W.	269-38-14.0	C.C.W.	90-21-46.0	4479.956
ANGLE	19	-	89	-	99:	C.W.	179-59-45.2	C.C.W.	180-00-14.8	733.124
ANGLE	89	-	99	-	98:	C.W.	269-43-13.4	C.C.W.	90-16-46.6	429.641
ANGLE	99	-	98	-	95:	C.W.	180-00-00.0	C.C.W.	180-00-00.0	2214.307
ANGLE	98	-	95	-	94:	C.W.	180-00-00.0	C.C.W.	180-00-00.0	495.738
ANGLE	95	-	94	-	91:	C.W.	180-00-00.0	C.C.W.	180-00-00.0	2170.680
ANGLE	94	-	91	-	81:	C.W.	270-31-09.4	C.C.W.	89-28-50.6	1318.193
ANGLE	91	-	81	-	11:	C.W.	179-59-52.9	C.C.W.	180-00-07.1	3954.713

Coordinates stored Thursday February 2, 1995 11:38 AM