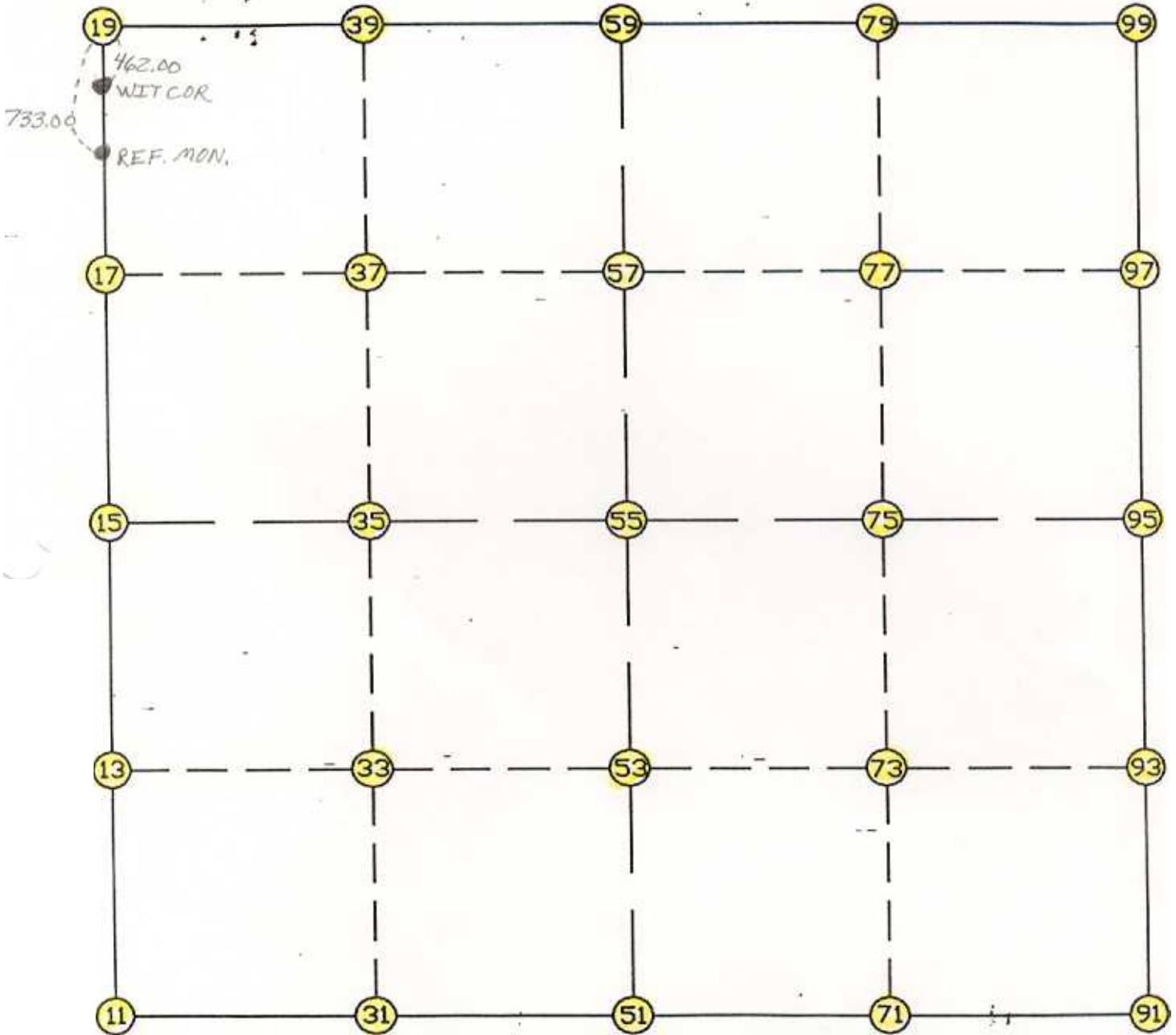


WRIGHT COUNTY SURVEYORS OFFICE

Public Works Building
Buffalo, Minn. 55313

SECTION 21 TOWNSHIP 121 RANGE 24



REMARKS

THE INFORMATION SHOWN HEREON IS A COMPILATION OF WRIGHT COUNTY RECORDS AND IS INTENDED TO BE USED FOR COMPARISON PURPOSES ONLY. THE COUNTY IS NOT RESPONSIBLE FOR ANY INACCURACIES HEREIN CONTAINED.

Coordinate File Name: SEC-21.CRD Lowest pt #: 1 Highest pt #: 99
 Job # : 95-09
 Description: COUNTY COORDINATES SECTION 21 T121 R24
 # of chars. in point descr.: 10

 FROM TYPE BEARING DISTANCE TO NORTHING EASTING

LIST POINTS

POINT	NORTHING	EASTING	ELEVATION	DESCR
11	205497.715570	540759.466537		
13	206813.122200	540766.802899		
15	208128.528830	540774.139260		
17	209445.590356	540770.395677		
19	210762.651883	540766.652094		
31	205491.092343	542089.109737		
33	206804.875520	542093.503585		
35	208118.658697	542097.897434		
37	209432.634453	542096.750608		
39	210746.610208	542095.603782		
51	205484.469117	543418.752936		
53	206796.628840	543420.204272		
55	208108.788563	543421.655608		
57	209419.678549	543423.105539		
59	210730.568534	543424.555470		
71	205480.202752	544721.533465		
73	206789.639200	544722.930812		
75	208099.075647	544724.328159		
77	209415.825815	544729.716620		
79	210732.575982	544735.105081		
91	205475.936386	546024.313995		
93	206782.649559	546025.657353		
95	208089.362732	546027.000711		
97	209411.973081	546036.327702		
99	210734.583431	546045.654692		

START			11	205497.716	540759.467	
11	INV N	0-19-10.4 E	2630.854	15	208128.529	540774.139
15	INV N	0-09-46.3 W	2634.134	19	210762.652	540766.652
19	INV S	89-18-30.3 E	2658.097	59	210730.569	543424.555
59	INV N	89-54-44.1 E	2621.102	99	210734.583	546045.655
99	INV S	0-24-14.5 W	2645.286	95	208089.363	546027.001 AS
95	INV S	0-03-32.0 W	2613.428	91	205475.936	546024.314
91	INV N	89-48-44.5 W	2605.575	51	205484.469	543418.753
START			51	205484.469	543418.753	
51	INV N	89-42-52.6 W	2659.319	11	205497.716	540759.467
START			51	205484.469	543418.753	
51	INV N	0-03-48.1 E	2624.321	55	208108.789	543421.656
55	INV N	0-03-48.1 E	2621.782	59	210730.569	543424.555
START			15	208128.529	540774.139	
15	INV S	89-34-22.1 E	2647.590	55	208108.789	543421.656
55	INV S	89-34-22.1 E	2605.418	95	208089.363	546027.001 AS

POINT-POINT ANGLES

ANGLE	51 -	11 -	15:	C.W.	270-02-02.9	C.C.W.	89-57-57.1	2630.854
ANGLE	11 -	15 -	19:	C.W.	179-31-03.3	C.C.W.	180-28-56.7	2634.134
ANGLE	15 -	19 -	59:	C.W.	270-51-16.0	C.C.W.	89-08-44.0	2658.097
ANGLE	19 -	59 -	99:	C.W.	179-13-14.4	C.C.W.	180-46-45.6	2621.102
ANGLE	59 -	99 -	95:	C.W.	270-29-30.5	C.C.W.	89-30-29.5	2645.286
ANGLE	99 -	95 -	91:	C.W.	179-39-17.5	C.C.W.	180-20-42.5	2613.428
ANGLE	95 -	91 -	51:	C.W.	270-07-43.4	C.C.W.	89-52-16.6	2605.575
ANGLE	91 -	51 -	11:	C.W.	180-05-52.0	C.C.W.	179-54-08.0	2659.319