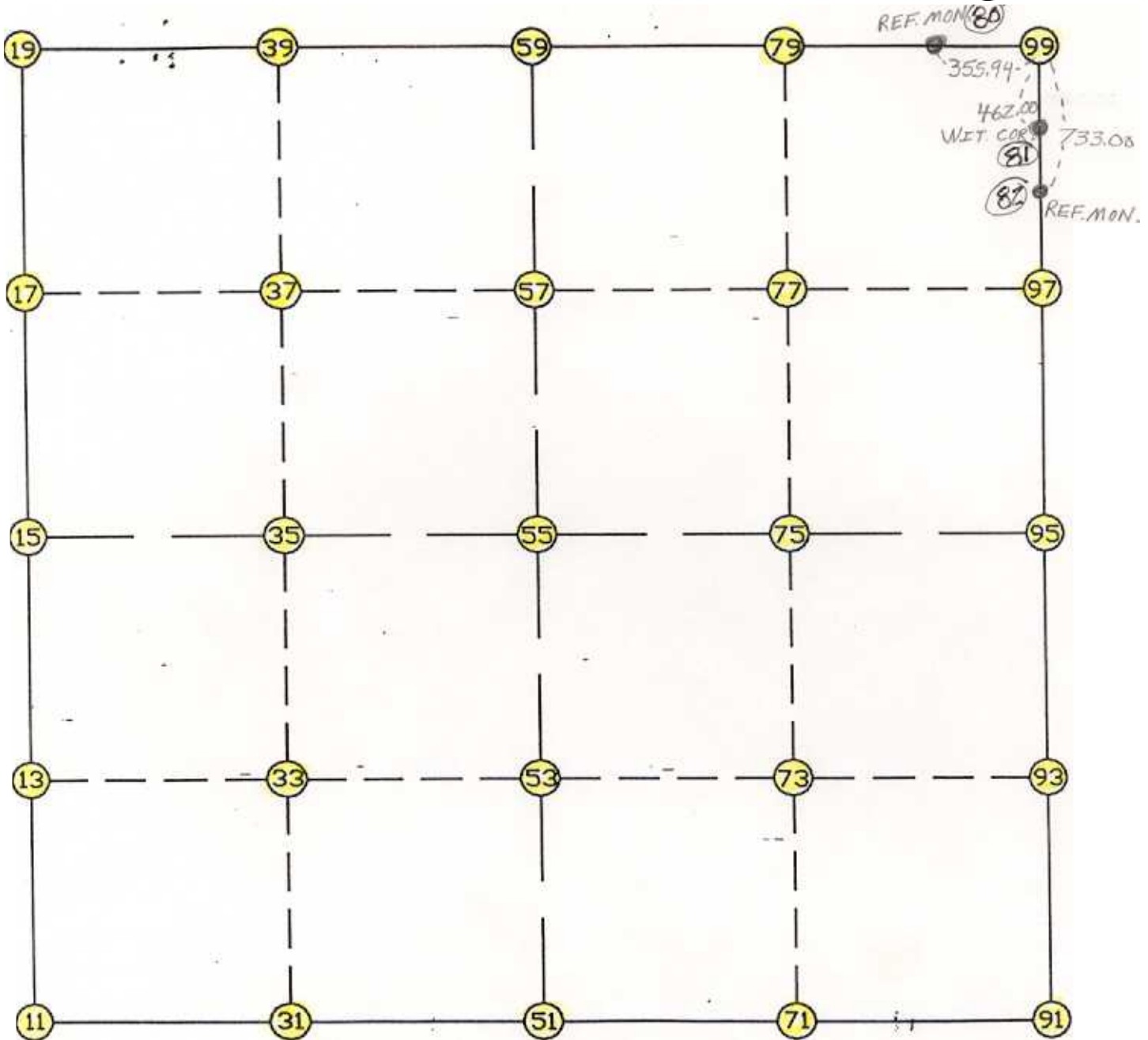


WRIGHT COUNTY SURVEYORS OFFICE

Public Works Building
Buffalo, Minn. 55313

SECTION 20 TOWNSHIP 121 RANGE 24



REMARKS

THE INFORMATION SHOWN HEREON IS A COMPILATION OF WRIGHT COUNTY RECORDS AND IS INTENDED TO BE USED FOR COMPARISON PURPOSES ONLY. THE COUNTY IS NOT RESPONSIBLE FOR ANY INACCURACIES HEREIN CONTAINED.

Coordinate File Name: SEC-20.CRD Lowest pt #: 1 Highest pt #: 99
 Job # : 95-09
 Description: COUNTY COORDINATES SECTION 20 T121 R24
 # of chars. in point descr.: 10

FROM TYPE	BEARING	DISTANCE	TO	NORTHING	EASTING
LIST POINTS					
POINT	NORTHING	EASTING	ELEVATION	DESCR	
11	205581.836636	535463.504064			
13	206886.261436	535489.987819			
15	208190.686236	535516.471574			
17	209511.389139	535521.271909			
19	210832.092041	535526.072243			
31	205561.717175	536786.749118			
33	206868.484896	536804.347052			
35	208175.252617	536821.944987			
37	209493.070054	536828.720581			
39	210810.887491	536835.496176			
51	205541.597714	538109.994172			
53	206850.708356	538118.706286			
55	208159.818998	538127.418399			
57	209474.750969	538136.169254			
59	210789.682941	538144.920109			
71	205519.656642	539434.730355			
73	206831.915278	539442.754592			
75	208144.173914	539450.778830			
77	209460.170663	539453.282466			
79	210776.167412	539455.786102			
91	205497.715570	540759.466537			
93	206813.122200	540766.802899			
95	208128.528830	540774.139260			
97	209445.590356	540770.395677			
99	210762.651883	540766.652094			

START			11	205581.837	535463.504
11	INV N	1-09-47.2 E	2609.387	15	208190.686
15	INV N	0-12-29.7 E	2641.423	19	210832.092
19	INV S	89-04-20.1 E	2619.191	59	210789.683
59	INV S	89-24-33.4 E	2621.871	99	210762.652
99	INV S	0-09-46.3 E	2634.134	95	208128.529
95	INV S	0-19-10.4 W	2630.854	91	205497.716
91	INV N	89-03-04.0 W	2649.836	51	205541.598
51	INV N	89-07-44.1 W	2646.796	11	205581.837
START			51	205541.598	538109.994
51	INV N	0-22-52.7 E	2618.279	55	208159.819
55	INV N	0-22-52.7 E	2629.922	59	210789.683
START			15	208190.686	535516.472
15	INV S	89-19-21.6 E	2611.129	55	208159.819
55	INV S	89-19-21.6 E	2646.906	95	208128.529

POINT-POINT ANGLES

ANGLE	51 -	11 -	15:	C.W.	270-17-31.3	C.C.W.	89-42-28.7	2609.387
ANGLE	11 -	15 -	19:	C.W.	179-02-42.5	C.C.W.	180-57-17.5	2641.423
ANGLE	15 -	19 -	59:	C.W.	270-43-10.2	C.C.W.	89-16-49.8	2619.191
ANGLE	19 -	59 -	99:	C.W.	179-39-46.7	C.C.W.	180-20-13.3	2621.871
ANGLE	59 -	99 -	95:	C.W.	269-14-47.1	C.C.W.	90-45-12.9	2634.134
ANGLE	99 -	95 -	91:	C.W.	180-28-56.7	C.C.W.	179-31-03.3	2630.854
ANGLE	95 -	91 -	51:	C.W.	270-37-45.6	C.C.W.	89-22-14.4	2649.836
ANGLE	91 -	51 -	11:	C.W.	179-55-20.0	C.C.W.	180-04-40.0	2646.796