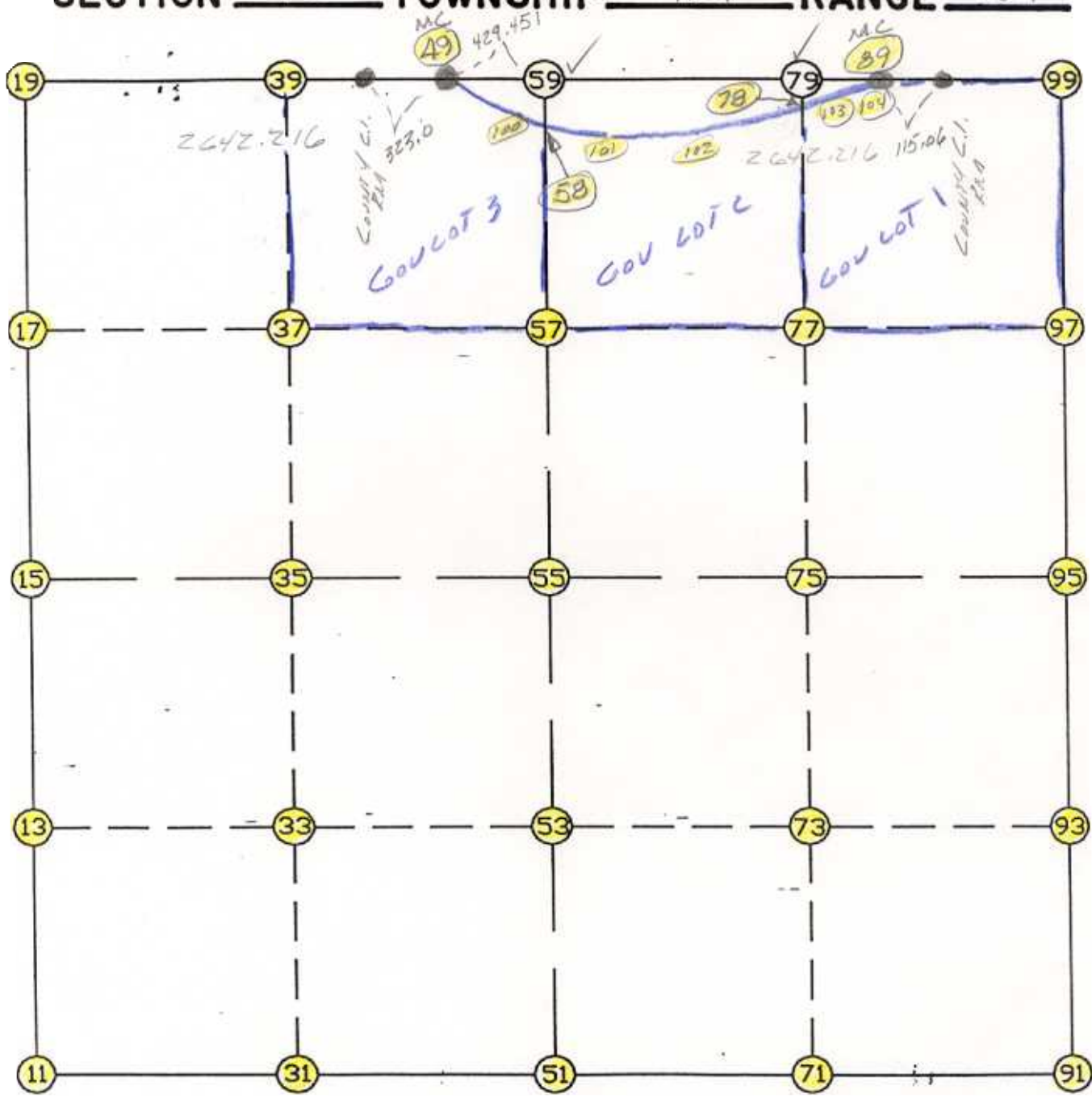


WRIGHT COUNTY SURVEYORS OFFICE

Public Works Building  
Buffalo, Minn. 55313

SECTION 16 TOWNSHIP 121 RANGE 24



REMARKS

---

---

---

THE INFORMATION SHOWN HEREON IS A COMPILATION OF WRIGHT COUNTY RECORDS AND IS INTENDED TO BE USED FOR COMPARISON PURPOSES ONLY. THE COUNTY IS NOT RESPONSIBLE FOR ANY INACCURACIES HEREIN CONTAINED.

COGO =====

Wednesday February 1, 1995

10:38 AM

Coordinate File Name: SEC-16.CRD    Lowest pt #:    1    Highest pt #:    104

Job #            : 95-09

Description: COUNTY COORDINATES SECTION 16 T121 R24

# of chars. in point descr.: 10

FROM TYPE	BEARING	DISTANCE	TO	NORTHING	EASTING
-----					
LIST POINTS					
POINT	NORTHING	EASTING	ELEVATION	DESCR	
-----					
11	210762.651883	540766.652094			
13	212073.343002	540757.884968			
15	213384.034121	540749.117841			
17	214700.077161	540759.709342			
19	216016.120200	540770.300843			
31	210746.610208	542095.603782			
33	212064.113366	542089.681497			
35	213381.616523	542083.759212			
37	214691.305212	542087.540510			
39	216000.994138	542091.321808			
49	215990.785084	542982.920361			
51	210730.568534	543424.555470			
53	212054.883730	543421.478027			
55	213379.198925	543418.400583			
57	214682.533262	543415.371895			
58	215881.788413	543412.585065			
59	215985.867598	543412.343206			
71	210732.575982	544735.105081			
73	212054.693627	544735.808300			
75	213376.811271	544736.511519			
77	214673.765590	544734.938068			
78	215783.867678	544733.591305			
79	215970.740075	544733.364594			
89	215963.932035	545327.881391			
91	210734.583431	546045.654692			
93	212054.503524	546050.138573			
95	213374.423617	546054.622454			
97	214664.997920	546054.504118			
99	215955.572223	546054.385781			
100	215918.344525	543314.448335			
101	215752.168261	543760.556914			
102	215735.444391	544358.965602			
103	215815.750328	544980.250727			
104	215954.667205	545268.983933			

START					11	210762.652	540766.652
11	INV N	0-22-59.7	W	2621.441	15	213384.034	540749.118
15	INV N	0-27-40.0	E	2632.171	19	216016.120	540770.301
19	INV S	89-20-38.3	E	2212.765	49	215990.785	542982.920
49	INV S	89-20-38.1	E	429.451	59	215985.868	543412.343
59	INV S	89-20-38.1	E	1915.664	89	215963.932	545327.881
89	INV S	89-20-26.6	E	726.552	99	215955.572	546054.386
99	INV S	0-00-18.9	E	2581.149	95	213374.424	546054.622
95	INV S	0-11-40.7	W	2639.855	91	210734.583	546045.655
91	INV S	89-54-44.1	W	2621.102	51	210730.569	543424.555
51	INV N	89-18-30.3	W	2658.097	11	210762.652	540766.652
START					51	210730.569	543424.555
51	INV N	0-07-59.3	W	2648.638	55	213379.199	543418.401
55	INV N	0-07-59.3	W	2606.676	59	215985.868	543412.343
START					15	213384.034	540749.118
15	INV S	89-53-46.4	E	2669.287	55	213379.199	543418.401
55	INV S	89-53-46.4	E	2636.226	95	213374.424	546054.622

POINT-POINT ANGLES

ANGLE	51 -	11 -	15:	C.W.	268-55-30.6	C.C.W.	91-04-29.4	2621.441
ANGLE	11 -	15 -	19:	C.W.	180-50-39.7	C.C.W.	179-09-20.3	2632.171
ANGLE	15 -	19 -	49:	C.W.	270-11-41.7	C.C.W.	89-48-18.3	2212.765
ANGLE	19 -	49 -	59:	C.W.	180-00-00.2	C.C.W.	179-59-59.8	429.451
ANGLE	49 -	59 -	89:	C.W.	180-00-00.0	C.C.W.	180-00-00.0	1915.664
ANGLE	59 -	89 -	99:	C.W.	180-00-11.4	C.C.W.	179-59-48.6	726.552
ANGLE	89 -	99 -	95:	C.W.	269-20-07.7	C.C.W.	90-39-52.3	2581.149
ANGLE	99 -	95 -	91:	C.W.	180-11-59.6	C.C.W.	179-48-00.4	2639.855
ANGLE	95 -	91 -	51:	C.W.	269-43-03.4	C.C.W.	90-16-56.6	2621.102
ANGLE	91 -	51 -	11:	C.W.	180-46-45.6	C.C.W.	179-13-14.4	2658.097

Coordinates stored

Wednesday February 1, 1995

10:39 AM