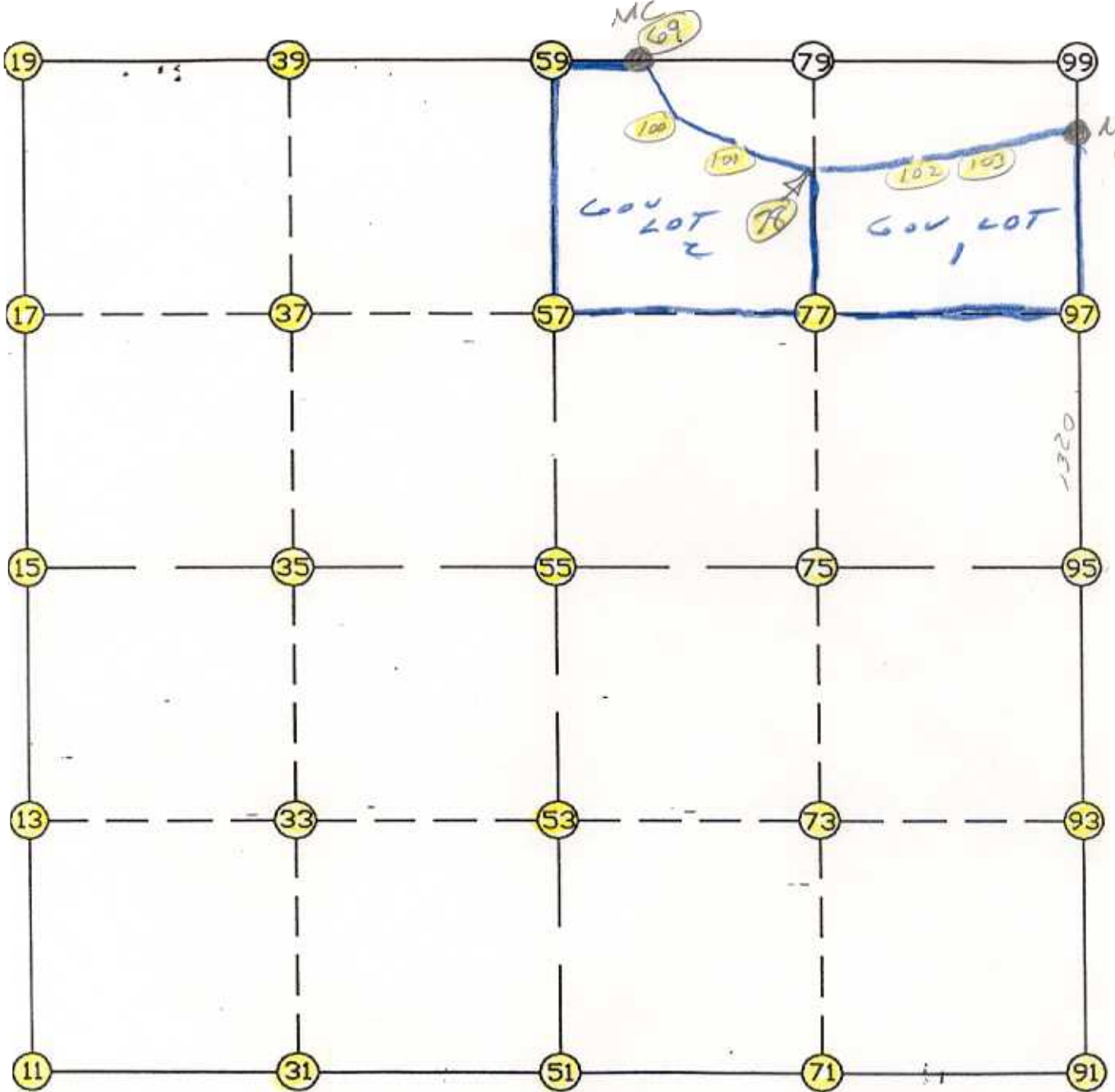


WRIGHT COUNTY SURVEYORS OFFICE

Public Works Building  
Buffalo, Minn. 55313

SECTION 14 TOWNSHIP 121 RANGE 24



REMARKS

---

---

---

THE INFORMATION SHOWN HEREON IS A COMPILATION OF WRIGHT COUNTY RECORDS AND IS INTENDED TO BE USED FOR COMPARISON PURPOSES ONLY. THE COUNTY IS NOT RESPONSIBLE FOR ANY INACCURACIES HEREIN CONTAINED.

== COGO =====

Monday January 30, 1995

10:55 AM

Coordinate File Name: SEC-14.CRD    Lowest pt #:    1    Highest pt #:    103  
Job #                    : 95-08  
Description: COUNTY COORDINATES SECTION 14 T121 R24  
# of chars. in point descr.: 10

FROM TYPE	BEARING	DISTANCE	TO	NORTHING	EASTING
-----					
LIST POINTS					
POINT	NORTHING	EASTING	ELEVATION	DESCR	
-----					
11	210719.128233	551316.812262			
13	212029.376951	551322.974343			
15	213339.625668	551329.136423			
17	214653.830024	551334.930372			
19	215968.034380	551340.724320			
31	210727.477868	552624.766805			
33	212041.196572	552630.085740			
35	213354.915275	552635.404675			
37	214659.484009	552640.501732			
39	215964.052743	552645.598788			
51	210735.827503	553932.721348			
53	212053.016193	553937.197137			
55	213370.204882	553941.672926			
57	214665.137994	553946.073092			
59	215960.071105	553950.473257			
69	215959.517286	554131.972412			
71	210749.247088	555238.846280			
73	212067.347343	555241.390673			
75	213385.447599	555243.935065			
77	214692.785802	555233.119435			
78	215702.998496	555224.761930			
91	210762.666672	556544.971211			
93	212081.678494	556545.584208			
95	213400.690315	556546.197204			
97	214720.433610	556520.165779			
98	215793.524882	556498.999470			
100	215786.096513	554543.562501			
101	215707.951223	554952.525373			
102	215691.379421	555863.427724			
103	215780.842347	556409.323903			

START					11	210719.128	551316.812
11	INV N	0-16-10.1	E	2620.526	15	213339.626	551329.136
15	INV N	0-15-09.4	E	2628.434	19	215968.034	551340.724
19	INV S	89-49-30.6	E	2609.761	59	215960.071	553950.473
59	INV S	89-49-30.6	E	181.500	69	215959.517	554131.972
69	INV S	85-59-18.9	E	2372.840	98	215793.525	556498.999
98	INV S	1-07-48.0	E	2393.300	95	213400.690	556546.197
95	INV S	0-01-35.9	W	2638.024	91	210762.667	556544.971
91	INV S	89-24-40.8	W	2612.388	51	210735.828	553932.721
51	INV S	89-38-03.3	W	2615.962	11	210719.128	551316.812
START					51	210735.828	553932.721
51	INV N	0-11-40.9	E	2634.393	55	213370.205	553941.673
55	INV N	0-11-40.9	E	2589.881	59	215960.071	553950.473
START					15	213339.626	551329.136
15	INV N	89-19-45.8	E	2612.715	55	213370.205	553941.673
55	INV N	89-19-45.8	E	2604.703	95	213400.690	556546.197

POINT-POINT ANGLES

ANGLE	51 -	11 -	15:	C.W.	270-38-06.8	C.C.W.	89-21-53.2	2620.526
ANGLE	11 -	15 -	19:	C.W.	179-58-59.3	C.C.W.	180-01-00.7	2628.434
ANGLE	15 -	19 -	59:	C.W.	269-55-20.0	C.C.W.	90-04-40.0	2609.761
ANGLE	19 -	59 -	69:	C.W.	180-00-00.0	C.C.W.	180-00-00.0	181.500
ANGLE	59 -	69 -	98:	C.W.	183-50-11.7	C.C.W.	176-09-48.3	2372.840
ANGLE	69 -	98 -	95:	C.W.	264-51-31.0	C.C.W.	95-08-29.0	2393.300
ANGLE	98 -	95 -	91:	C.W.	181-09-23.8	C.C.W.	178-50-36.2	2638.024
ANGLE	95 -	91 -	51:	C.W.	269-23-05.0	C.C.W.	90-36-55.0	2612.388
ANGLE	91 -	51 -	11:	C.W.	180-13-22.4	C.C.W.	179-46-37.6	2615.962

Coordinates stored

Monday January 30, 1995

10:56 AM